

# Radici

PREVIEW  
VERSION  
LIMITED  
DESIGNS



**STELLINI**  
Italian Style In Ticking Since 1947

**CT NASSAU**  
Tape, Woven and Knit Ticking



# STELLINI

Italian Style In Ticking Since 1947

# CT<sup>®</sup> NASSAU

Tape, Woven and Knit Ticking

Copyright - @Stellinigroup 2026 All rights reserved.  
No part of this document may be reproduced  
without prior written permission.

WELCOME TO

Radici

PREVIEW  
VERSION  
LIMITED  
DESIGNS


COLLECTION

# Rooted in Nature, Designed for Tomorrow

Radici opens a new chapter for 2026 with an authentic return to its roots. A collection inspired by the regenerating power of nature, designed to transform domestic spaces into small oases of tranquility and well-being.

Dedicated to fabrics for mattresses, bed bases, and upholstered furniture, the collection stands out for its clean lines and delicate color palette, where technical innovation and comfort come together in a harmonious and timeless balance.





**Inspired by biophilic design, Radici brings an “outdoor” look indoors, transforming living spaces into havens of well-being with floral motifs, abstract compositions, and refined geometries.**

**The home becomes an oasis of peace, a safe and rejuvenating place amid the chaos of everyday life, where harmony and sensory balance reign supreme.**

At the heart of the collection lies an **exploration of tactility and texture**. Nature-inspired motifs are reinterpreted in a contemporary key.

The **color palette** has its roots in the natural world, with neutral shades such as ecru, beige, and light blue, capable of creating relaxing and elegant environments.

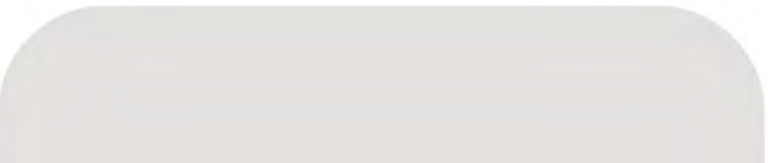
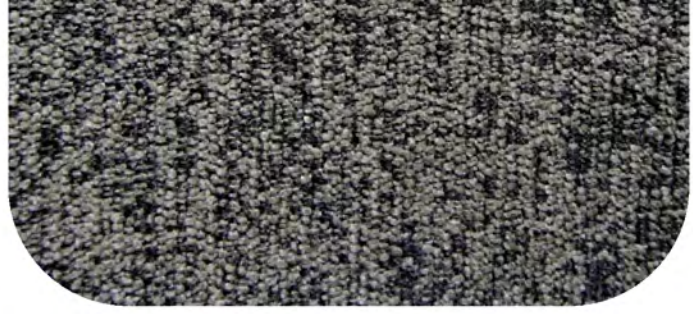
Soft knitted fabrics with puffy, three-dimensional effects invite touch, while jacquard fabrics reveal a renewed identity: clean, minimal, and sophisticated.

Alongside mattress fabrics, the collection is enriched with a new palette of **bouclé fabrics** dedicated to **bed bases**. The possibility of combining different materials and textures allows you to create an exclusive total look, in which the contrast of materials contributes to a rich but measured aesthetic, perfectly in tune with the concept of casual comfort.

With new **technical fabrics** in bioceramics and thermoregulators, Radici supports a lifestyle that values comfort, technology, and well-being. Designed to engage the senses and promote a healthier lifestyle, the collection embodies a new vision of the home: welcoming, conscious, and deeply connected to nature.

# Radici

COLLECTION





PREVIEW





# Coordinated Look: Panel+Border

Coordinated Ready-made Styles

# Collection Palette



Bianco ottico	Sabbia ita	Ecrú

150 DEN - KPE150T			
Cielo	Nebbia	Silver 2098	Grigio chiaro
Guscio	Deserto	Taupe	Rattan

Dust	Cipria

Verde scuro	Grigio 3028	Grafite	Nero

SHINY - KPES150PL			
Bianco 2000	Lucido	Ciment	Grigio
Sahara	Conchiglia	Frumento	Maldive



MATRESS PANEL - ML10735  
stile17-4-6



BORDER - Dj24894  
fasciae130h25-36-5



MATRESS PANEL - ML10864  
stile230-3-6



BORDER - Dj24925  
fasciael130h25-37-6



MATRESS PANEL - Ma10917  
pes500h230-24-6



BORDER - Dj24926  
fasciael130h25-38-6





MATRESS PANEL - Me10847  
ewkmpecv270h230 - 9-7



BORDER - Dj24900  
fasciael314h25 - 18-5



MATRESS PANEL - MI10819  
stile230 - 1-7



BORDER - Dj24904  
fasciael314h25 - 19-5

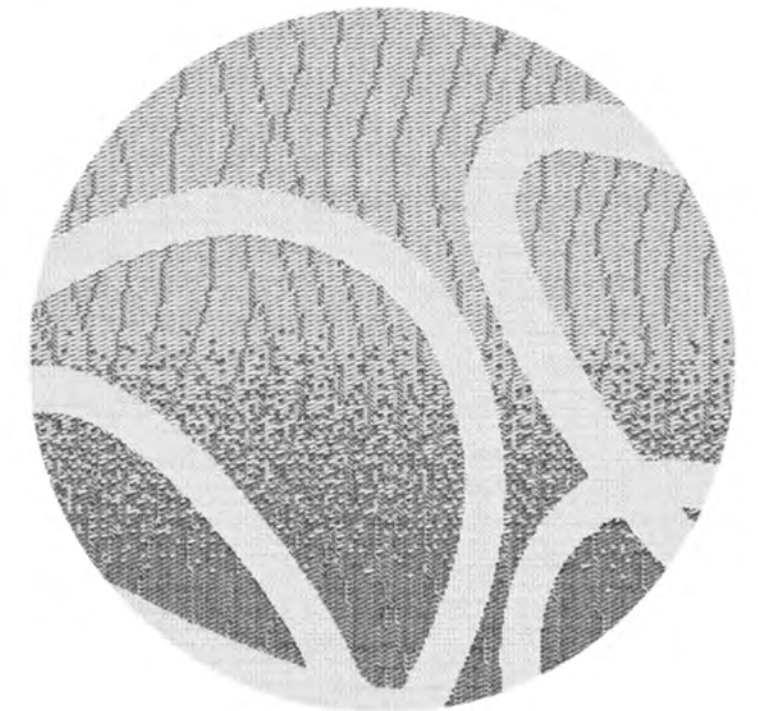




MATRESS PANEL - MI10860  
stile230 - 2-6



BORDER - DJ24907  
fasciael314h25 - 20-6



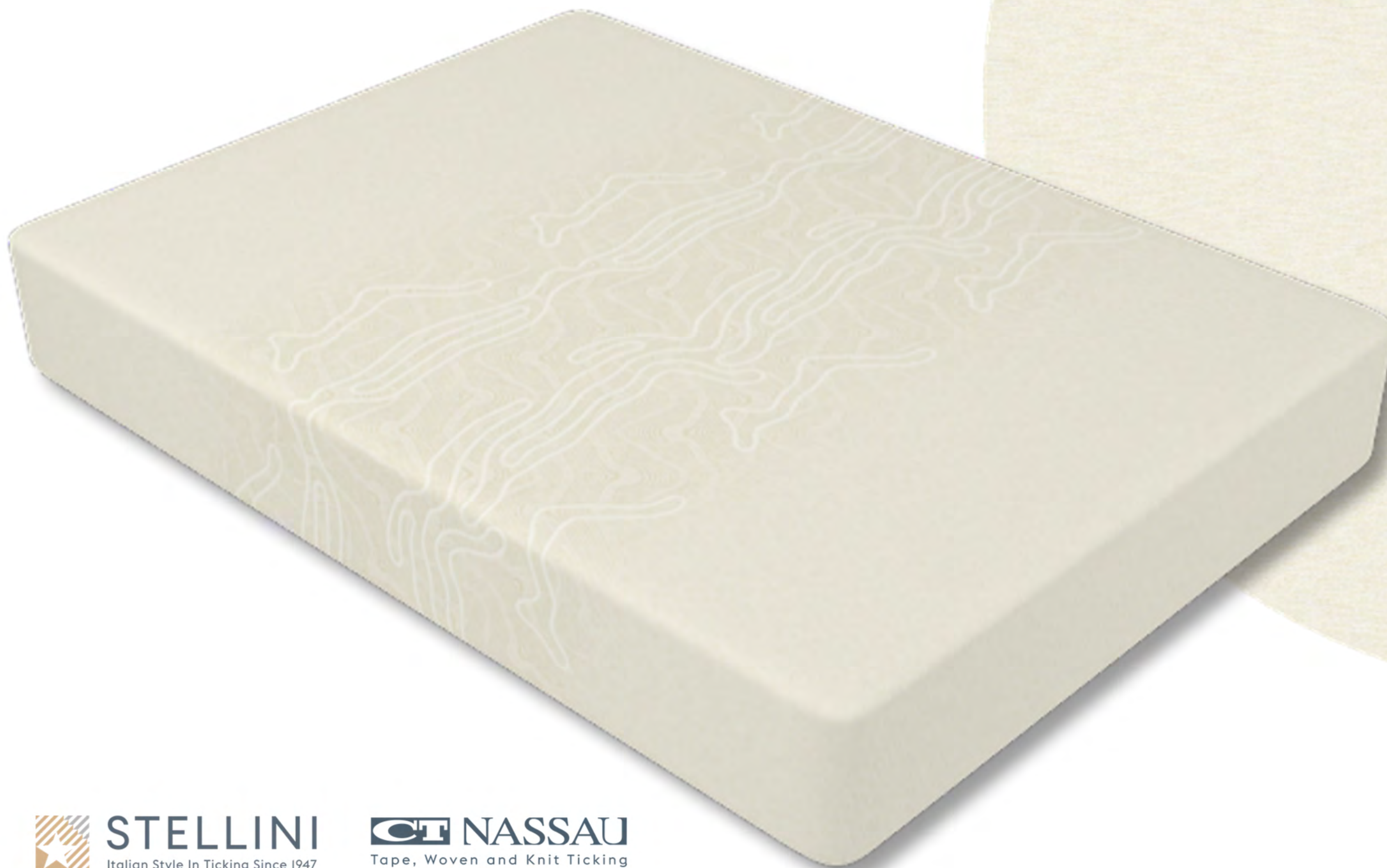


# Jacquard fabrics

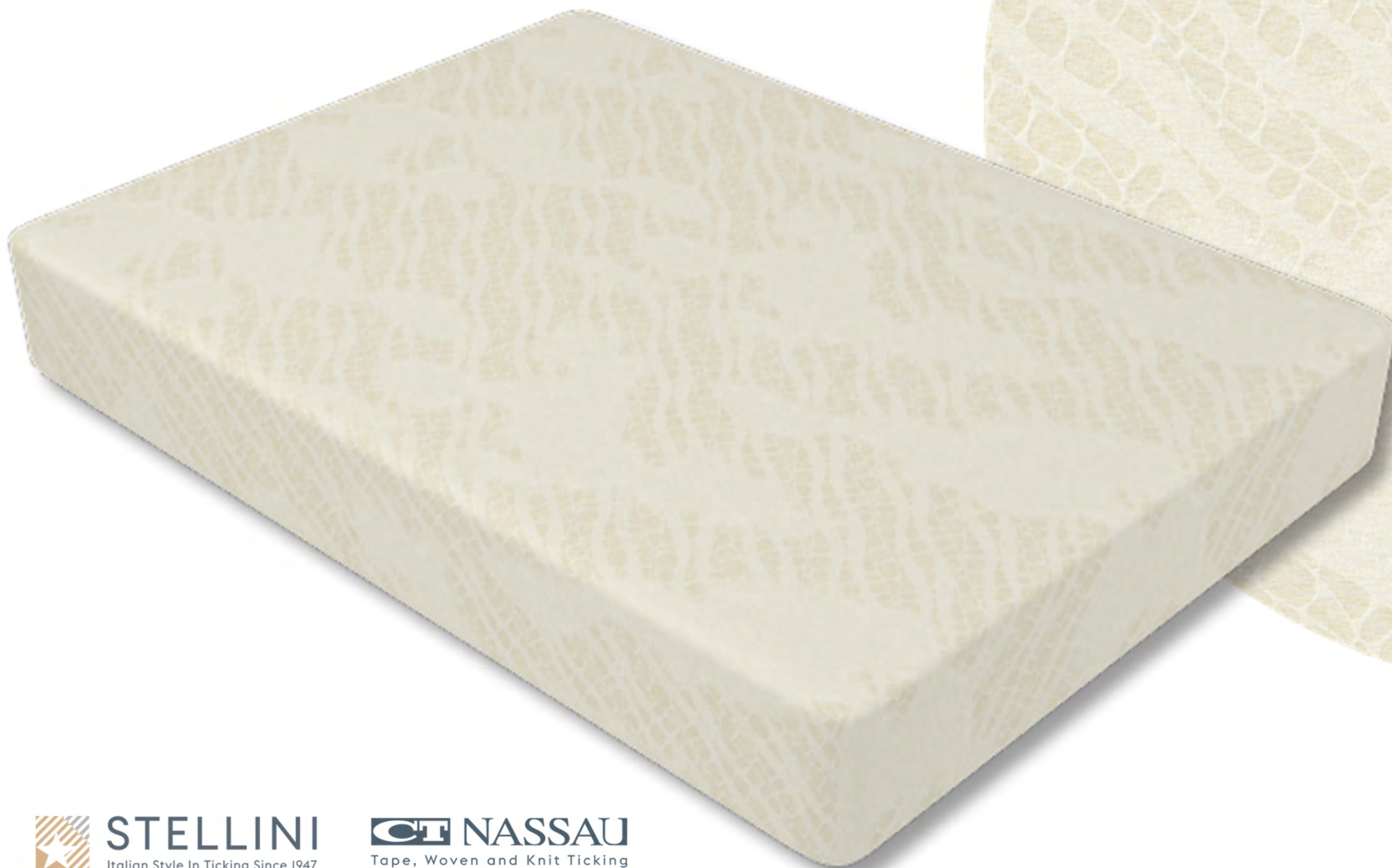
Mattress panels

MATRESS PANEL - Dj24939

p4997 - 10-0



MATRESS PANEL - Dj24958  
p4997 - 11-0



MATRESS PANEL - Dj24942  
p6408 - 9-5



MATRESS PANEL - Dg24964  
p5638dg-9-0





MATRESS PANEL - p5638dg-9-0



# Knitted Fabrics

Low weight knitted mattress panels

MATRESS PANEL - MI10820  
stile21 - 7-7



 **STELLINI**  
Italian Style In Ticking Since 1947

 **NASSAU**  
Tape, Woven and Knit Ticking

ALSO  
AVAILABLE IN:



7-6



STILE20  
12-0

MATRESS PANEL - ML10848  
stile188-4-7



 **STELLINI**  
Italian Style In Ticking Since 1947

 **NASSAU**  
Tape, Woven and Knit Ticking

ALSO  
AVAILABLE IN:



4-4



4-6

MATRESS PANEL - ML10832

Stile188-3-4



ALSO  
AVAILABLE IN:



3-6



3-7

MATRESS PANEL - MI10860  
stile230 - 2-8



 **STELLINI**  
Italian Style In Ticking Since 1947

 **NASSAU**  
Tape, Woven and Knit Ticking

ALSO  
AVAILABLE IN:



MATRESS PANEL - Ma10901  
stile184-2-5



 **STELLINI**  
Italian Style In Ticking Since 1947

 **NASSAU**  
Tape, Woven and Knit Ticking

ALSO  
AVAILABLE IN:

  
2-6

MATRESS PANEL - ML10915  
stile184 - 3-6



 **STELLINI**  
Italian Style In Ticking Since 1947

 **NASSAU**  
Tape, Woven and Knit Ticking

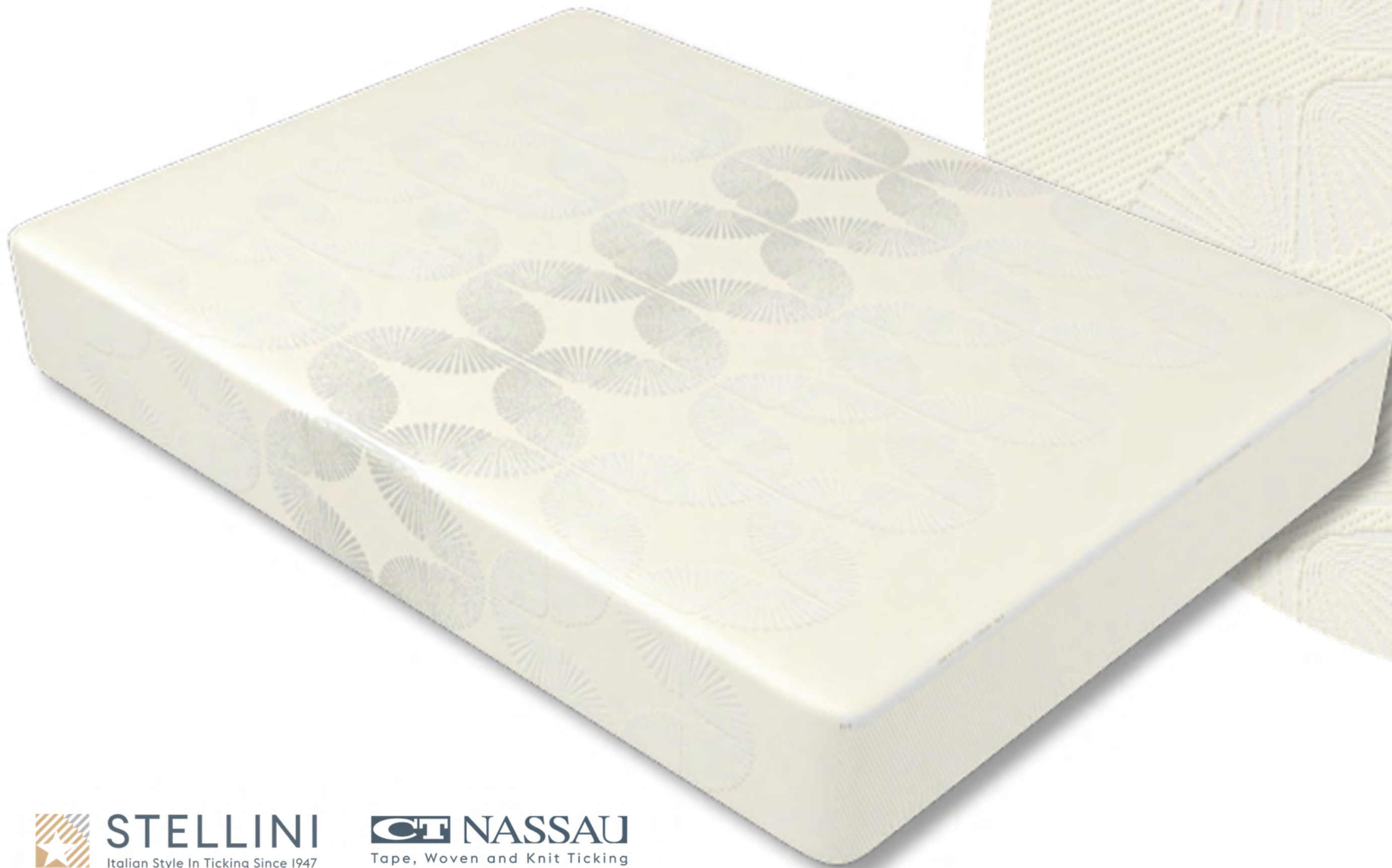
ALSO  
AVAILABLE IN:



3-5

MATRESS PANEL - ML10902

stile17 - 10-1



**STELLINI**  
Italian Style In Ticking Since 1947



**NASSAU**  
Tape, Woven and Knit Ticking

[stellinigroup.com](http://stellinigroup.com)

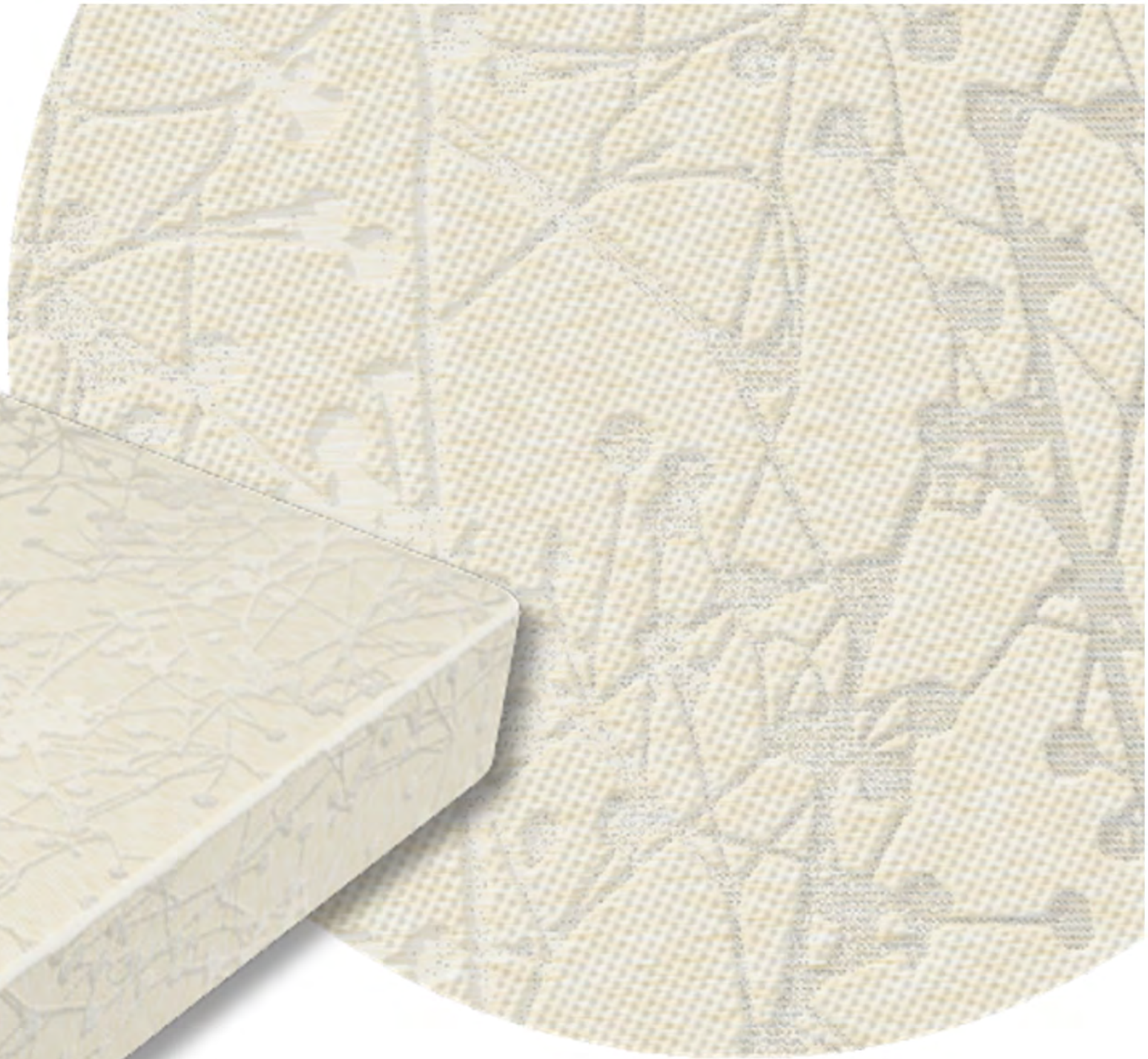
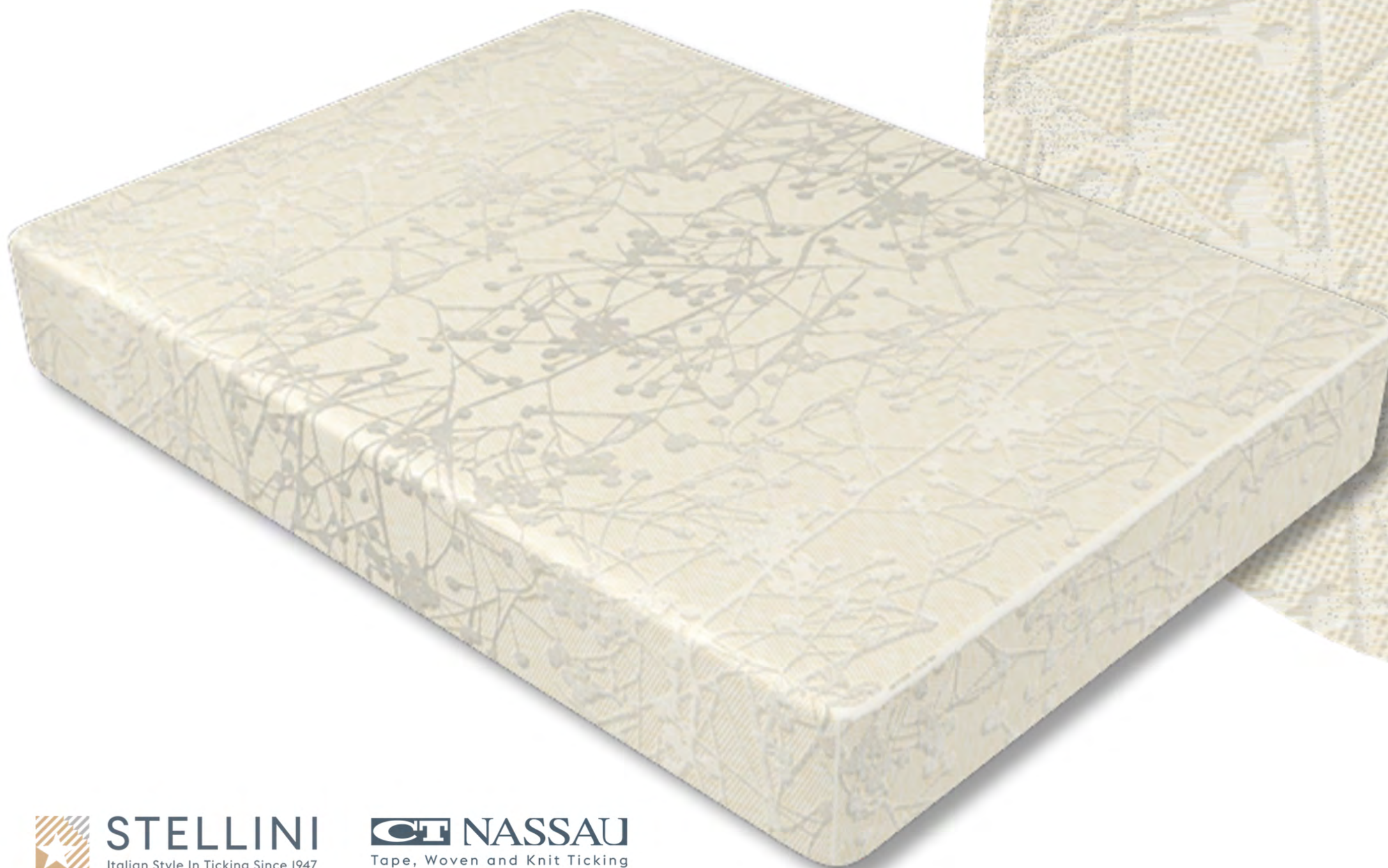
[ctnassau.com](http://ctnassau.com)



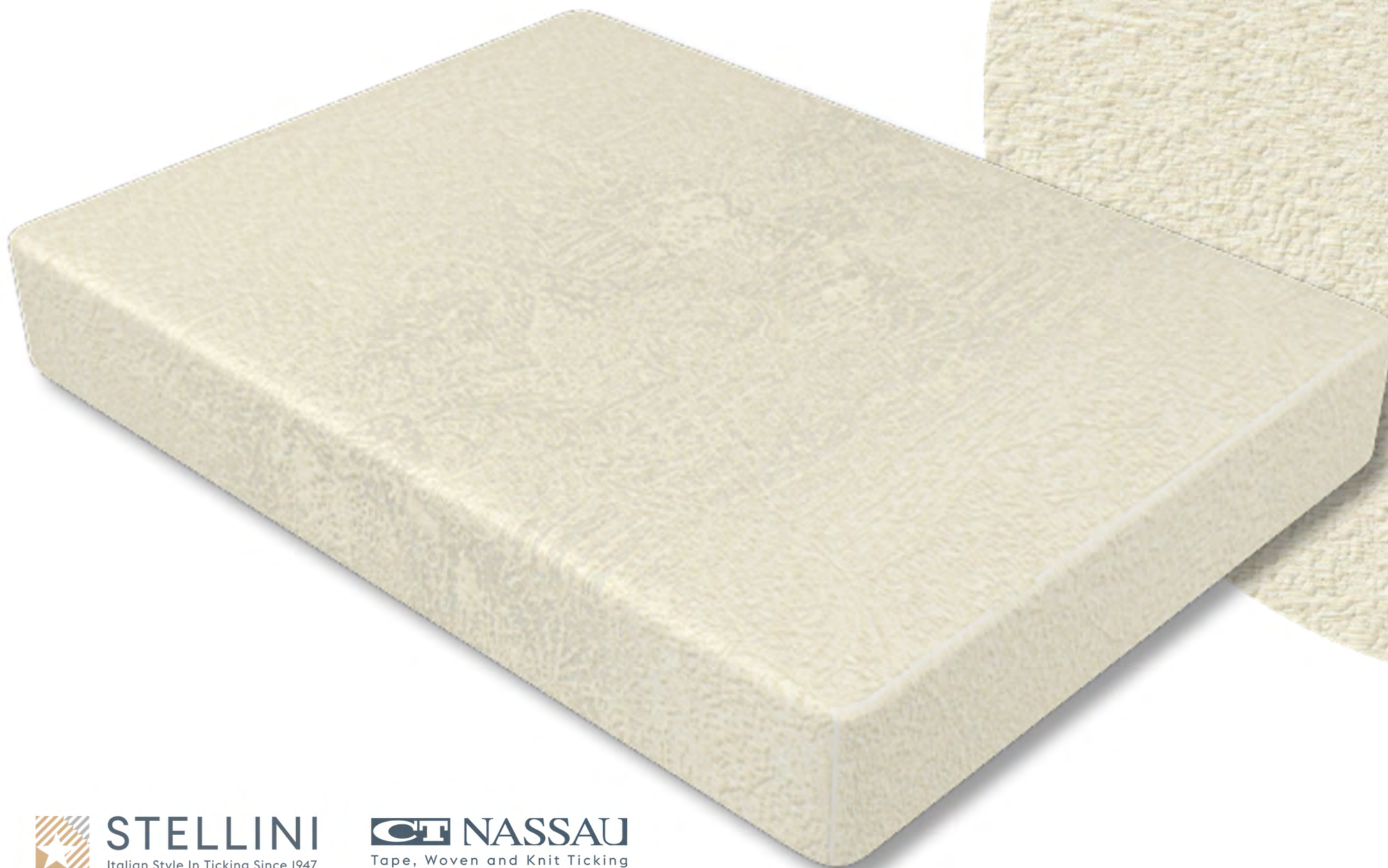
# Naturals

Vyscose linen mattress panels

MATRESS PANEL - Ma10927  
pvl240b230 - 26-6



MATRESS PANEL - Ma10940  
pvl240b230 - 27-6





# Heavy Knitted fabrics

500 grams Knitted Mattress panels



MATRESS PANEL - pes500h230 - 23-50

MATRESS PANEL - MA10913

pes500h230 - 23-5



 **STELLINI**  
Italian Style In Ticking Since 1947

 **NASSAU**  
Tape, Woven and Knit Ticking

ALSO  
AVAILABLE IN:

-  23-6
-  23-50
-  23-61



# Double Jerseys

High definition knitted designs

MATRESS PANEL - Me10856  
ewkmpecv270h230 - 11-7

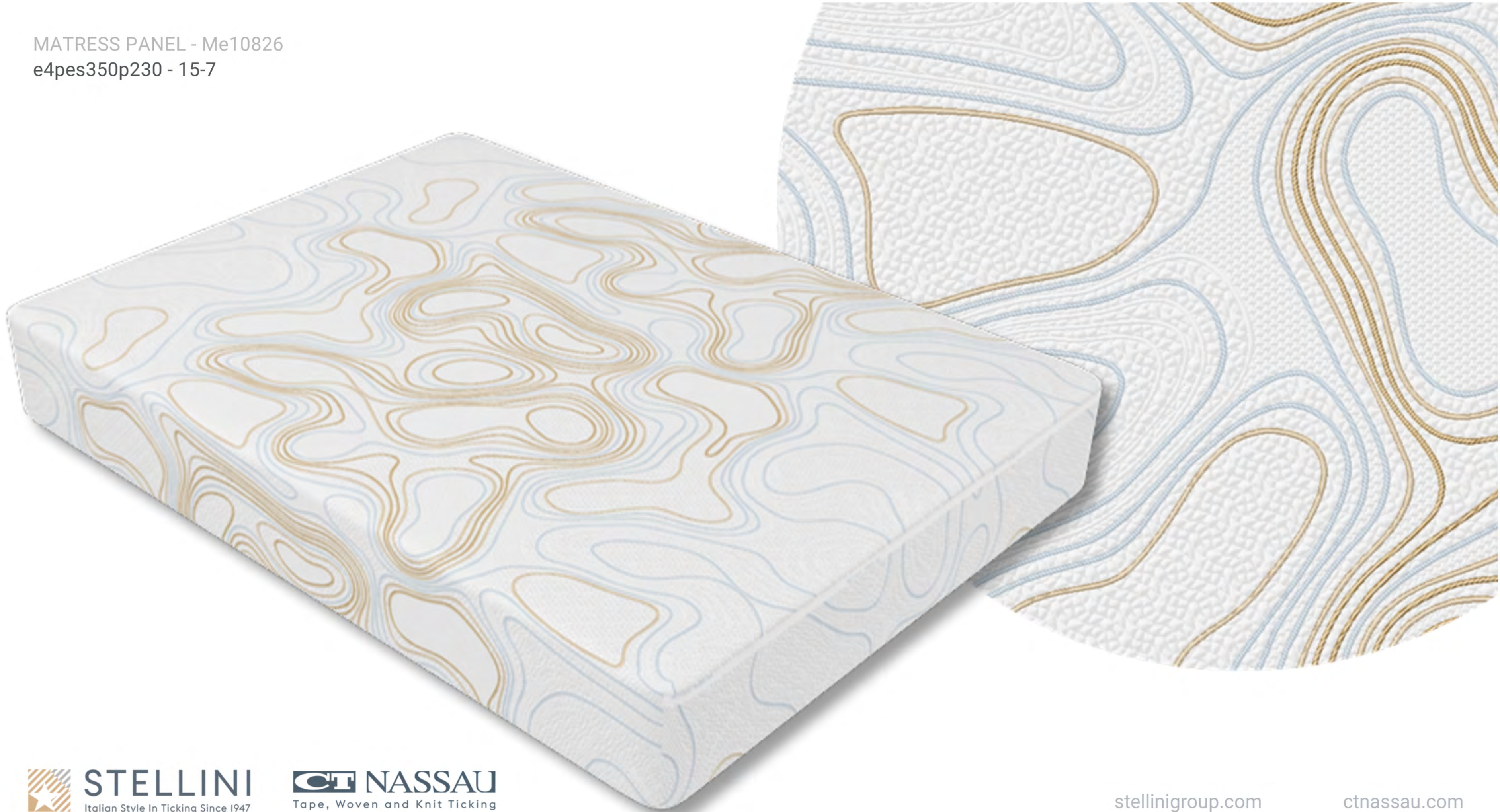


ALSO  
AVAILABLE IN:

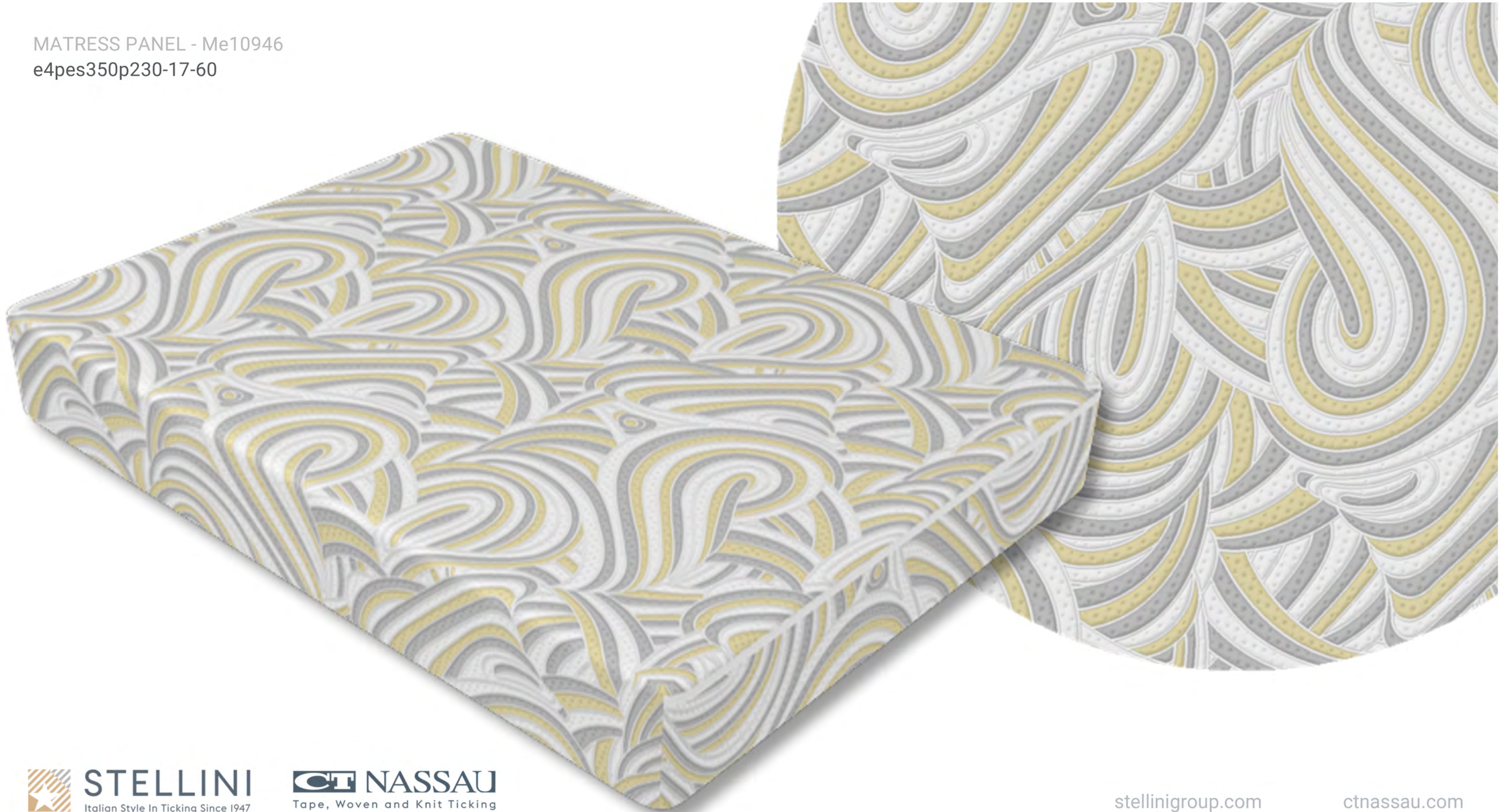


11-6

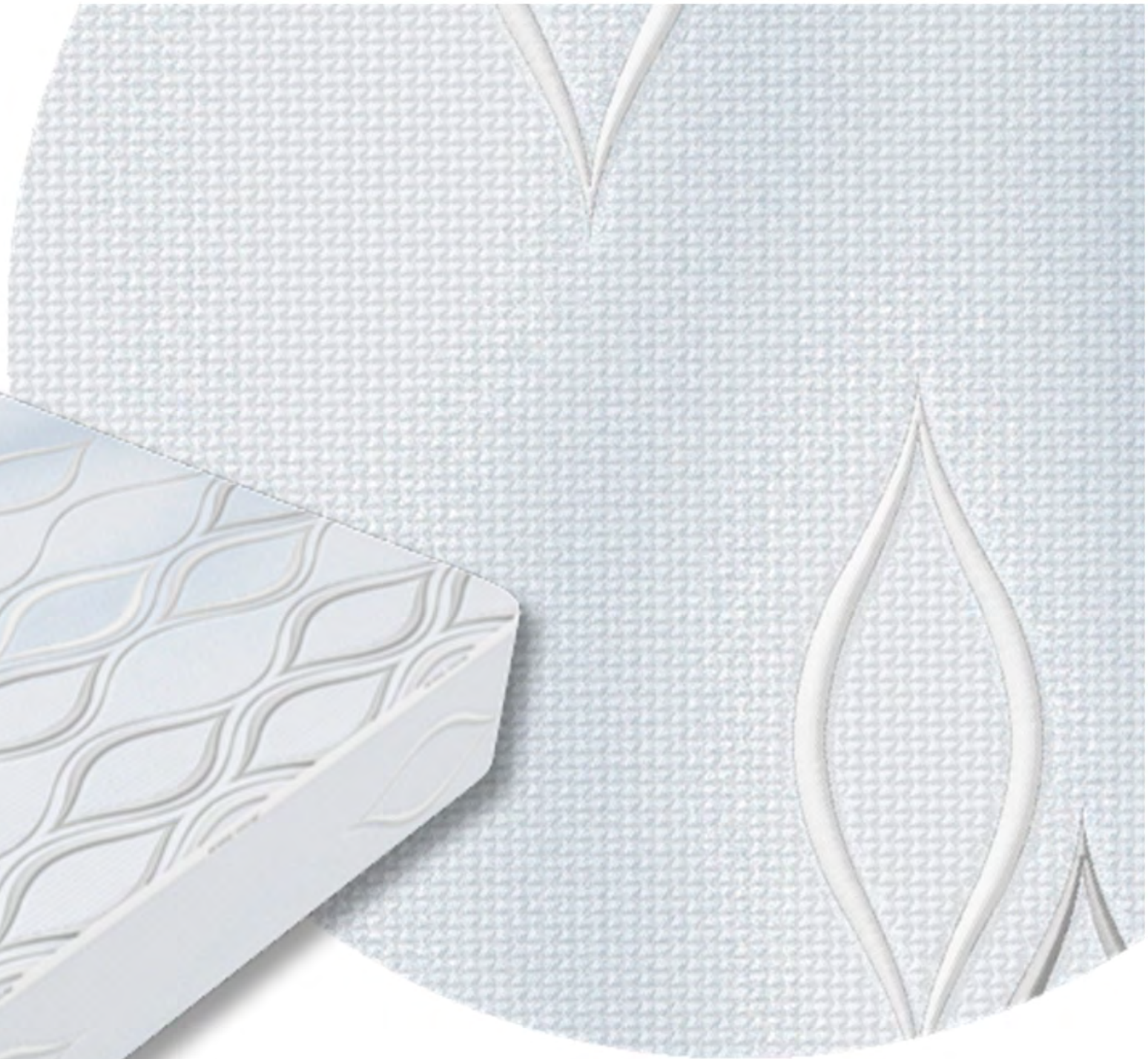
MATRESS PANEL - Me10826  
e4pes350p230 - 15-7

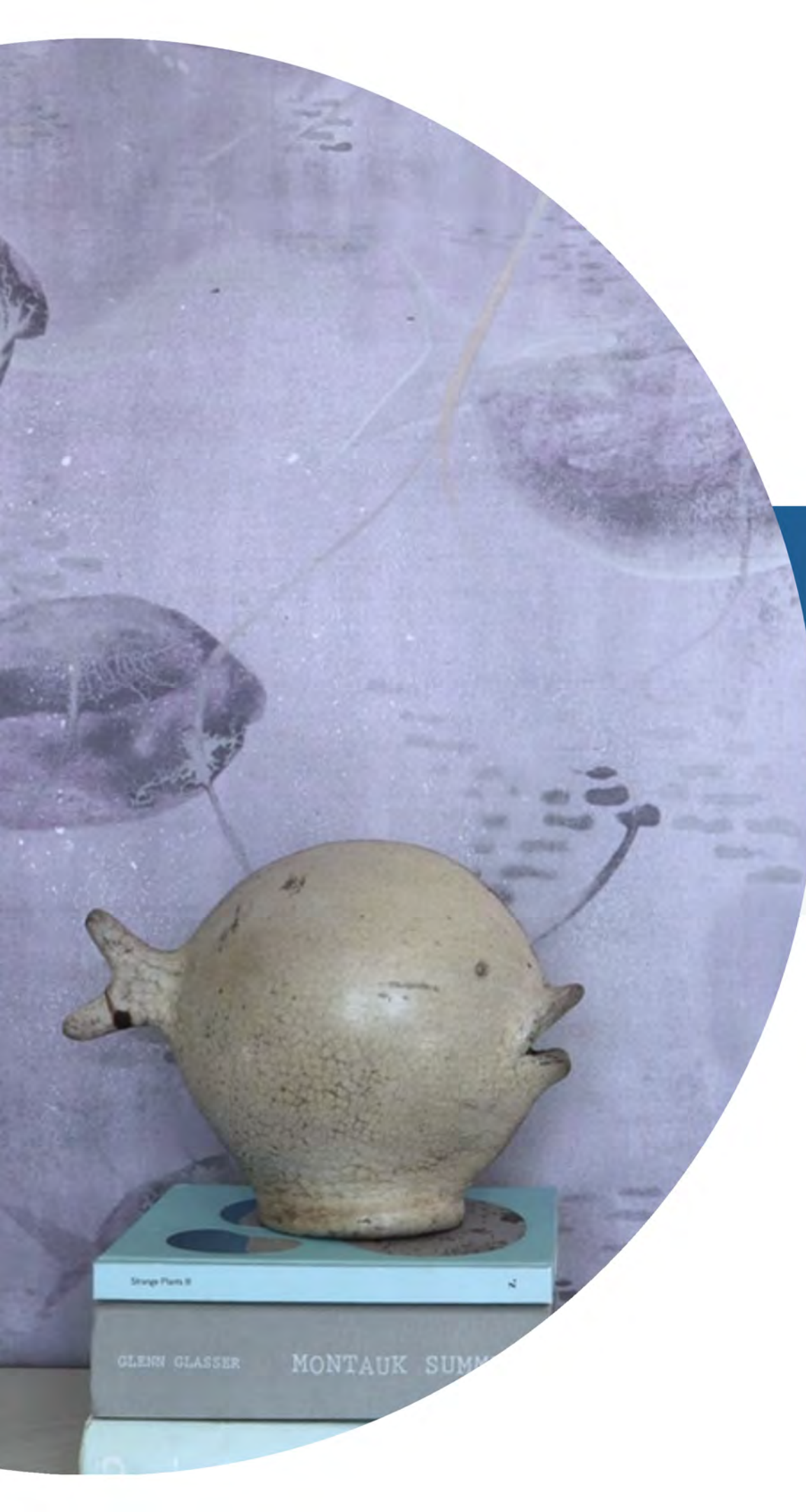


MATRESS PANEL - Me10946  
e4pes350p230-17-60



MATRESS PANEL - Me10945  
e4pes350p230 - 16-6

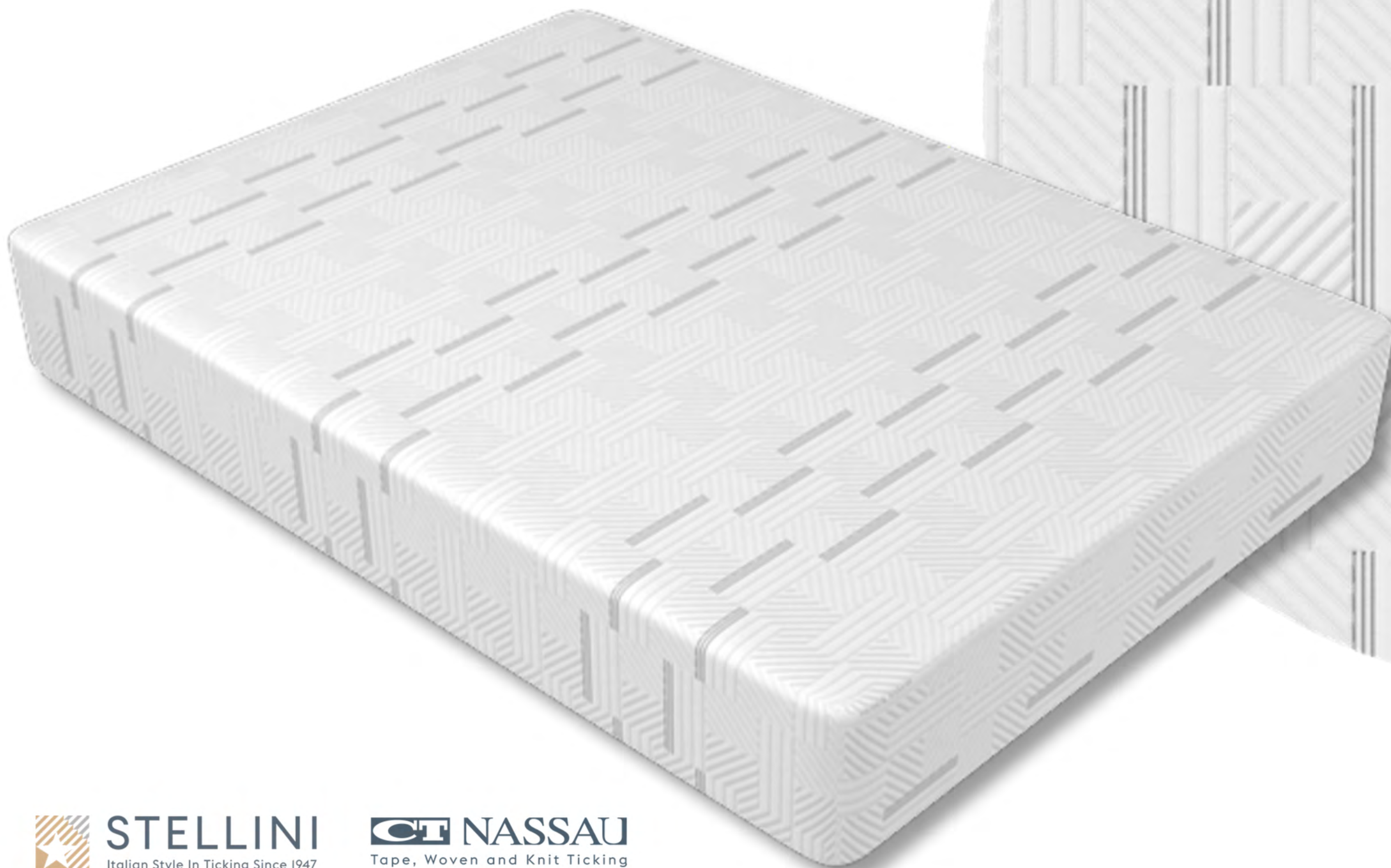




# Cooling fabrics

Mattress panels

MATRESS PANEL - Ma10870  
tempel350h230 - 4-6



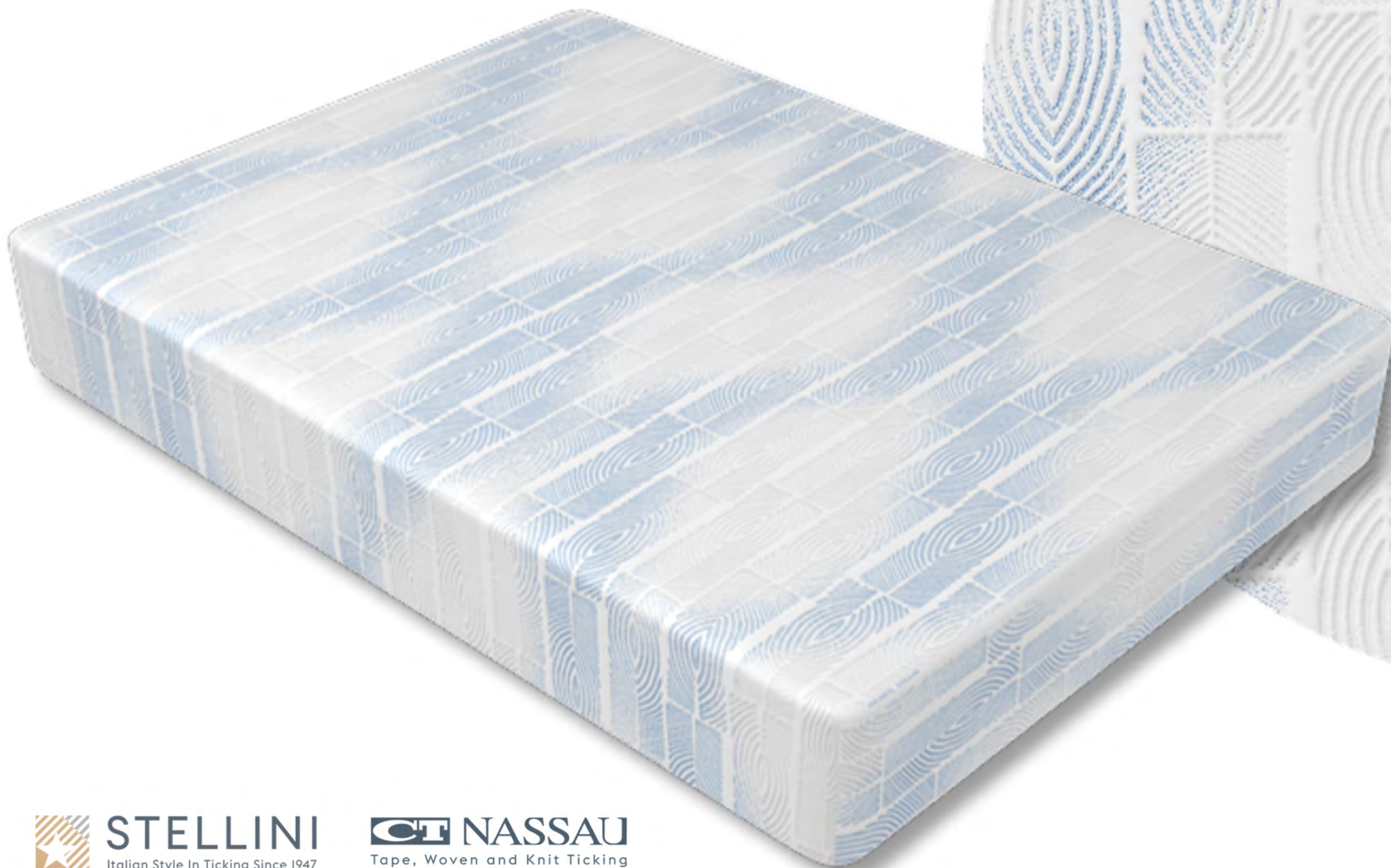
 **STELLINI**  
Italian Style In Ticking Since 1947

 **NASSAU**  
Tape, Woven and Knit Ticking

ALSO  
AVAILABLE IN:

  
4-1

MATRESS PANEL - Ma10871  
tempel350h230 - 5-1



 **STELLINI**  
Italian Style In Ticking Since 1947

 **NASSAU**  
Tape, Woven and Knit Ticking

ALSO  
AVAILABLE IN:

  
5-6

# Sommiers

Contact us to explore our full collection of jacquard sommiers

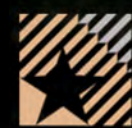


# Radici

COLLECTION



[stellinigroup.com/radici-collection/](https://stellinigroup.com/radici-collection/)



**STELLINI**  
Italian Style In Ticking Since 1947



[ctnassau.com/radici-collection/](https://ctnassau.com/radici-collection/)

**CT NASSAU**  
Tape, Woven and Knit Ticking

# CONTACT US TO DISCOVER THE FULL CATALOGUE

[communication@stellinigroup.com](mailto:communication@stellinigroup.com)

Europe | Italy  
Stellini Textile  
T +39 0331 072501  
[info@stellinigroup.com](mailto:info@stellinigroup.com)  
[stellinigroup.com](http://stellinigroup.com)

USA  
Continental Ticking Corporation of America  
T +1 336 570 0091  
[salesmgt@ctnassau.com](mailto:salesmgt@ctnassau.com)  
[ctnassau.com](http://ctnassau.com)

Russia  
Stellini.RU  
Outside RU: T +7 4932 57 48 24  
Inside RU: T 8 800 550 19 47  
[infoweb@stellinigroup.ru](mailto:infoweb@stellinigroup.ru)  
[stellinigroup.ru](http://stellinigroup.ru)