

# Miraggio

COLLECTION



**STELLINI**  
Italian Style In Ticking Since 1947



**NASSAU**

Tape, Woven and Knit Ticking



BENVENUTI A

# Miraggio

COLLECTION

[stellinigroup.com](http://stellinigroup.com)

Copyright - ©Stellinigroup 2025  
tutti i diritti riservati. nessuna parte di  
questo documento dev'essere riprodotta  
senza previo permesso scritto.

# Un Miraggio nell'Oasi di Relax

Con Miraggio, Stellini Group svela il primo capitolo della sua visionaria collezione 2025, Oasi: un universo di tessuti curato nei minimi dettagli che ci invita a riscoprire comfort, serenità e immaginazione.

Ispirandosi al concetto di oasi come santuario di Calma e Relax, Miraggio esplora nuove frontiere nella biancheria da letto e nei tessuti d'arredamento, dove tecnologia ed estetica convergono per ridefinire l'essenza stessa del riposo.

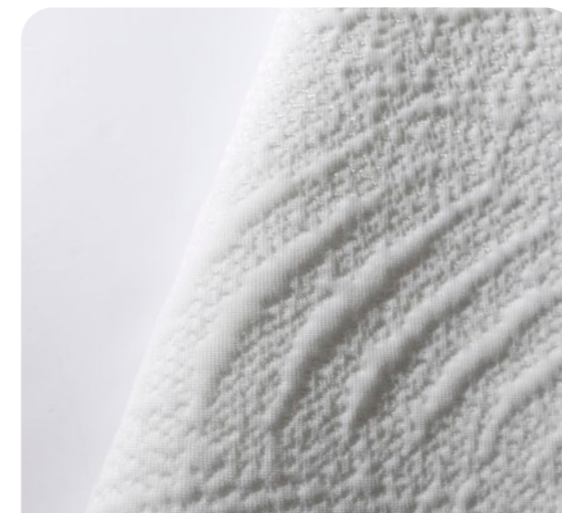
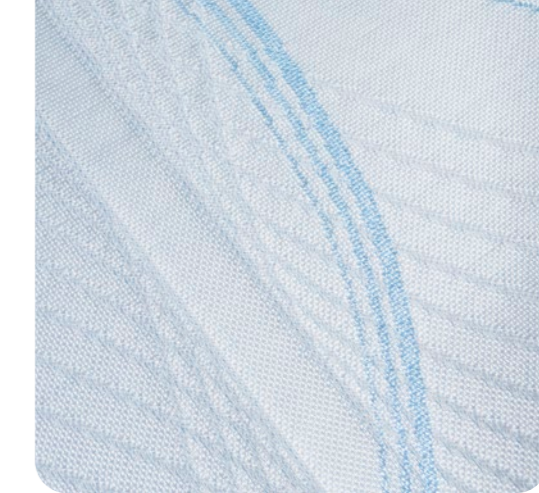
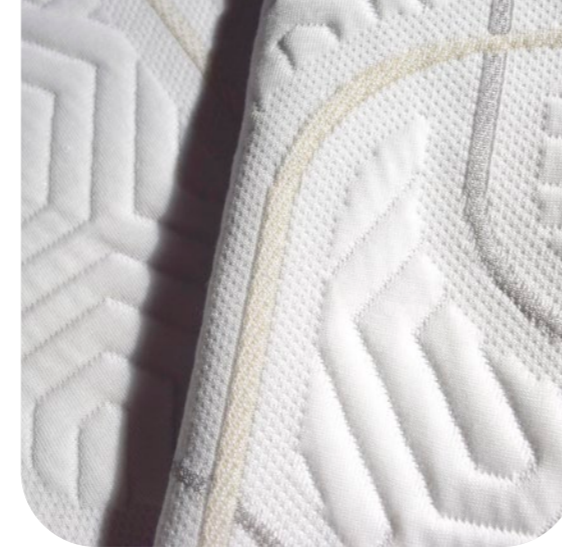


*Ispirata a paesaggi onirici, dai miraggi nei vasti deserti ai confini surreali dei mondi fantascientifici, Miraggio abbraccia il dualismo tra illusione e sostanza. La collezione gioca con astrazioni geometriche, texture organiche e toni colore rilassanti – bianco, beige e azzurro – per evocare il reale e l'immaginario.*

Soffici maglie, jacquard di alta gamma, fasce per materassi e tessuti per basi letto sono i protagonisti di una collezione che osa con nuove costruzioni tecniche, dal bouclè ad effetti di colore e rilievi, mentre l'utilizzo di materiali riciclati e naturali prosegue l'impegno di Stellini per l'innovazione sostenibile.

La funzionalità incontra la visione con caratteristiche prestazionali avanzate: tessuti rinfrescanti, tecnici, naturali e molto altro - progettati per letti e mobili imbottiti di alta gamma, capaci di infondere il perfetto sonno ristoratore.

PREVIEW



Miraggio  
COLLECTION



# Selezione Colori

## Rappresentativi



## Lucidi



## Tonalità



# Anteprime Design



Alcuni colori delle simulazioni, profondità del design e dettagli possono variare rispetto al tessuto originale. Contattateci per maggiori informazioni.



# Fasce Jacquard

Fasce per materassi in tessuto jacquard  
con combinazioni geometriche, astratte e mix di effetti



MATRESS PANEL - Dg24611  
p6066dg - 14-5

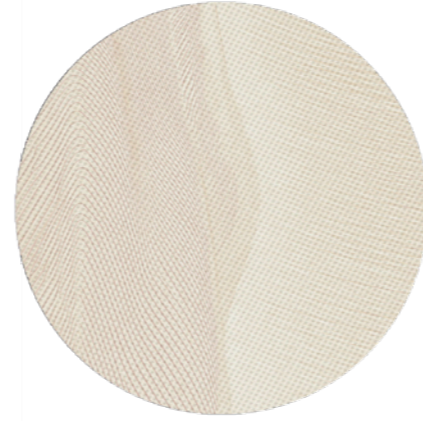


BORDER - Dj24660  
fasciaeI90h25 - 8-5

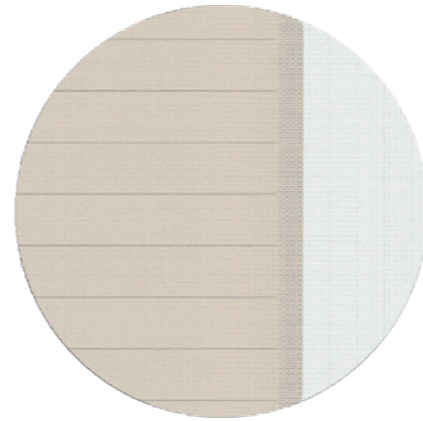




MATRESS PANEL - Me10624  
e4rctnvl500d230 - 1-61



BORDER - Cj24629A  
fascel1027h25-1-4



ctnassau.com

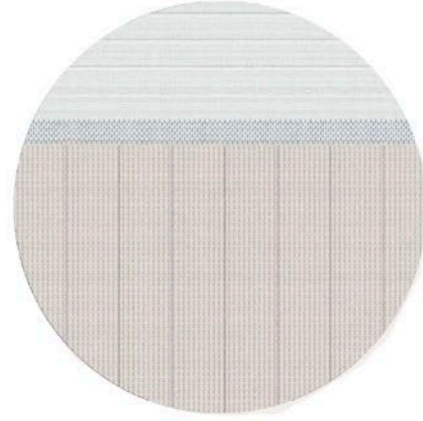
stellinigroup.com



MATRESS PANEL - Me10618  
e3tmpvl400b230 - 1-6

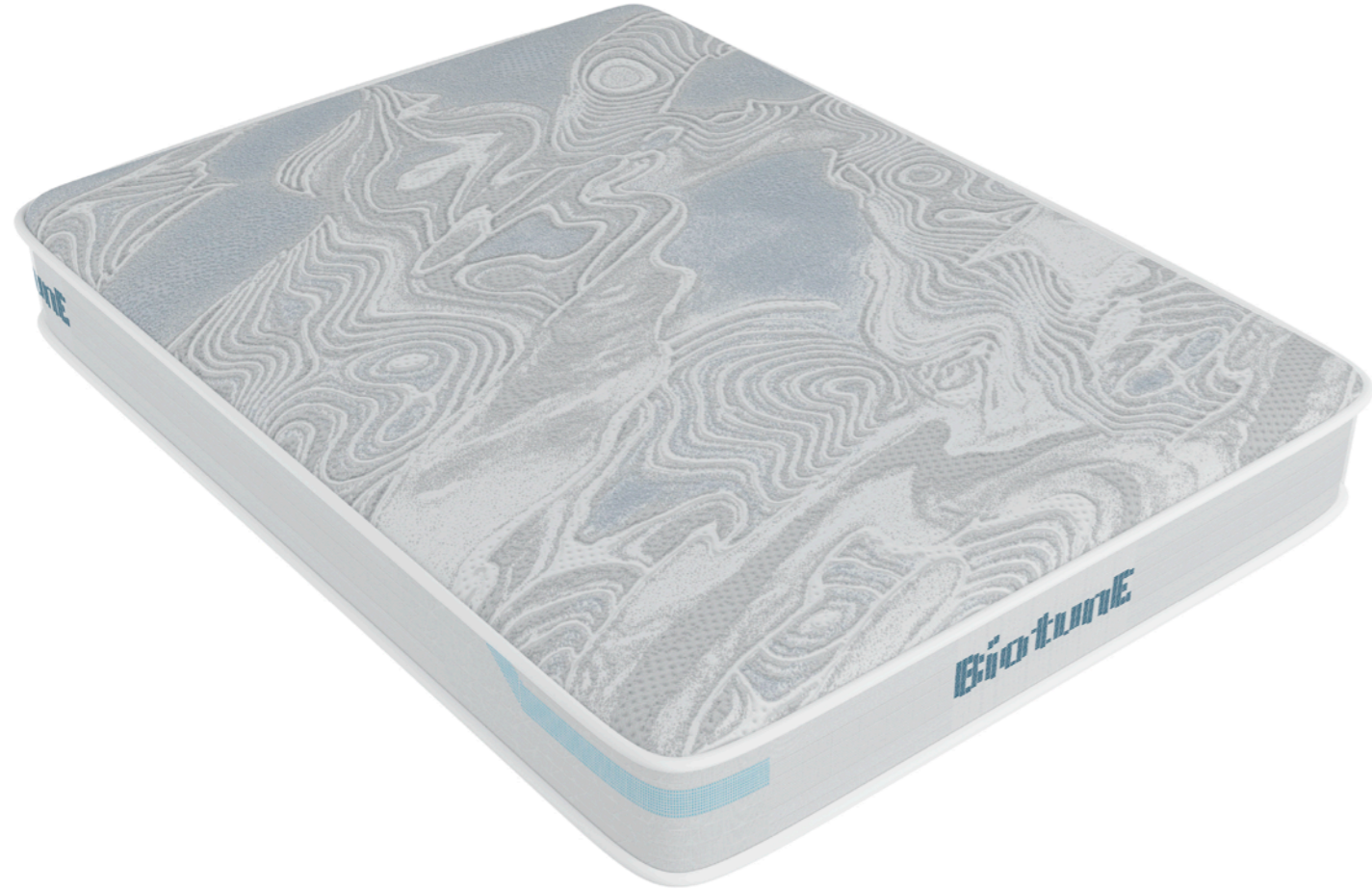


BORDER - Cj24629B  
fascel1027h25-1-4

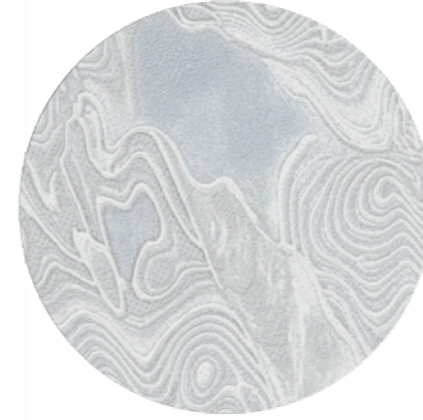


ctnassau.com

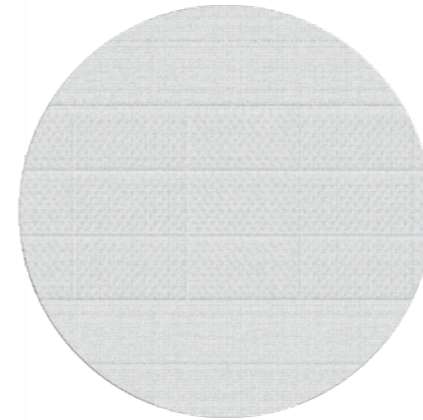
stellinigroup.com



MATRESS PANEL - Me10625  
e4pp500b230-1-6



BORDER - Dj24661B  
FASCEL1028H25-1-1

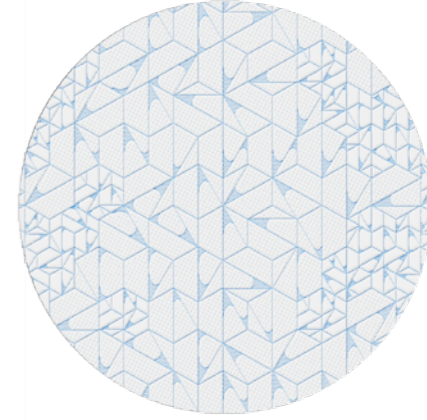


ctnassau.com

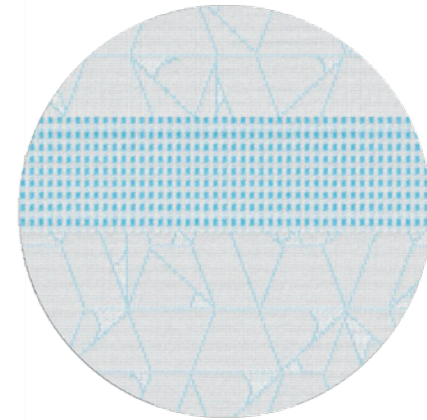
stellinigroup.com



MATRESS PANEL - Ma10579  
tempel350h230 - 2-1



BORDER - Dj24661A  
fascel10h25-1-1



ctnassau.com

stellinigroup.com



MATRESS PANEL - Ma10593  
pillfree0304 - 4-5



BORDER - Dj24683  
fasciae130h25 - 34-5



ctnassau.com

stellinigroup.com

BORDER - Dj24683  
fasciae130h25 - 34-5

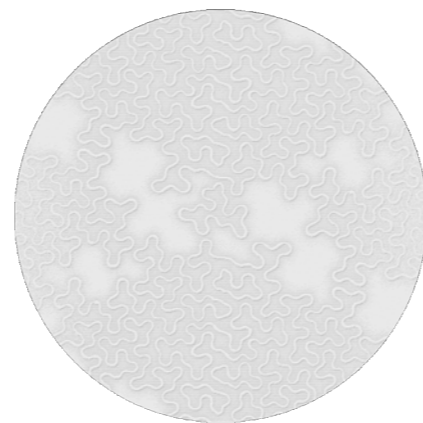


BORDER - Dj24683  
fasciae130h25 - 34-1





MATRESS PANEL - Ma10538  
pes180h220 - 104-6



BORDER - Dj24677  
Fascia1051h25-1-6



ctnassau.com

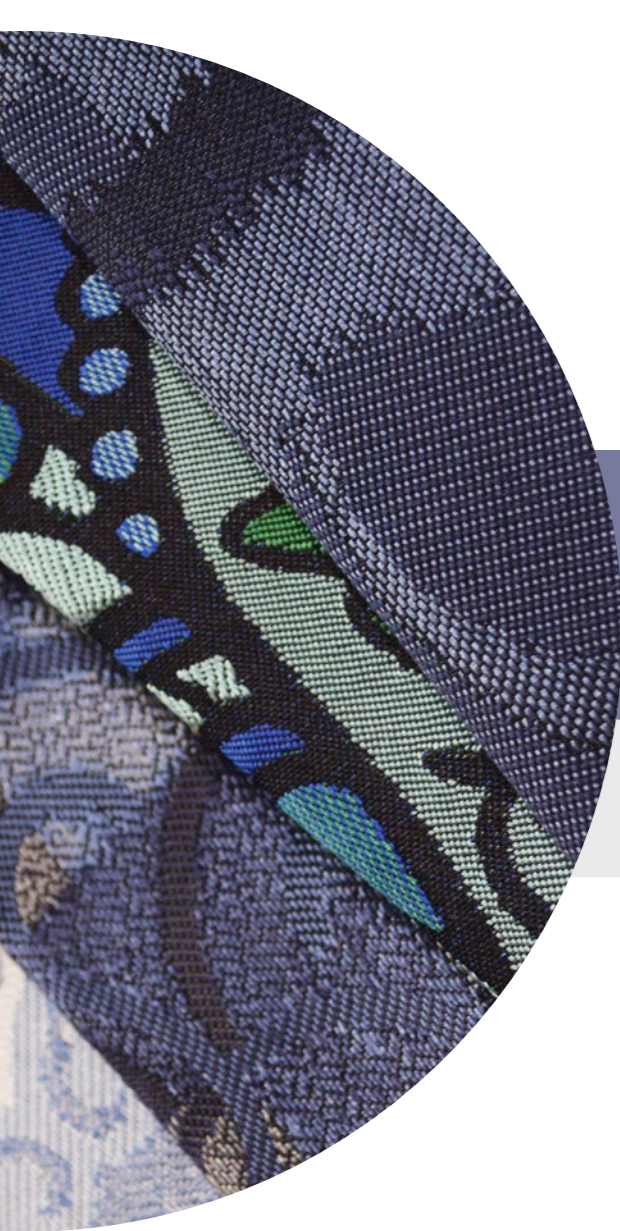
stellinigroup.com

BORDER - Dj24677  
Fascia1051h25-1-6



BORDER - Dj24677  
Fascia1051h25-1-5





# Pattern e Disegni Piani

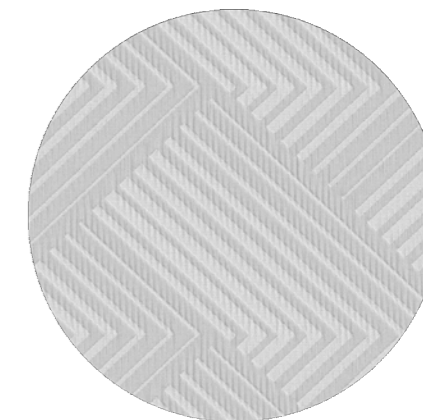
Fasce e Basi del letto in tessuto jacquard con texture di fantasia o colori piatti

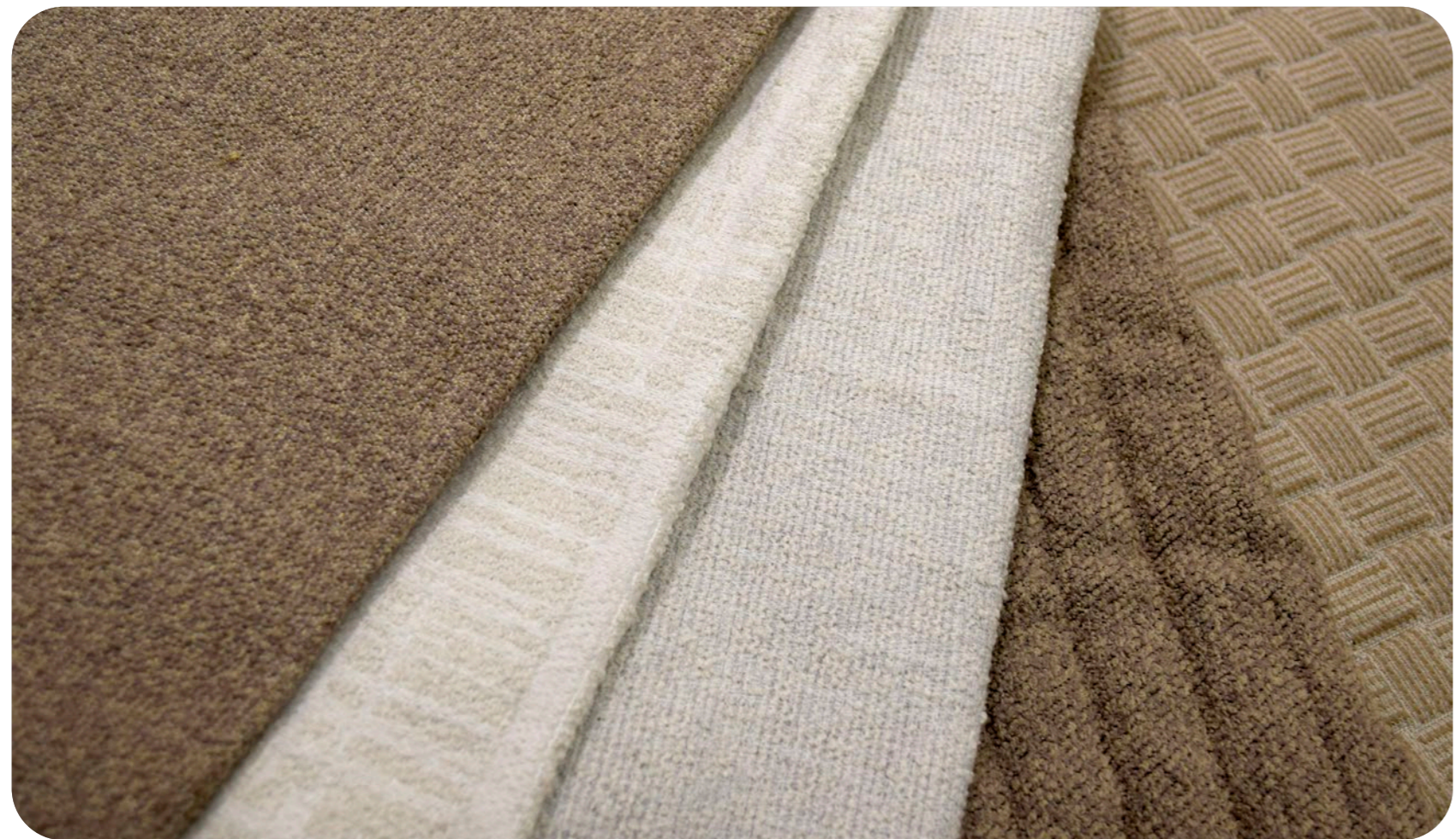


MATRESS PANEL - ue146 E3PdkPes45d1  
882-60



BORDER - us3112b  
kyle-994-25





BORDER - us1006g  
biotweedr9-900-0



BORDER - us2891  
biotoby-996-0



BORDER - us2532a  
biomonte9r-988-0



BORDER - us1433E  
bioyorkrp-996-15



BORDER - us2430a  
bioboltrp-997-15



BORDER - us2532a  
biomonter-988-15



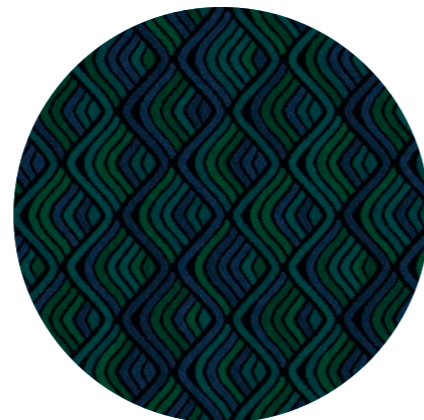
BORDER - uj3205b  
jewelbp-978-59



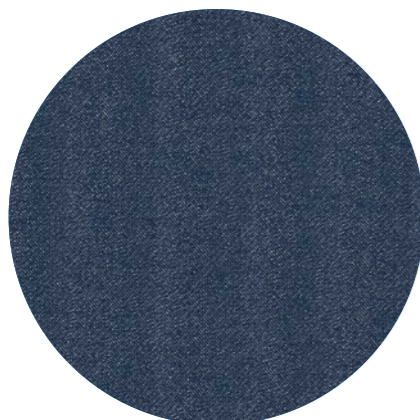
BORDER - us3242a  
yorkb-977-60



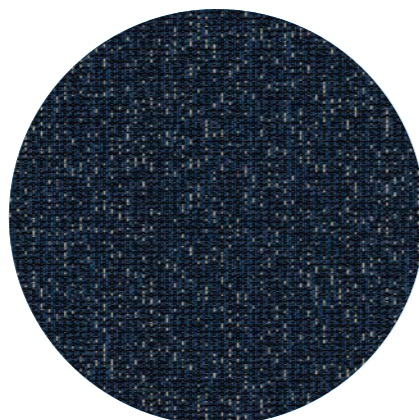
BORDER - us3288  
yorkb-983-68



BORDER - us1433e  
bioboltrp-996-61



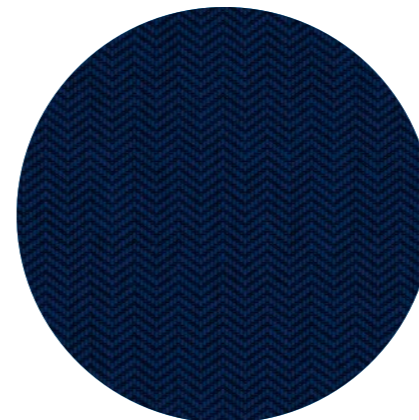
BORDER - us1775  
lennoxblk-941-63



BORDER - us3243  
yorkb-979-60



BORDER - us3337  
lw46ch-995-61



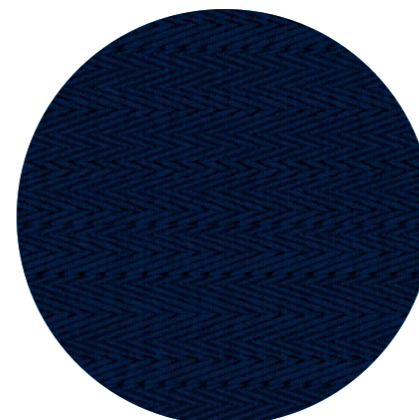
BORDER - us3417  
lw44ch-980-61



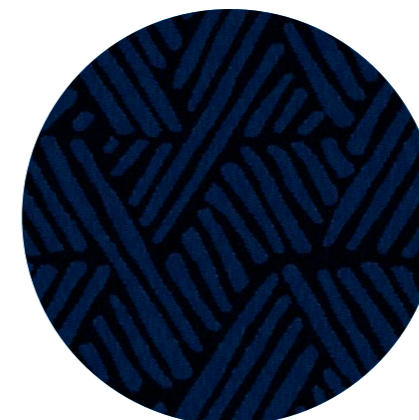
BORDER - us3417  
lw46ch-994-61



BORDER - us2791a  
lw46ch-997-61



BORDER - us3079a  
lw44ch-981-61



BORDER - us3092a  
lw46ch-993-61





# Fasce in Maglia

Fasce o basi letto in maglia  
con fantasie geometriche

**TUTTI I DISEGNI SONO DISPONIBILI  
IN DIFFERENTI COLORI**





# Tessuti Jacquard

MATRESS PANEL - Dg24617  
p5675dg - 18-5



 **STELLINI**  
Italian Style In Ticking Since 1947

 **CT NASSAU**  
Tape, Jacquard And Stretch Ticking

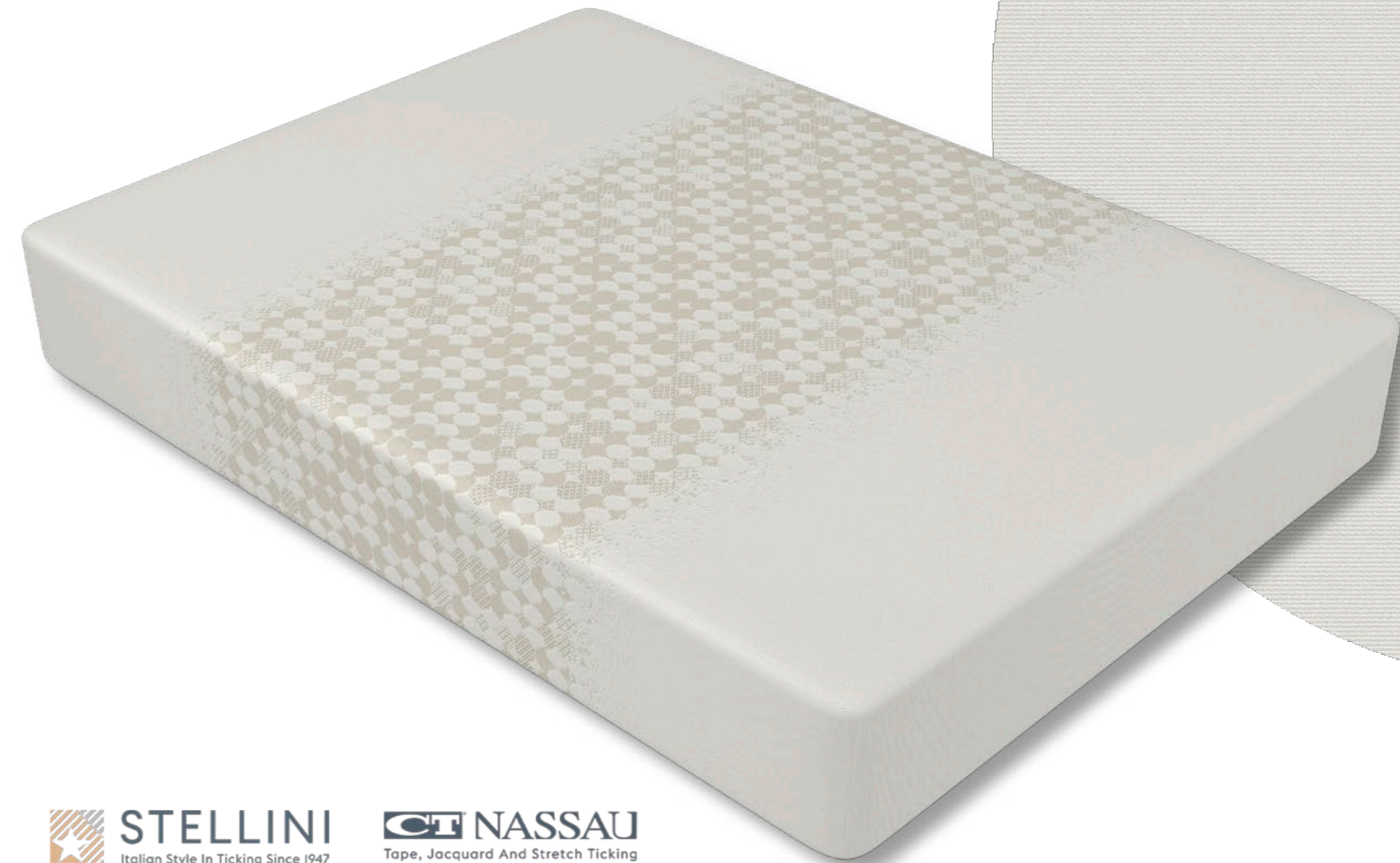
[stellinigroup.com](http://stellinigroup.com)

[ctnassau.com](http://ctnassau.com)

MATRESS PANEL - Dg24648  
p6050dg - 10-0

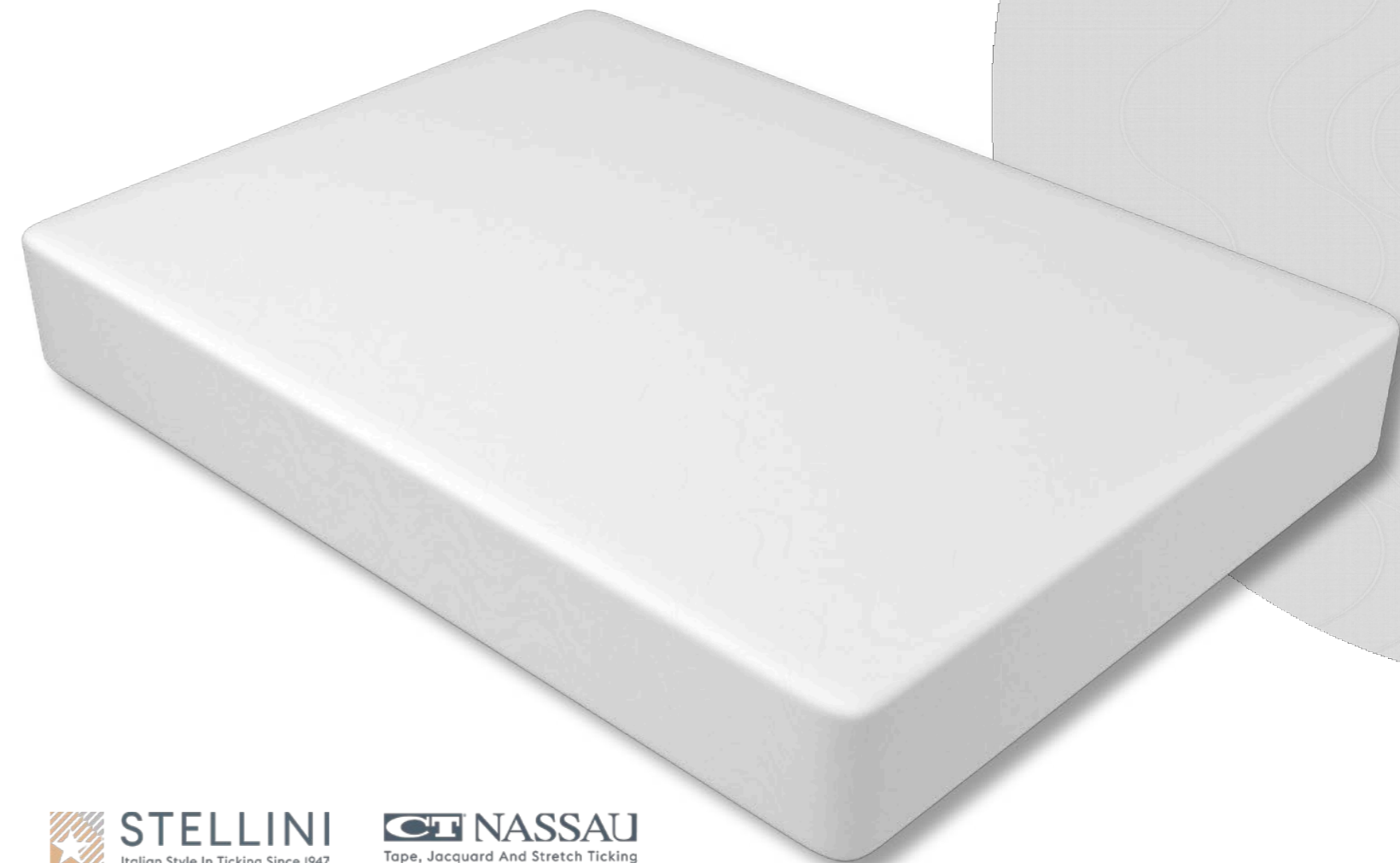


MATRESS PANEL - Dg24649  
p6050dg - 11-0



MATRESS PANEL - Dg24689  
p5638dg - 5-0

MATRESS PANEL - Dg24695  
P5638DG



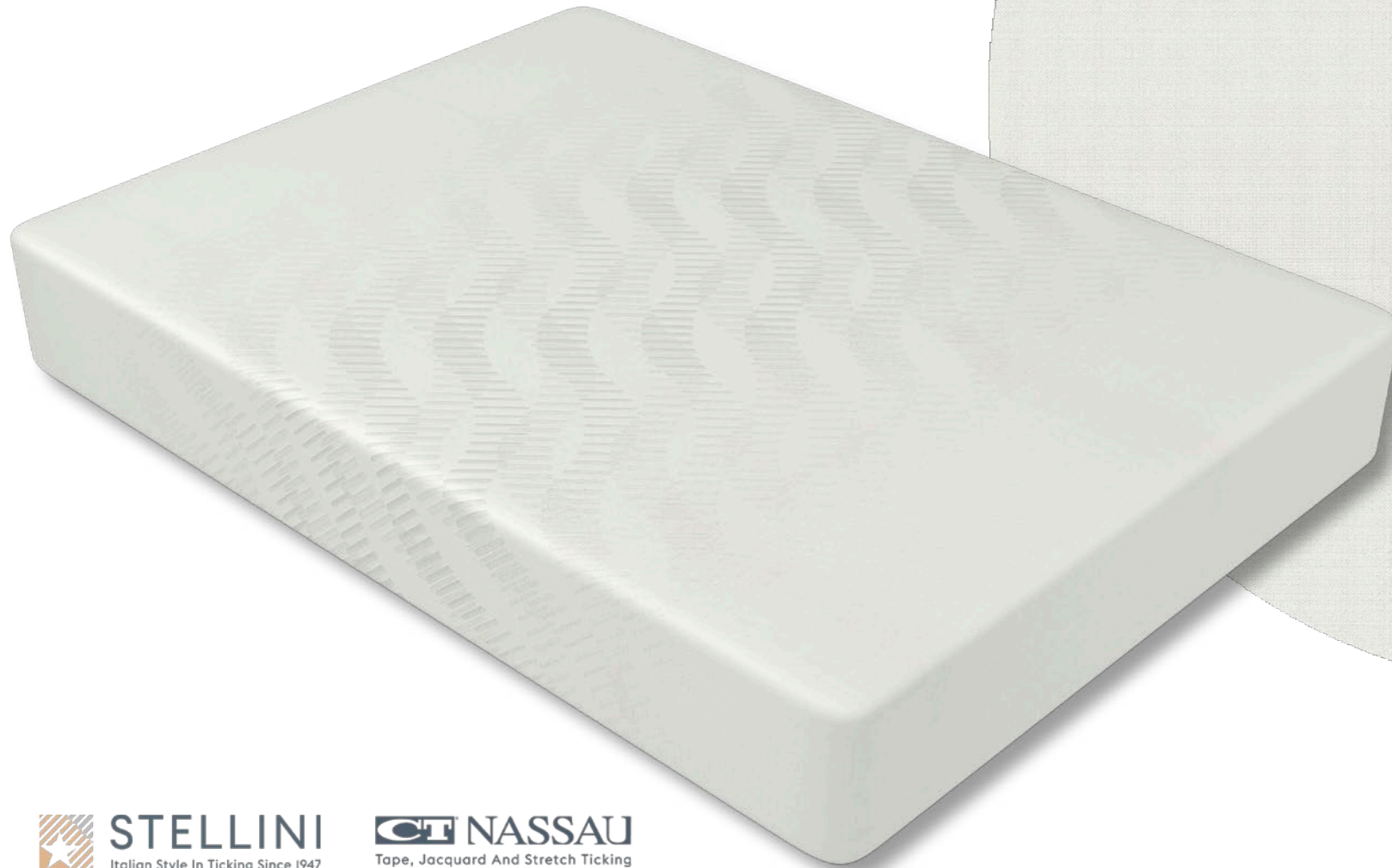
DISPONIBILE  
ANCHE IN:  10-6

MATRESS PANEL - Dj24631

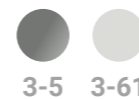
p6330 - 3-6

MATRESS PANEL - Dj24613

p4997-6-0



DISPONIBILE  
ANCHE IN:



3-5 3-61



[stellinigroup.com](http://stellinigroup.com)

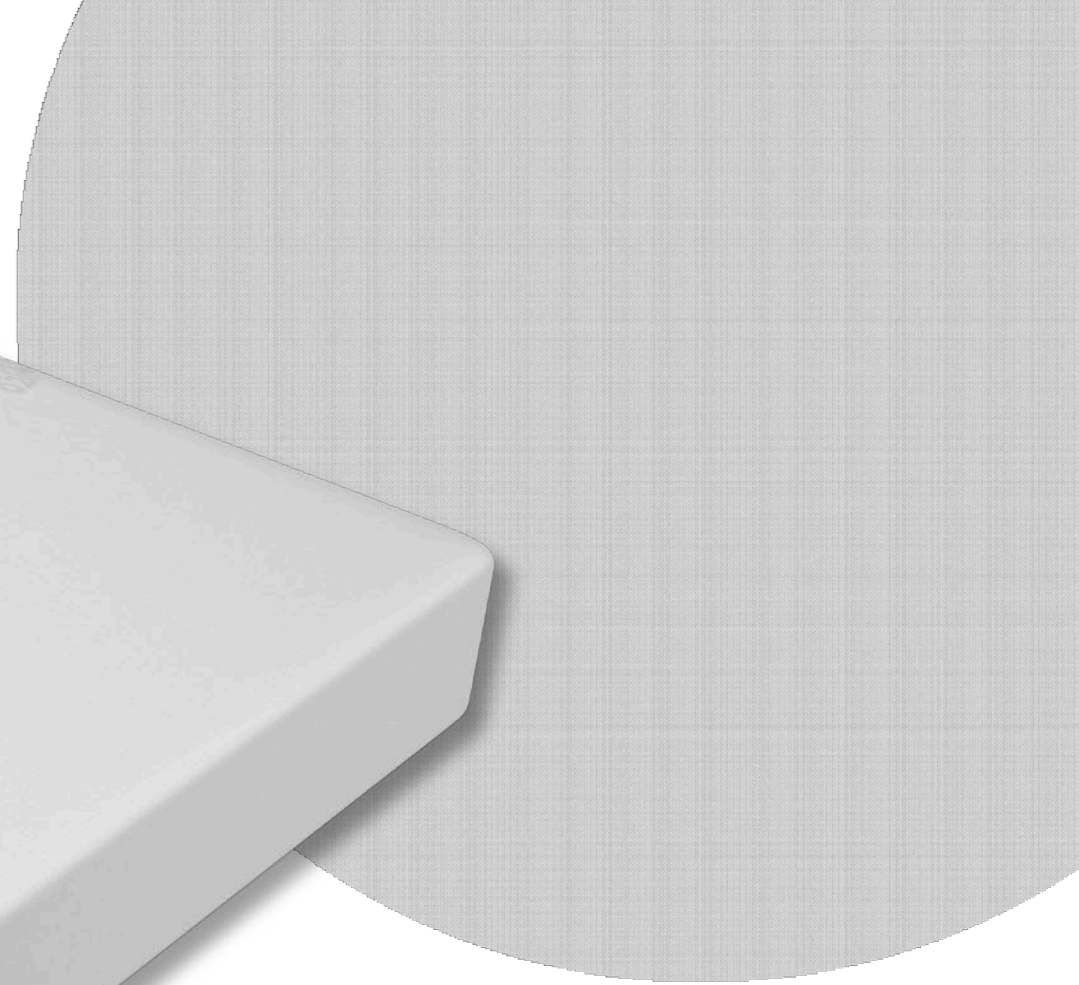
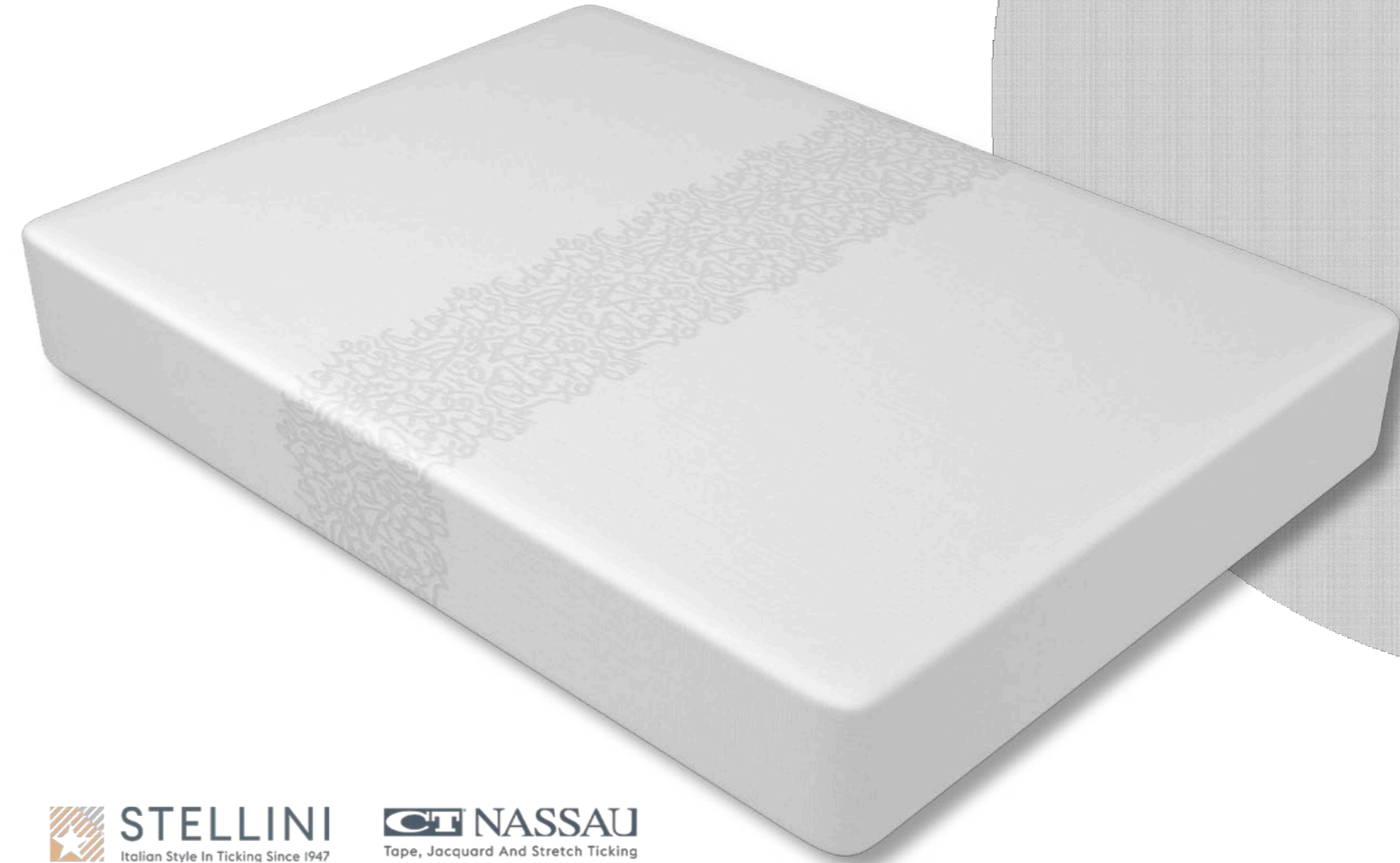
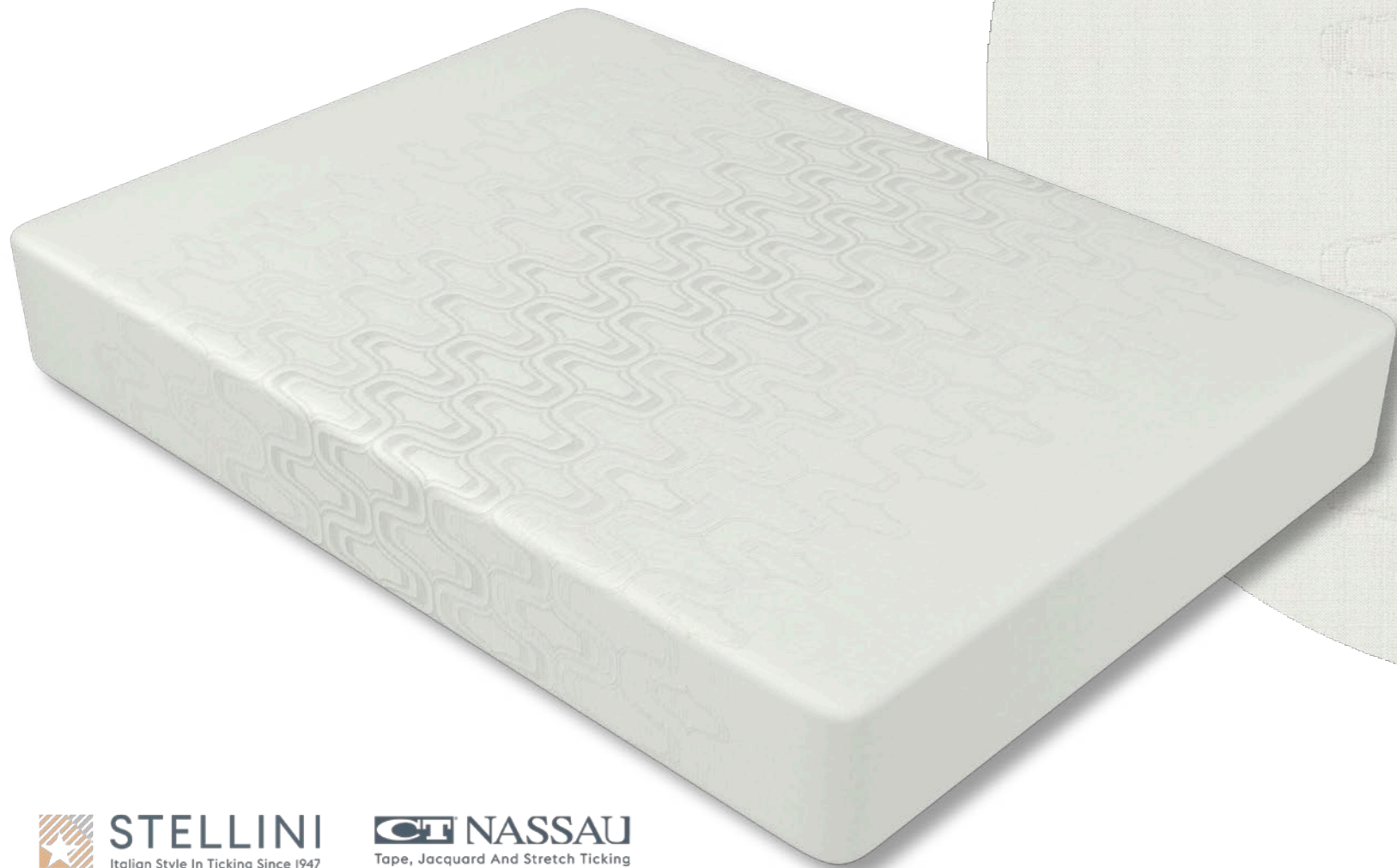
[ctnassau.com](http://ctnassau.com)

MATRESS PANEL - Dj24632

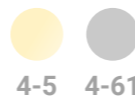
p6330 - 4-6

MATRESS PANEL - Dj24633

p6408-5-6

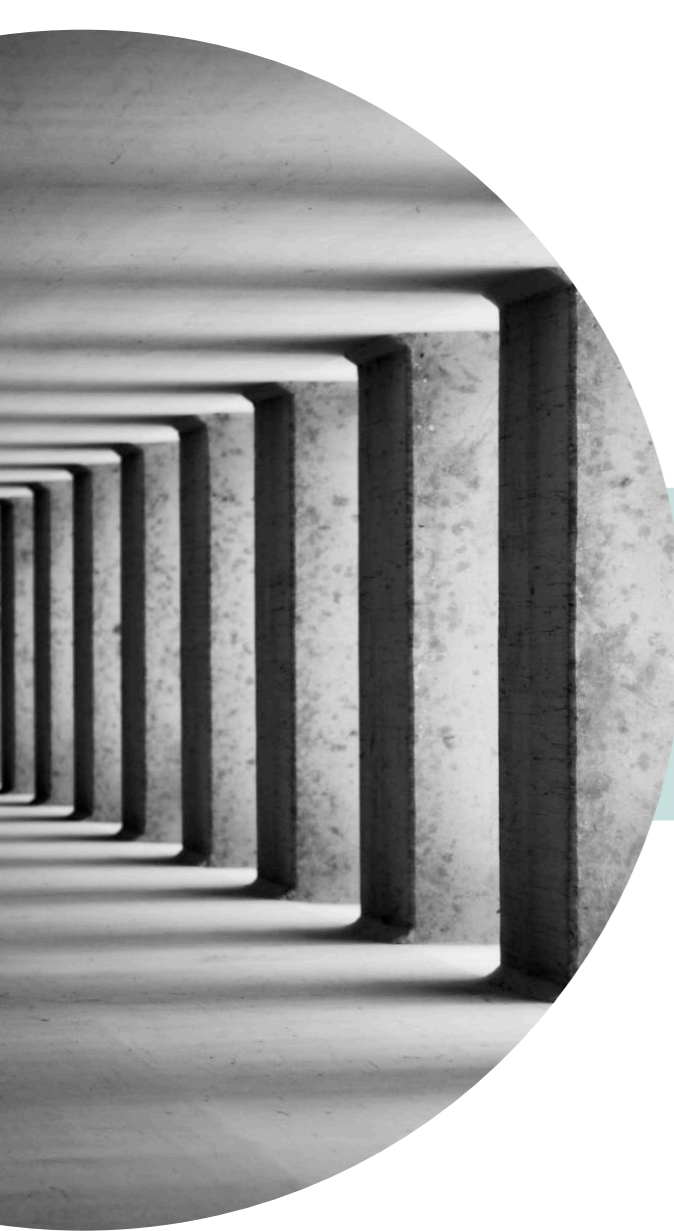


DISPONIBILE  
ANCHE IN:



[stellinigroup.com](http://stellinigroup.com)

[ctnassau.com](http://ctnassau.com)



# Tessuti in Maglia

MATRESS PANEL - MI10628  
stile185 - 3-7



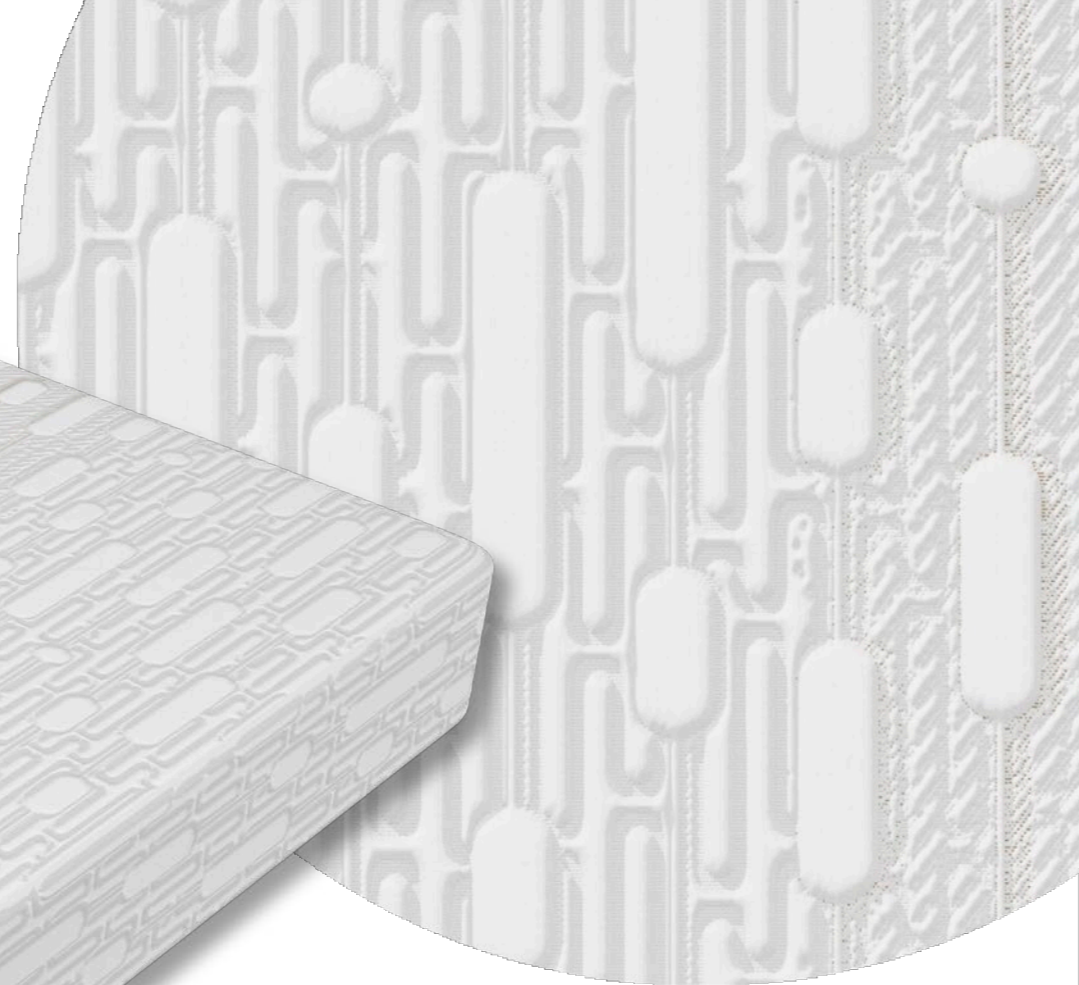
 **STELLINI**  
Italian Style In Ticking Since 1947

 **NASSAU**  
Tape, Jacquard And Stretch Ticking



DISPONIBILE  
ANCHE IN:  3-6

MATRESS PANEL - MI10619  
stile185 - 2-5

MATRESS PANEL - ML10538  
Stile21-2-6



DISPONIBILE  
ANCHE IN:  2-6

DISPONIBILE  
ANCHE IN:  2-1  2-7

MATRESS PANEL - ML10537

Stile21-1-7



DISPONIBILE  
ANCHE IN:



102-1



102-6

 **STELLINI**  
Italian Style In Ticking Since 1947

 **NASSAU**  
Tape, Jacquard And Stretch Ticking

MATRESS PANEL - ML10543

Stile17-3-0



 **STELLINI**  
Italian Style In Ticking Since 1947

 **NASSAU**  
Tape, Jacquard And Stretch Ticking

[stellinigroup.com](http://stellinigroup.com)

[ctnassau.com](http://ctnassau.com)

MATRESS PANEL - Ma10589  
pes600hb220 - 1-5



DISPONIBILE  
ANCHE IN:



1-3



1-6

 **STELLINI**  
Italian Style In Ticking Since 1947

 **NASSAU**  
Tape, Jacquard And Stretch Ticking

MATRESS PANEL - ML10586  
Stile17-1-67



DISPONIBILE  
ANCHE IN:



1-1



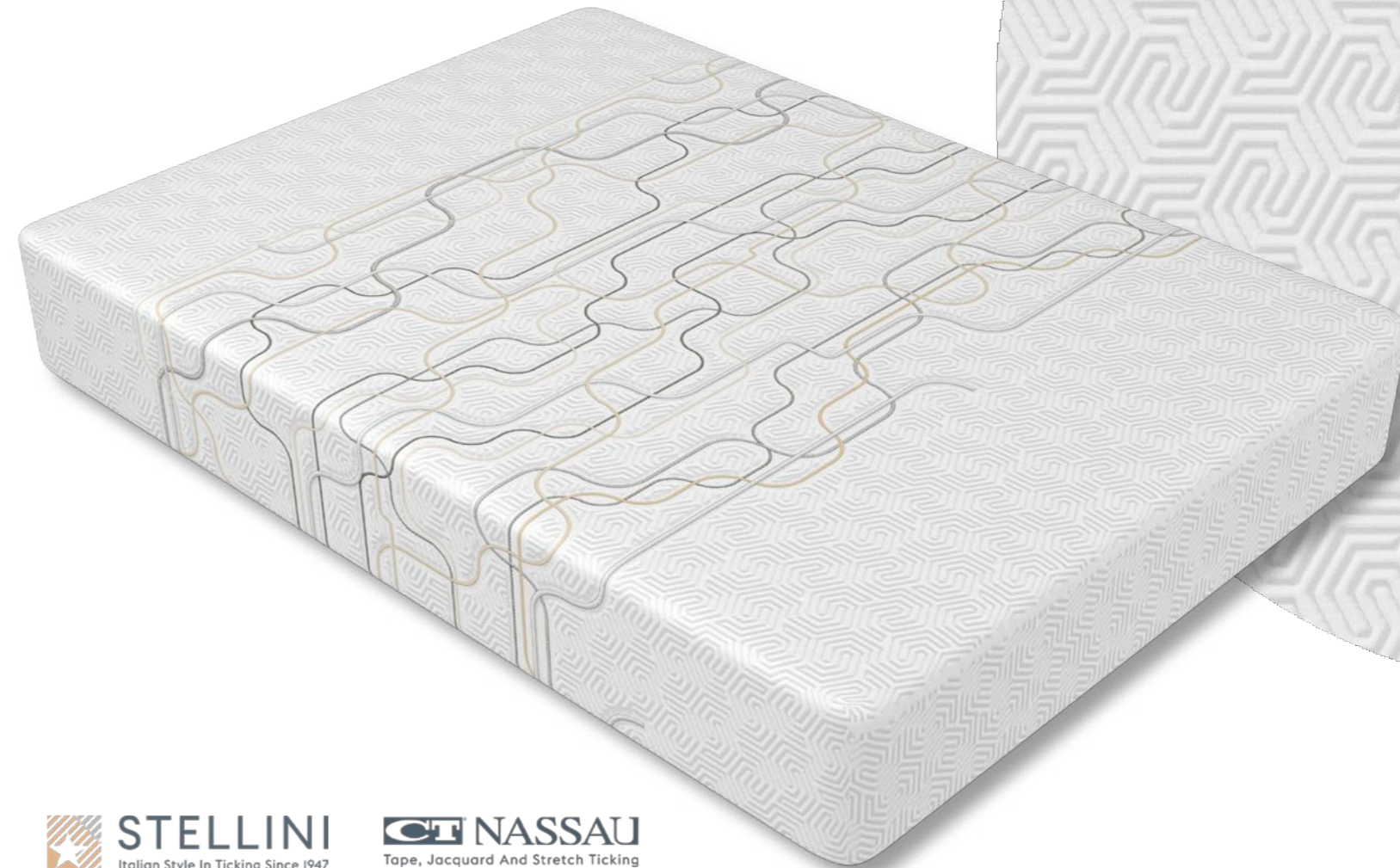
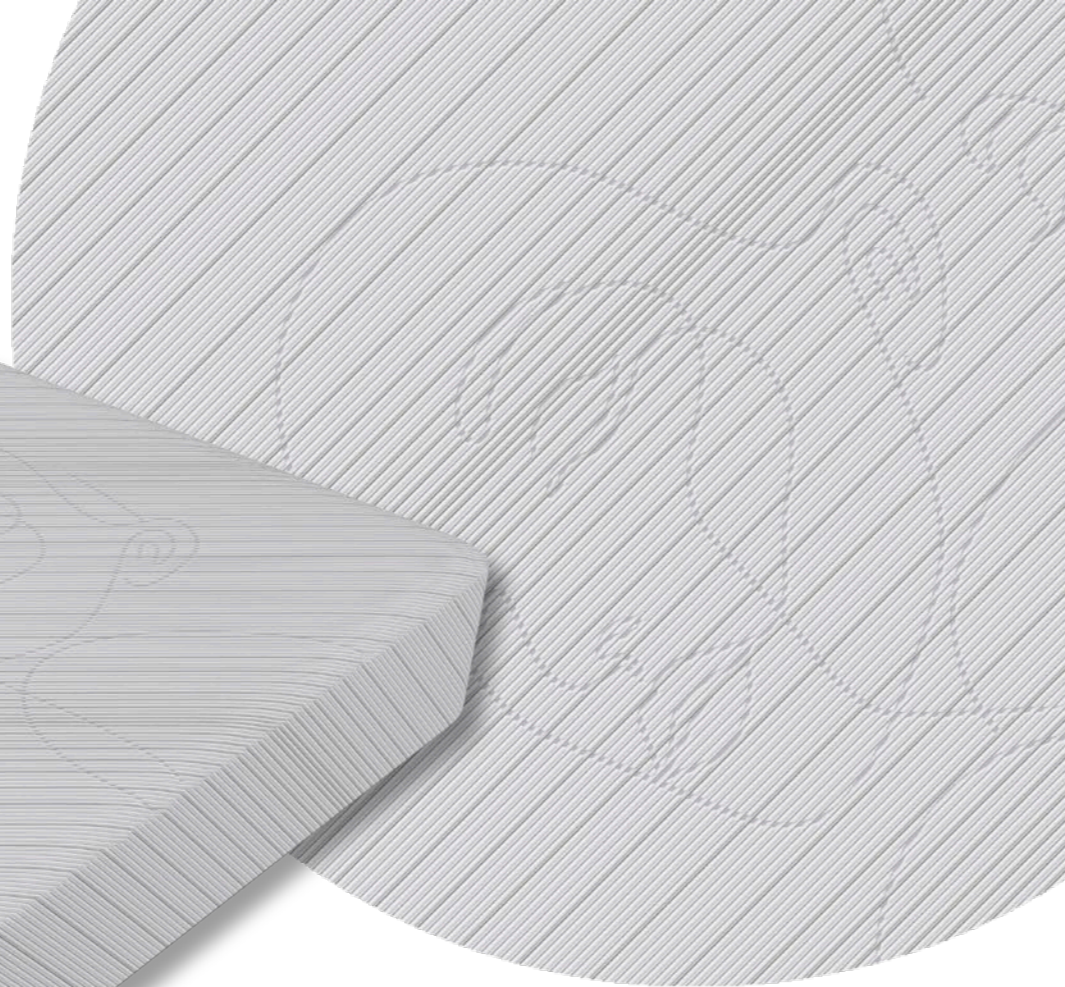
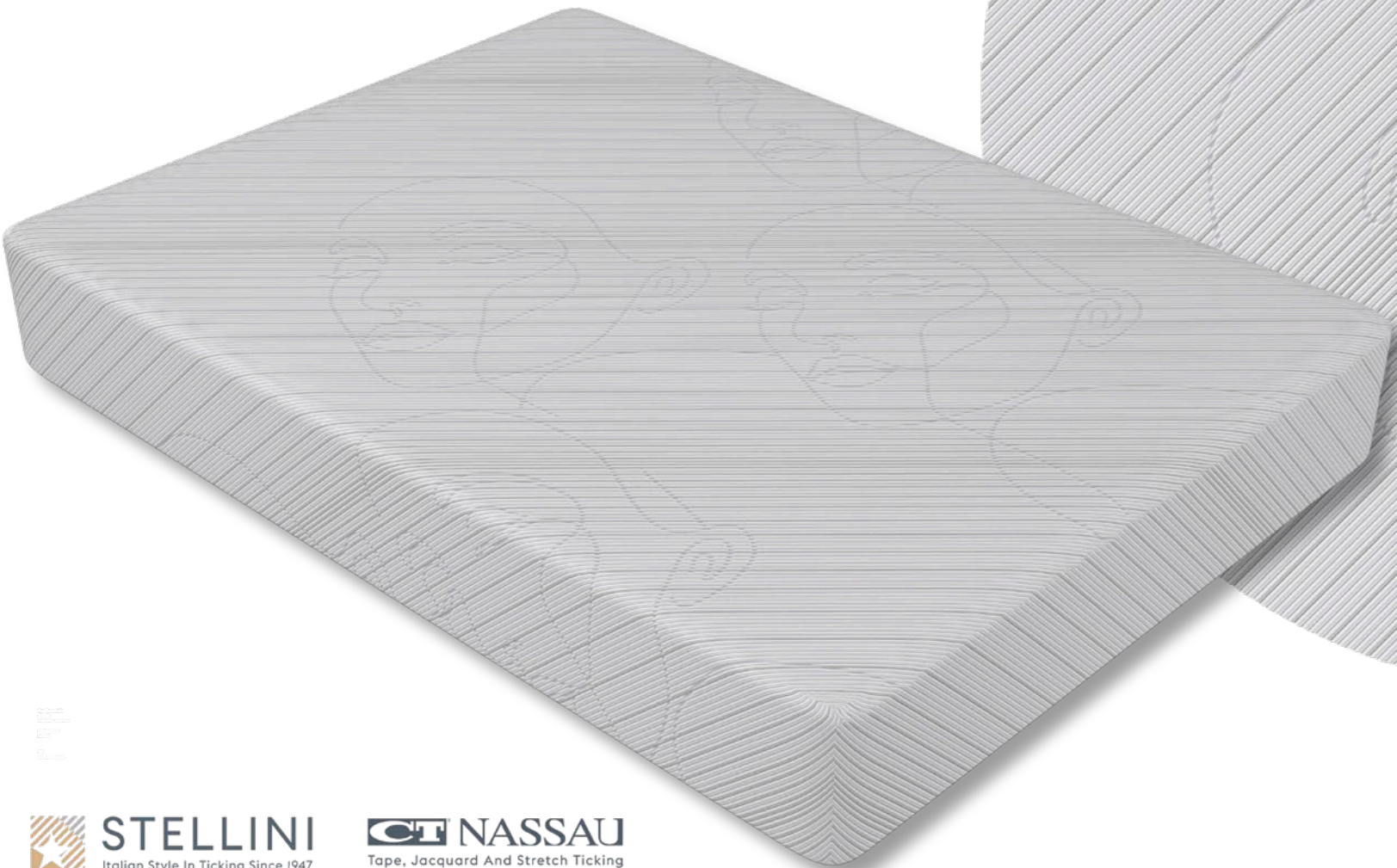
1-6

 **STELLINI**  
Italian Style In Ticking Since 1947

 **NASSAU**  
Tape, Jacquard And Stretch Ticking

MATRESS PANEL - Me10582  
e4pes400p230-8-6

MATRESS PANEL - Me10576  
e4pes350p230 - 11-6



DISPONIBILE  
ANCHE IN:

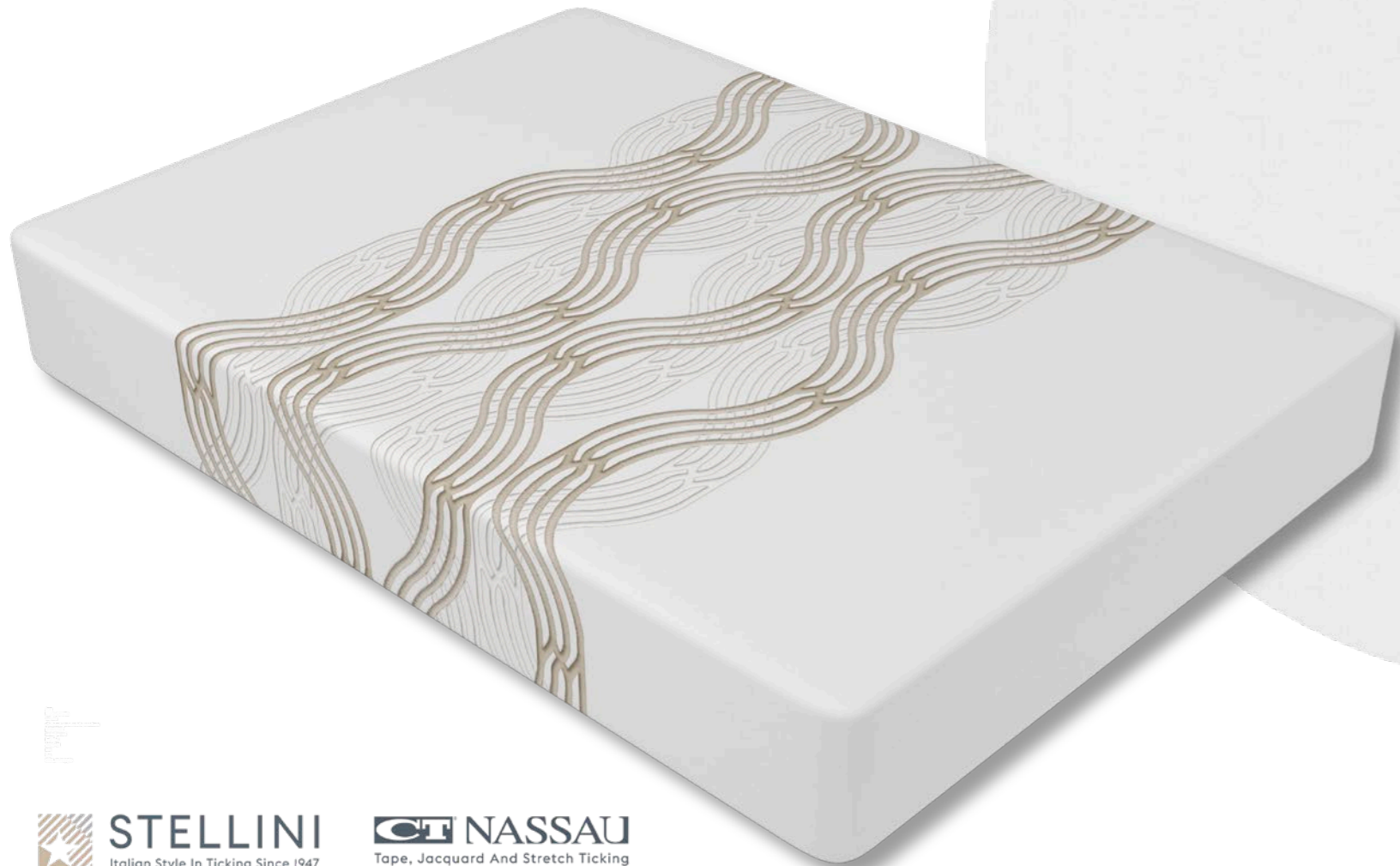


8-1



8-7

MATRESS PANEL - Me10563  
ewkmpecv270h230 - 6-7



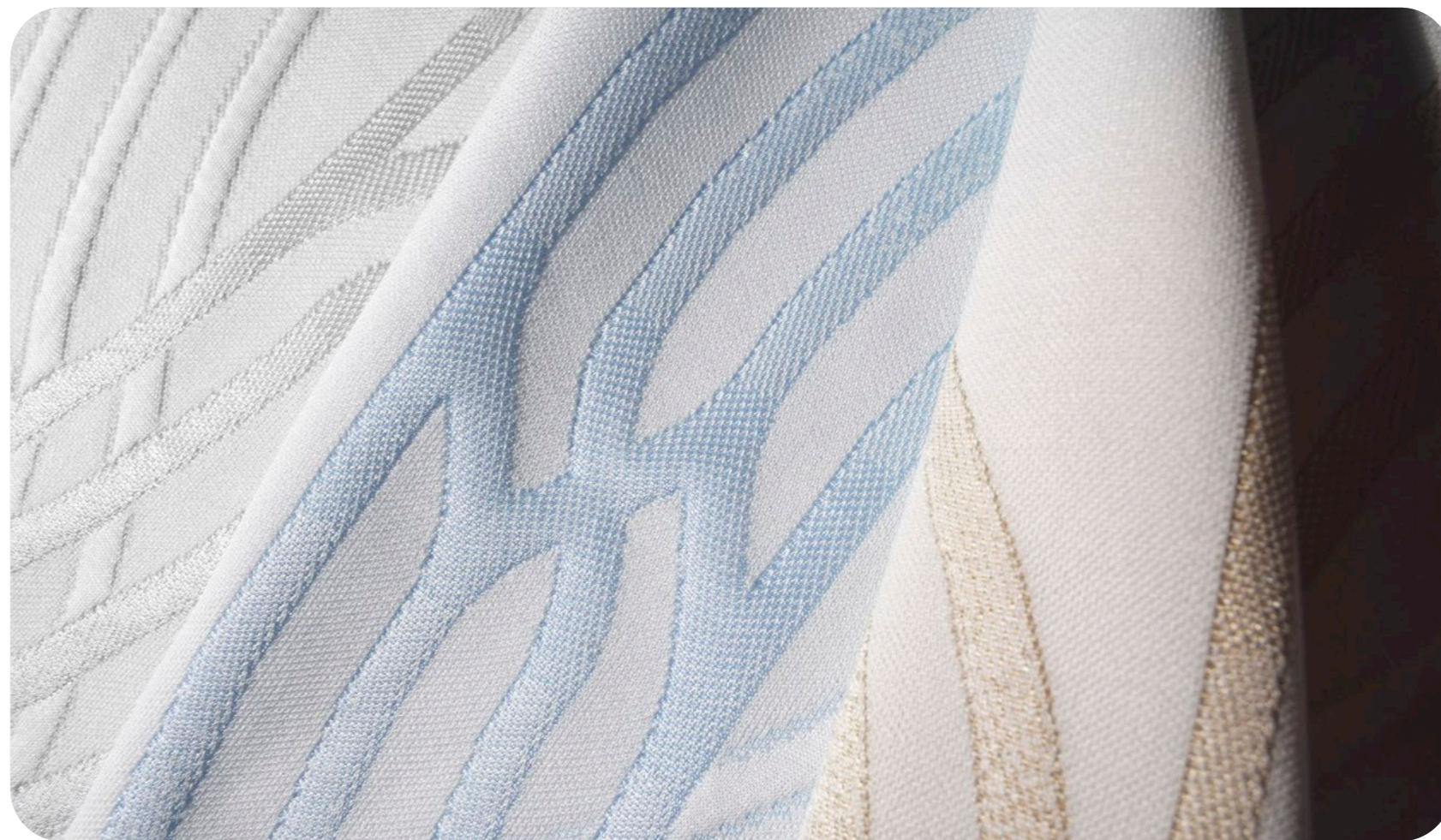
DISPONIBILE  
ANCHE IN:



6-1



6-6



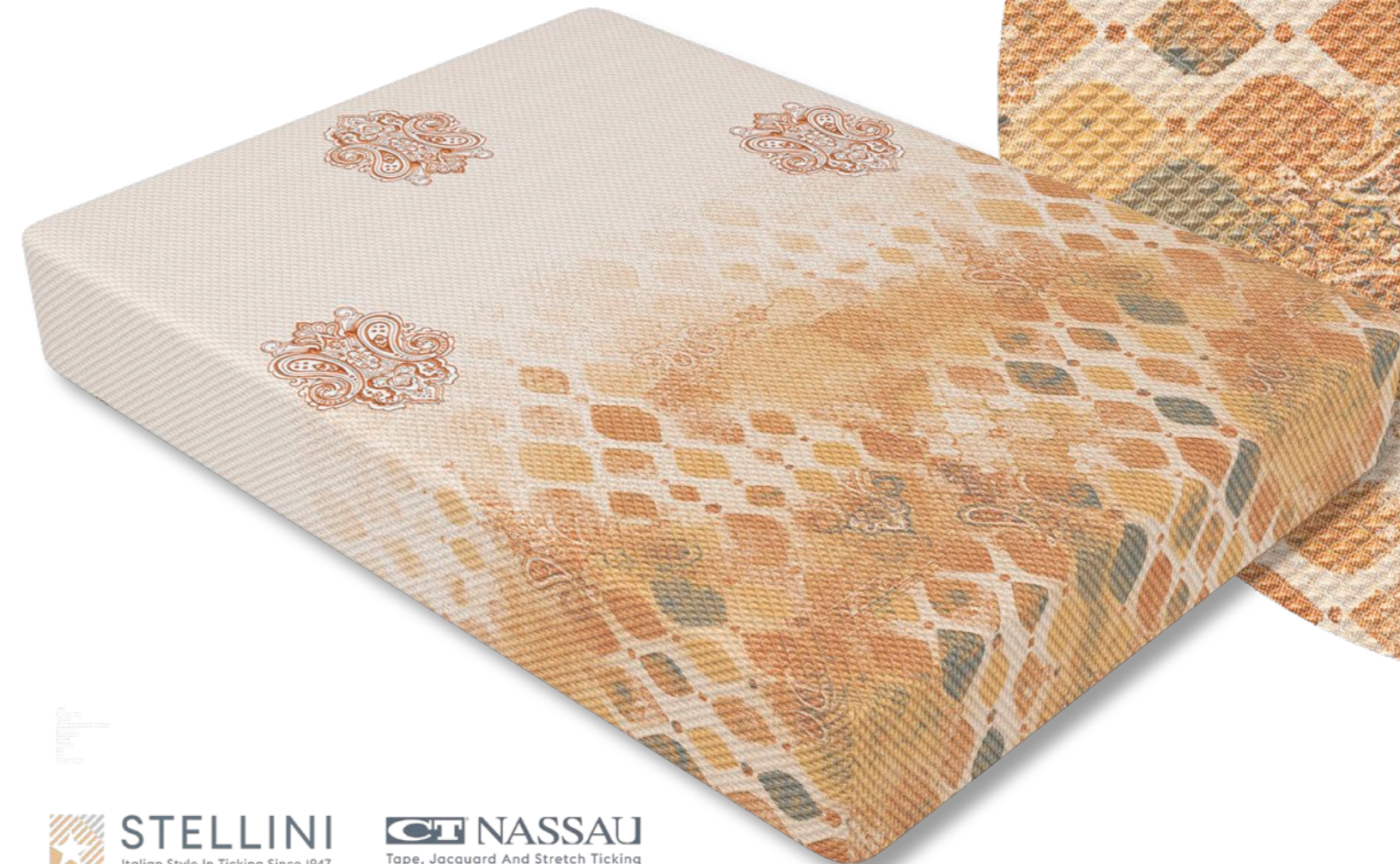
**STELLINI**  
Italian Style In Ticking Since 1947

**CT NASSAU**  
Tape, Jacquard And Stretch Ticking

SPECIAL DESIGNS



MATRESS PANEL - Me10613  
e5pes500v230 - 1-5



**STELLINI**  
Italian Style In Ticking Since 1947

**CT NASSAU**  
Tape, Jacquard And Stretch Ticking

DISPONIBILE  
ANCHE IN:

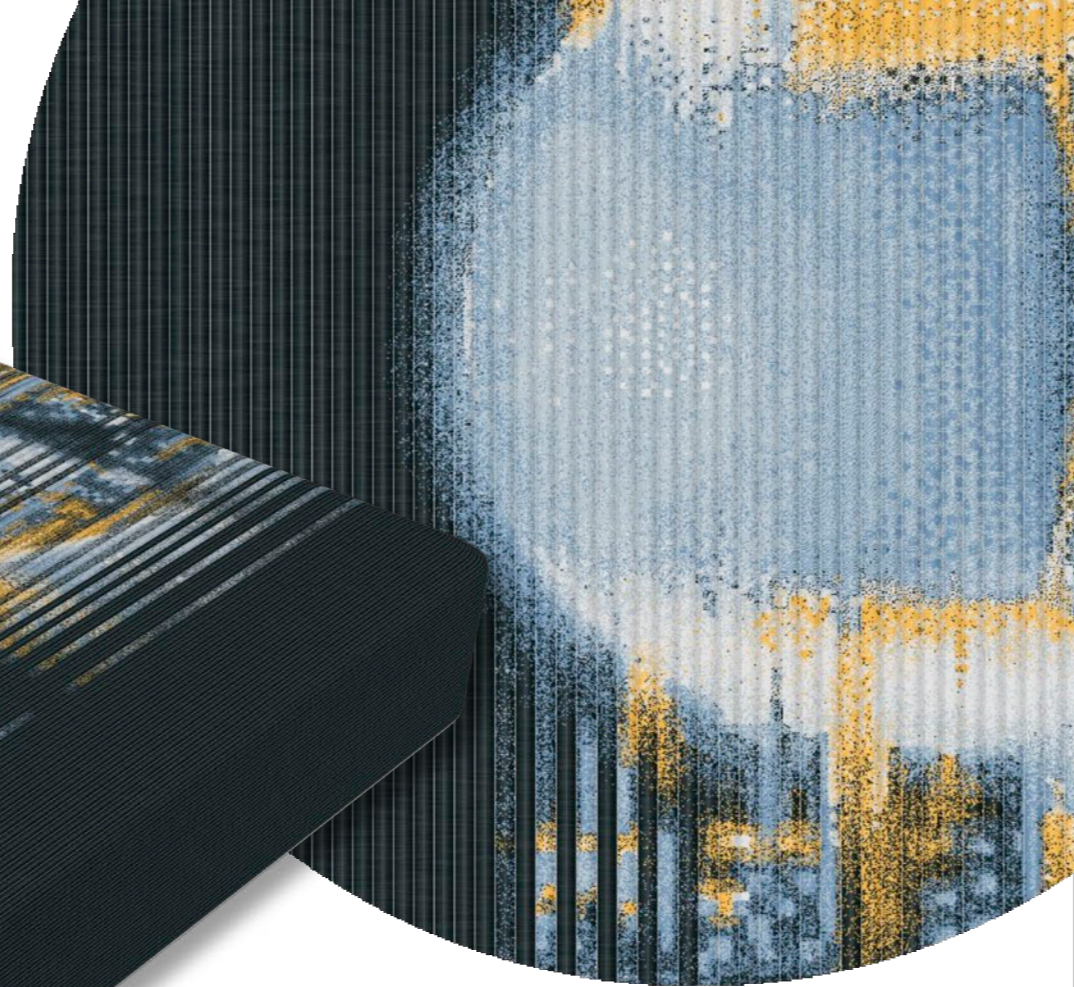
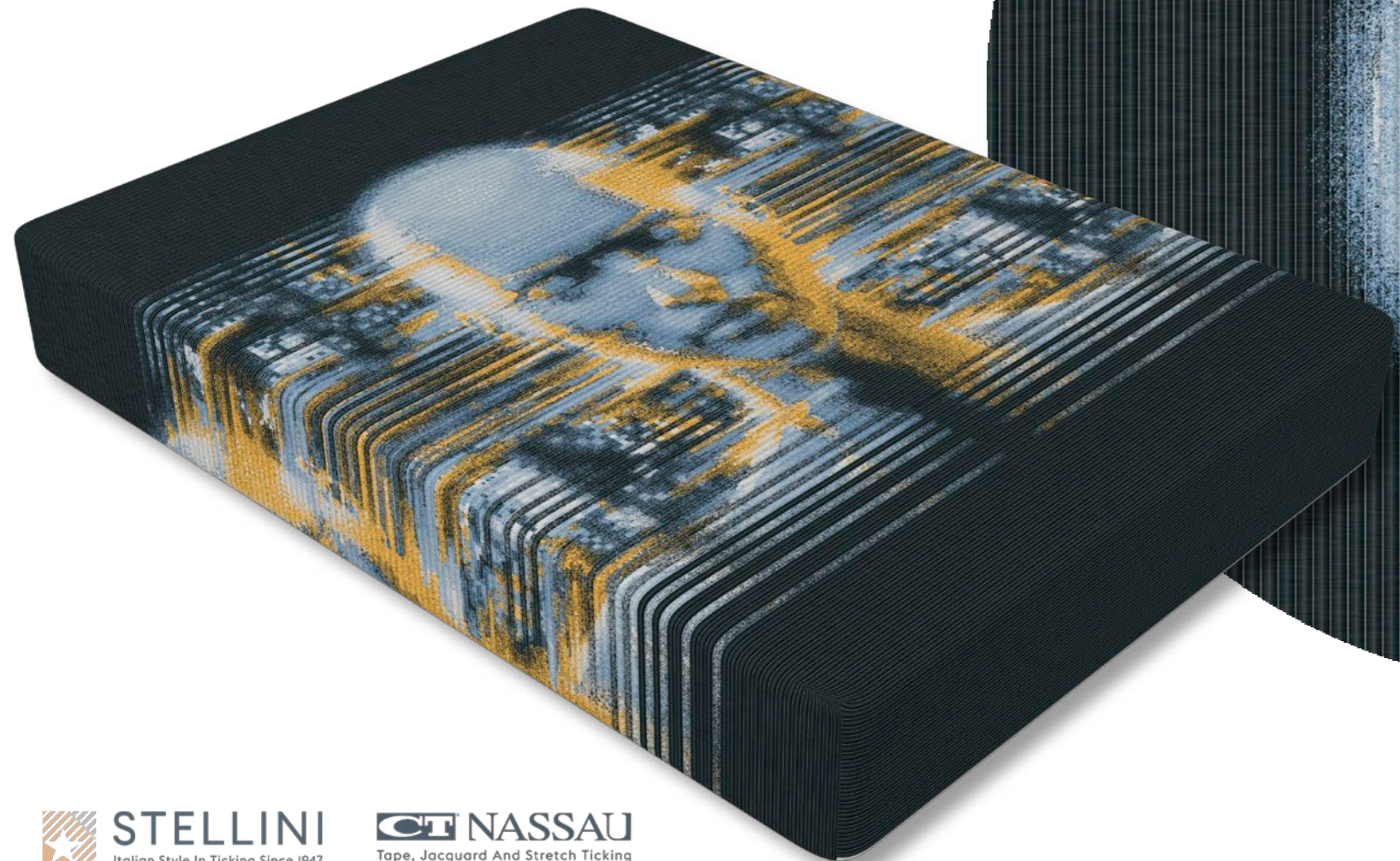


1-6

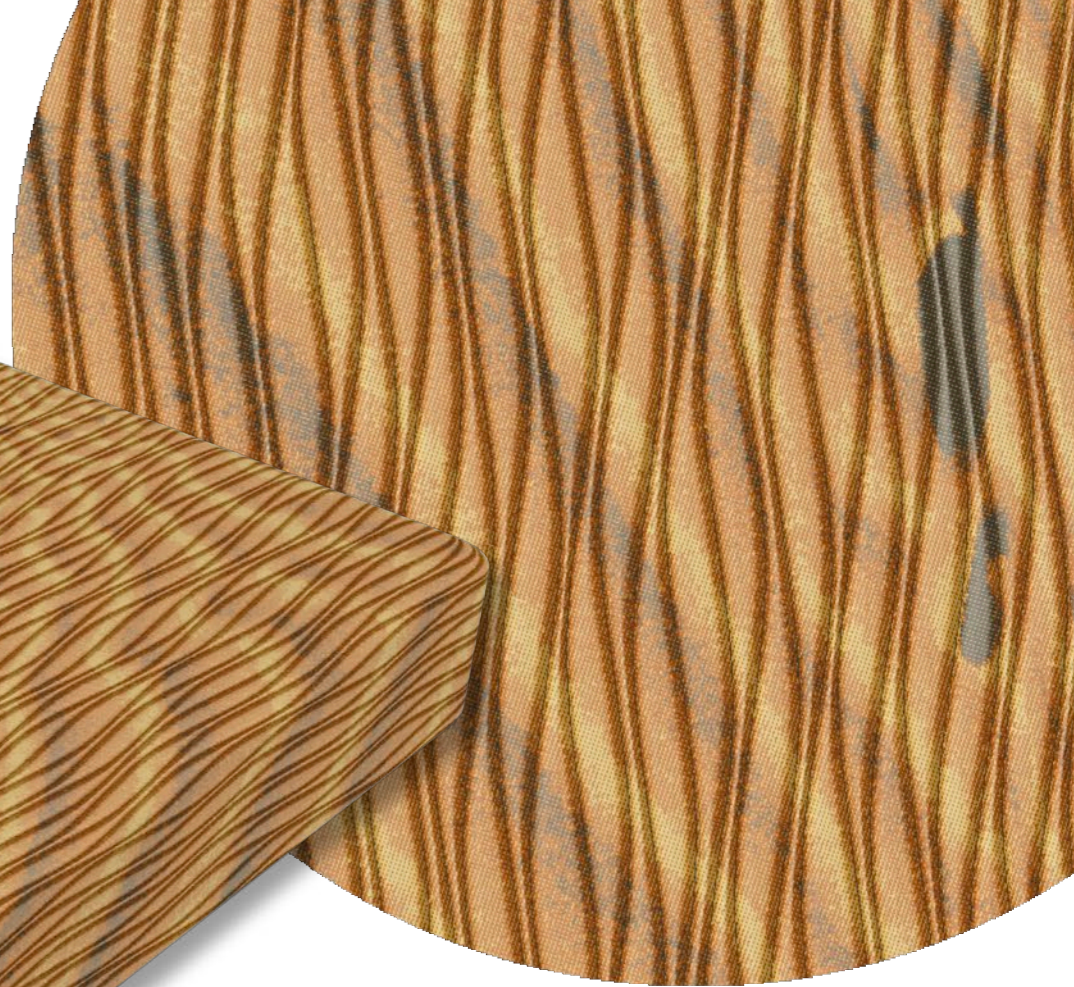
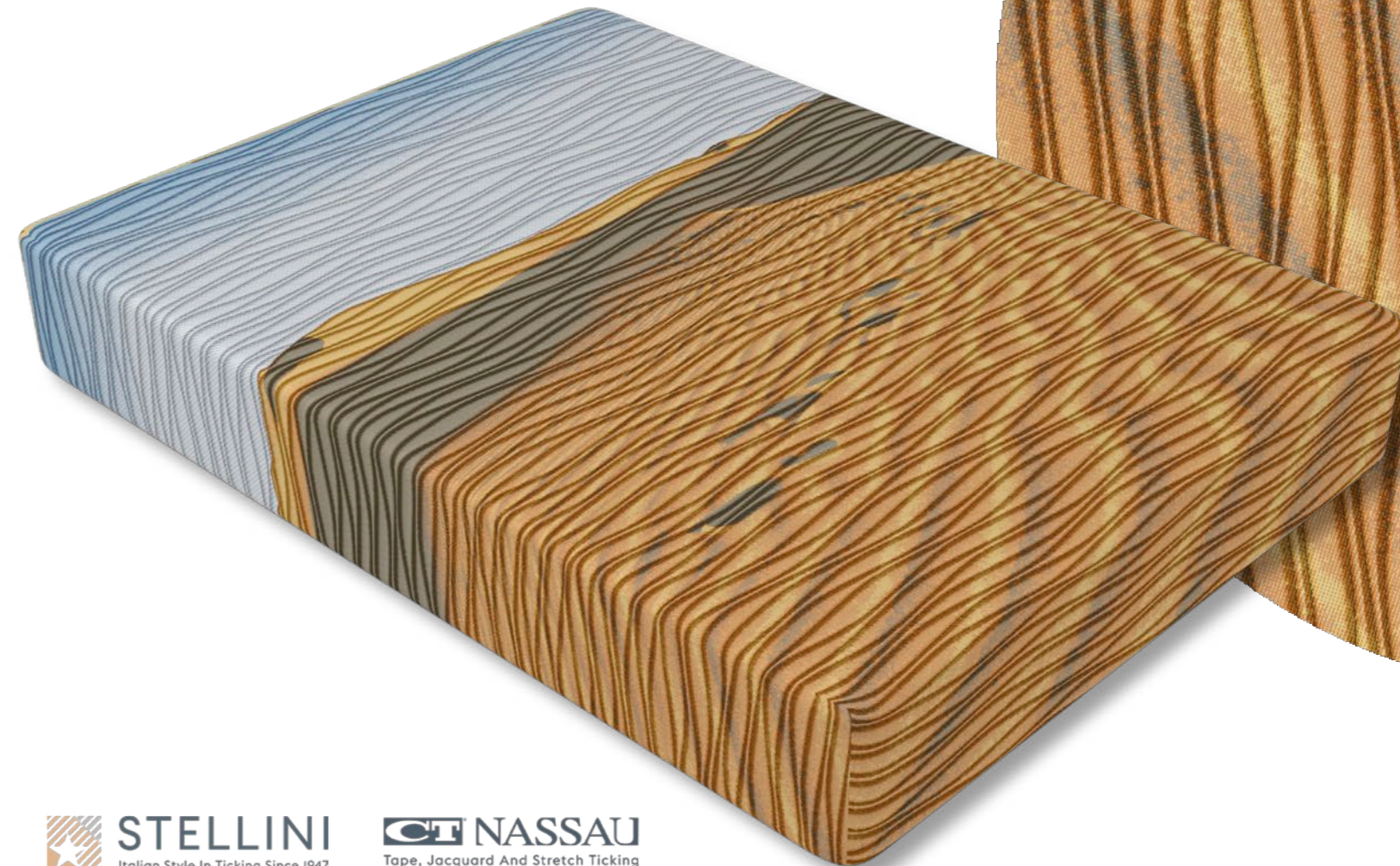


1-7

MATRESS PANEL - Me10611  
E5pes500p220-3-1



MATRESS PANEL - Me10607  
e5pes500vv230 - 1-5





# Il lato naturale

Qualità: Lino, Viscosa, Cotone, combinati  
in tessuti dal perfetto tocco naturale.

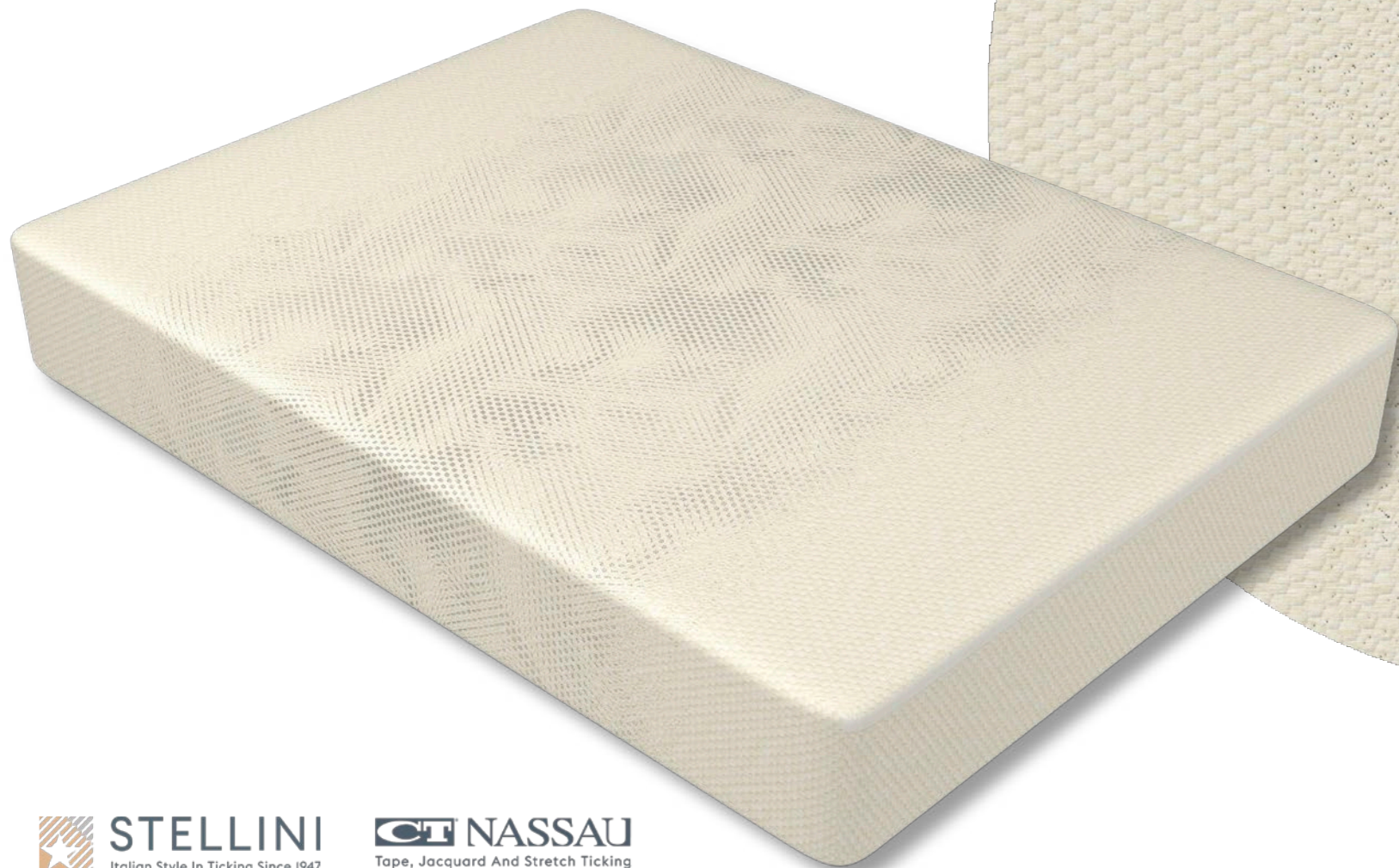
SCOPRI DI  
PIÙ QUI:



DISPONIBILE VERSIONE  
FR O CON COTONE  
ORGANICO



MATRESS PANEL - Ma10614  
pvl240b230-24-6



MATRESS PANEL - Ma10592  
pvl240b230 -22-6



# REUSE

Tessuti riciclati per materassi

SCOPRI DI  
PIÙ QUI:



MATRESS PANEL - Ma10621  
recy200pe300c230 -4-0



**STELLINI**  
Italian Style In Ticking Since 1947

**CT NASSAU**  
Tape, Jacquard And Stretch Ticking

[stellinigroup.com](http://stellinigroup.com)

[ctnassau.com](http://ctnassau.com)



**Tencel™**  
Feels so right

X

**REFIBRA™**  
technology

Una seconda vita a materiali pre e post-consumo.

SCOPRI DI PIÙ QUI:



DISPONIBILE ANCHE IN:



1-3



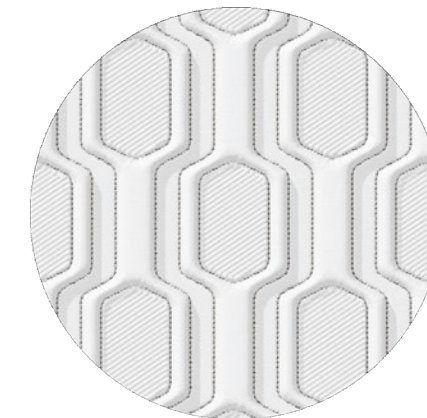
1-5



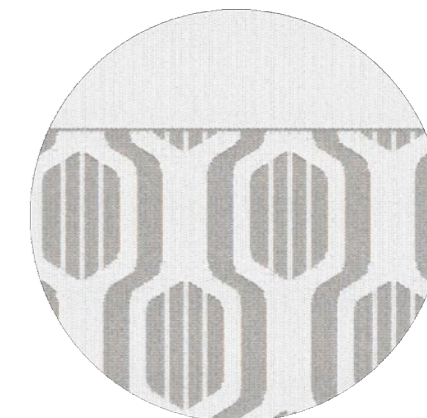
1-6



MATRESS PANEL - Ma10622  
recyten400hb230 - 1-6



BORDER - Dj24666  
fasciae190h25 - 10-6

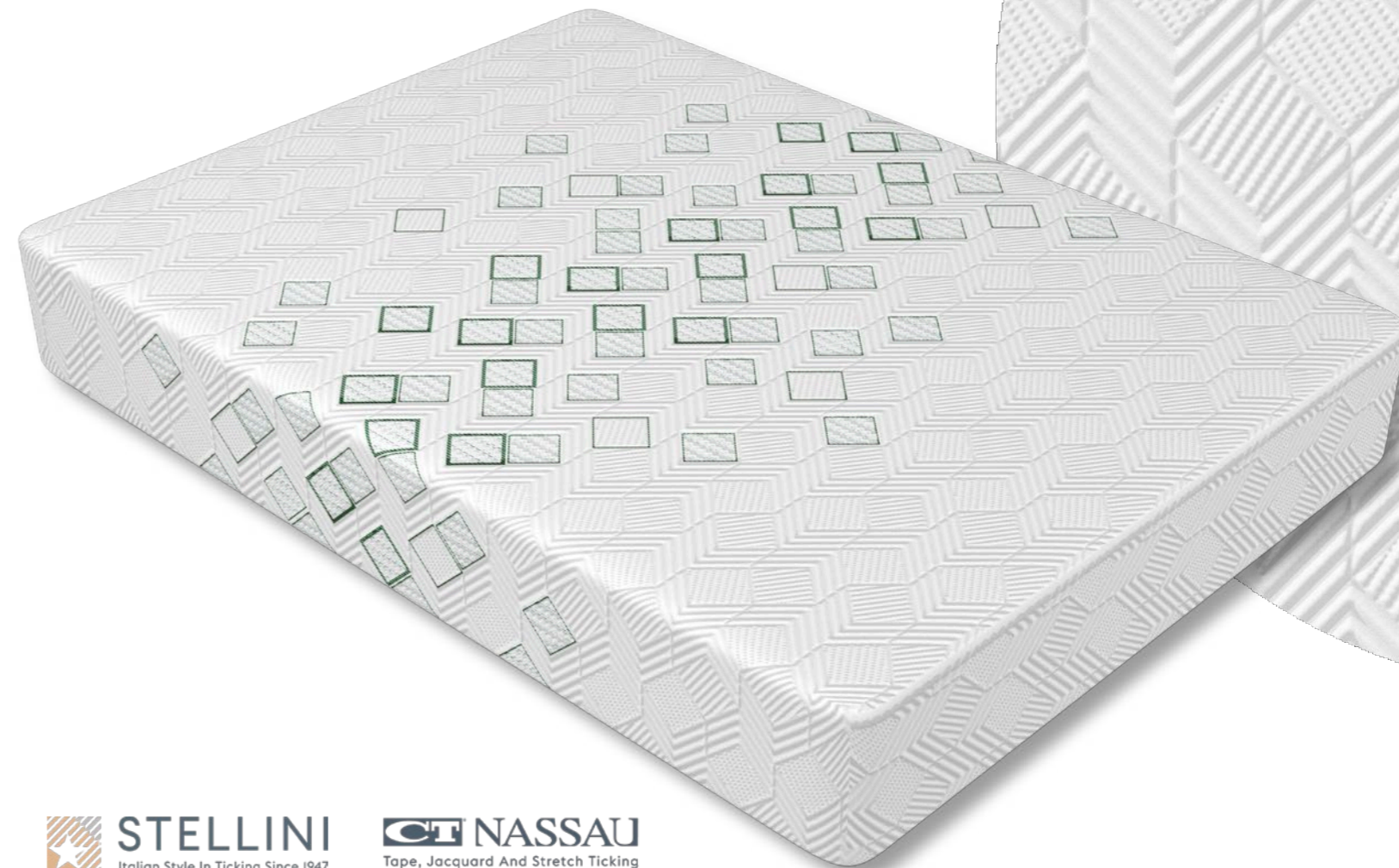
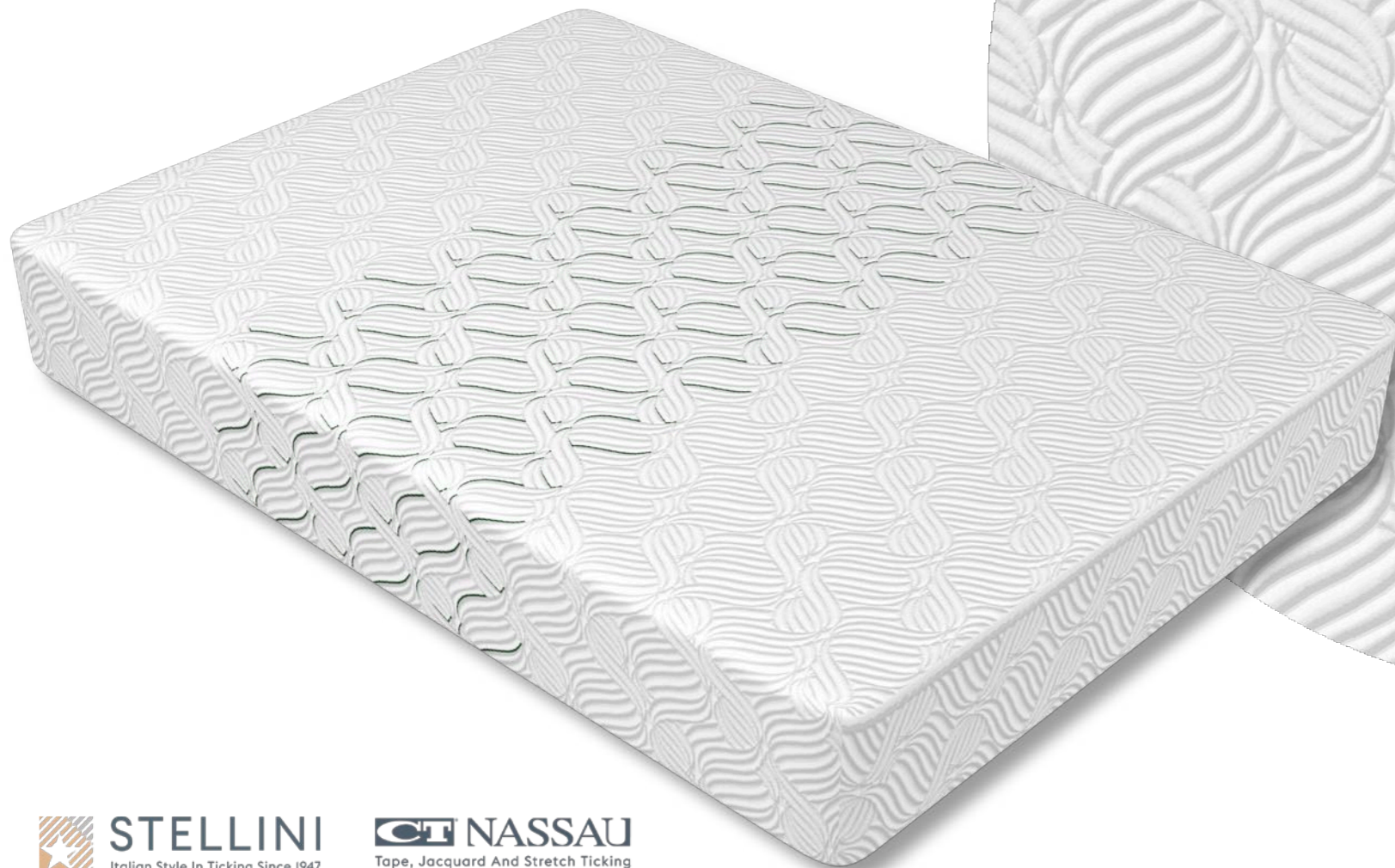


**STELLINI**  
Italian Style In Ticking Since 1947

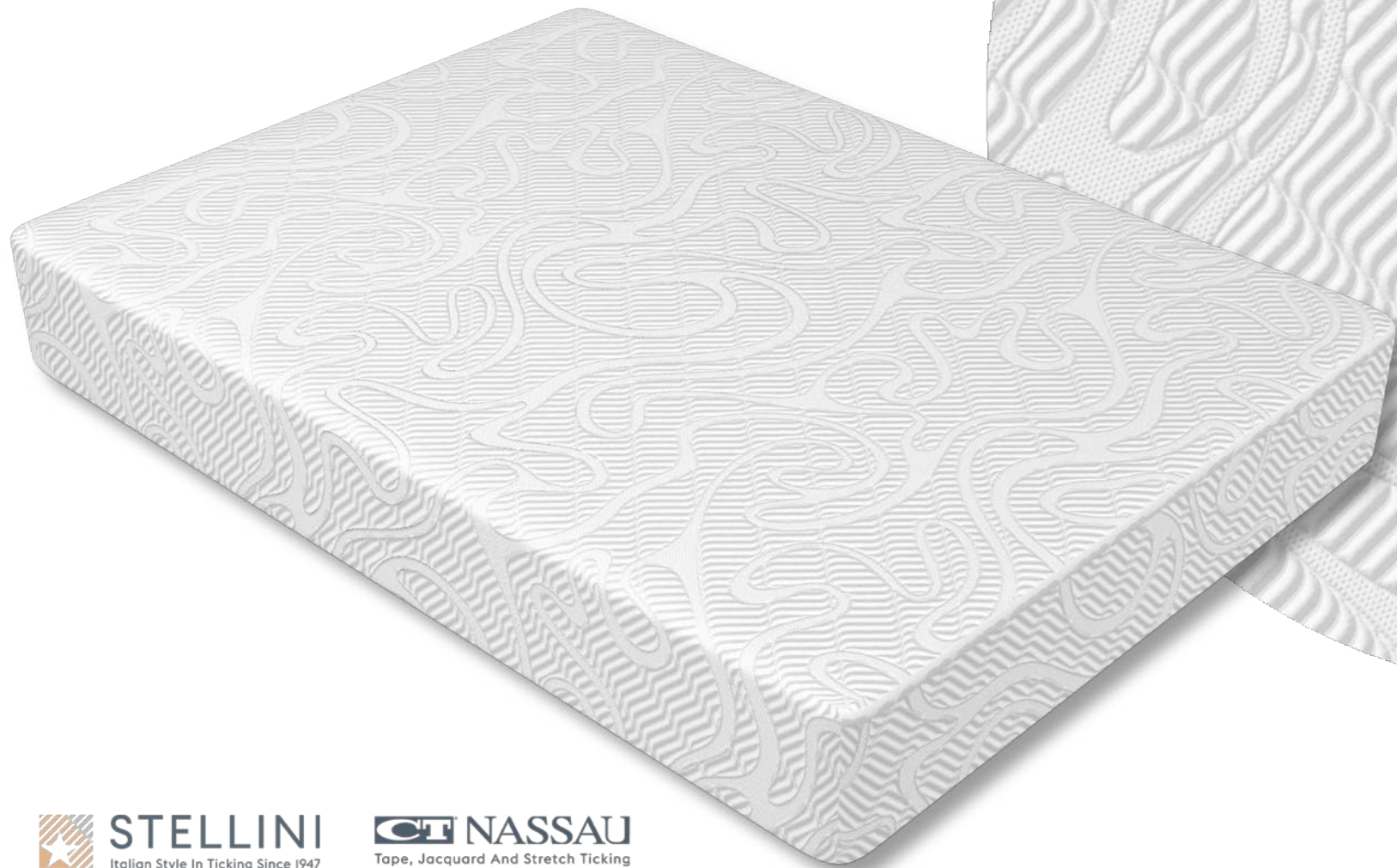
**CT NASSAU**  
Tape, Jacquard And Stretch Ticking

MATRESS PANEL - Ma10633  
recyten400hb230 - 4-3

MATRESS PANEL - Ma10629  
recyten400hb230 - 2-3



MATRESS PANEL - Ma10630  
recyten400hb230 - 3-6



DISPONIBILE  
ANCHE IN:



# Restore Energy

TECNOLOGIA RESTORE

SCOPRI DI  
PIÙ QUI:



**RESTORE<sup>2</sup>**

MATRESS PANEL - mo1797 CelliantD45ML1p  
938-14



**STELLINI**  
Italian Style In Ticking Since 1947

**CT NASSAU**  
Tape, Jacquard And Stretch Ticking

[stellinigroup.com](http://stellinigroup.com)

[ctnassau.com](http://ctnassau.com)



# Effetto Fresco

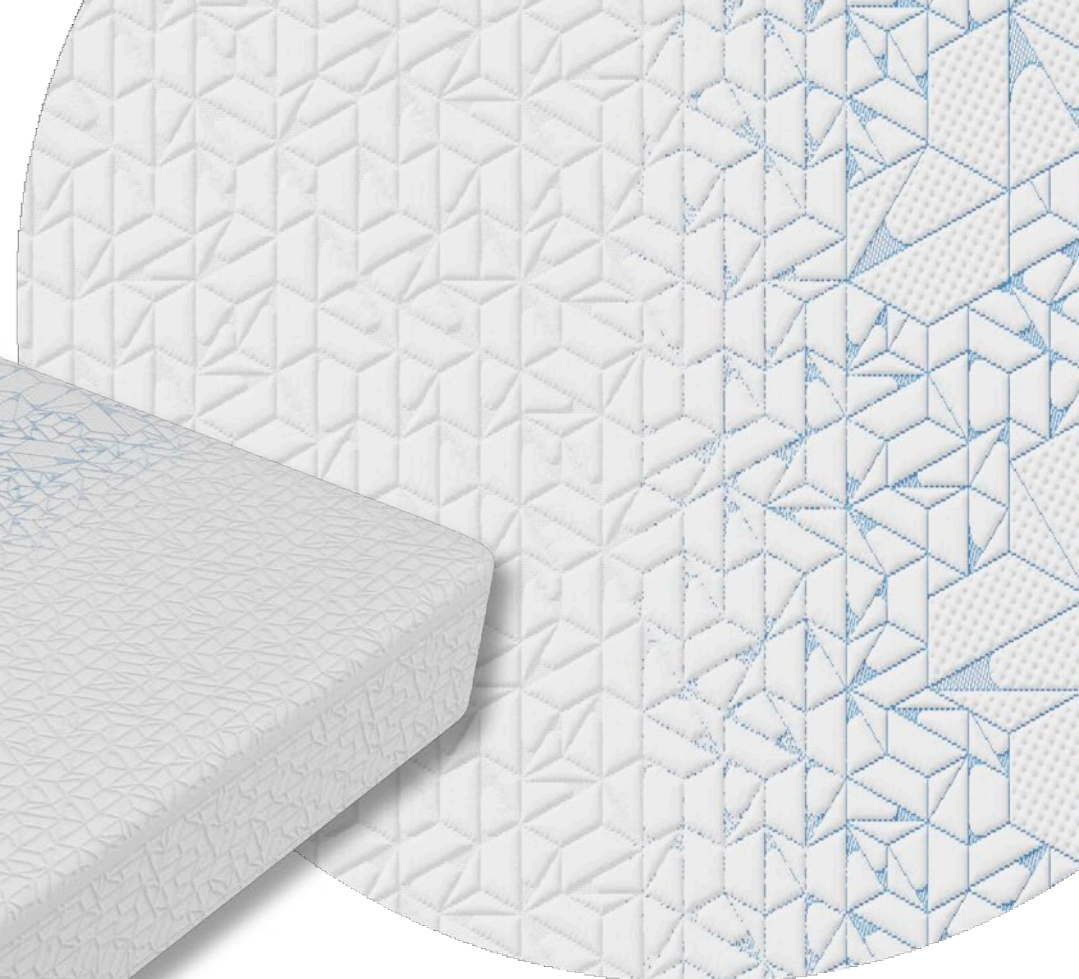
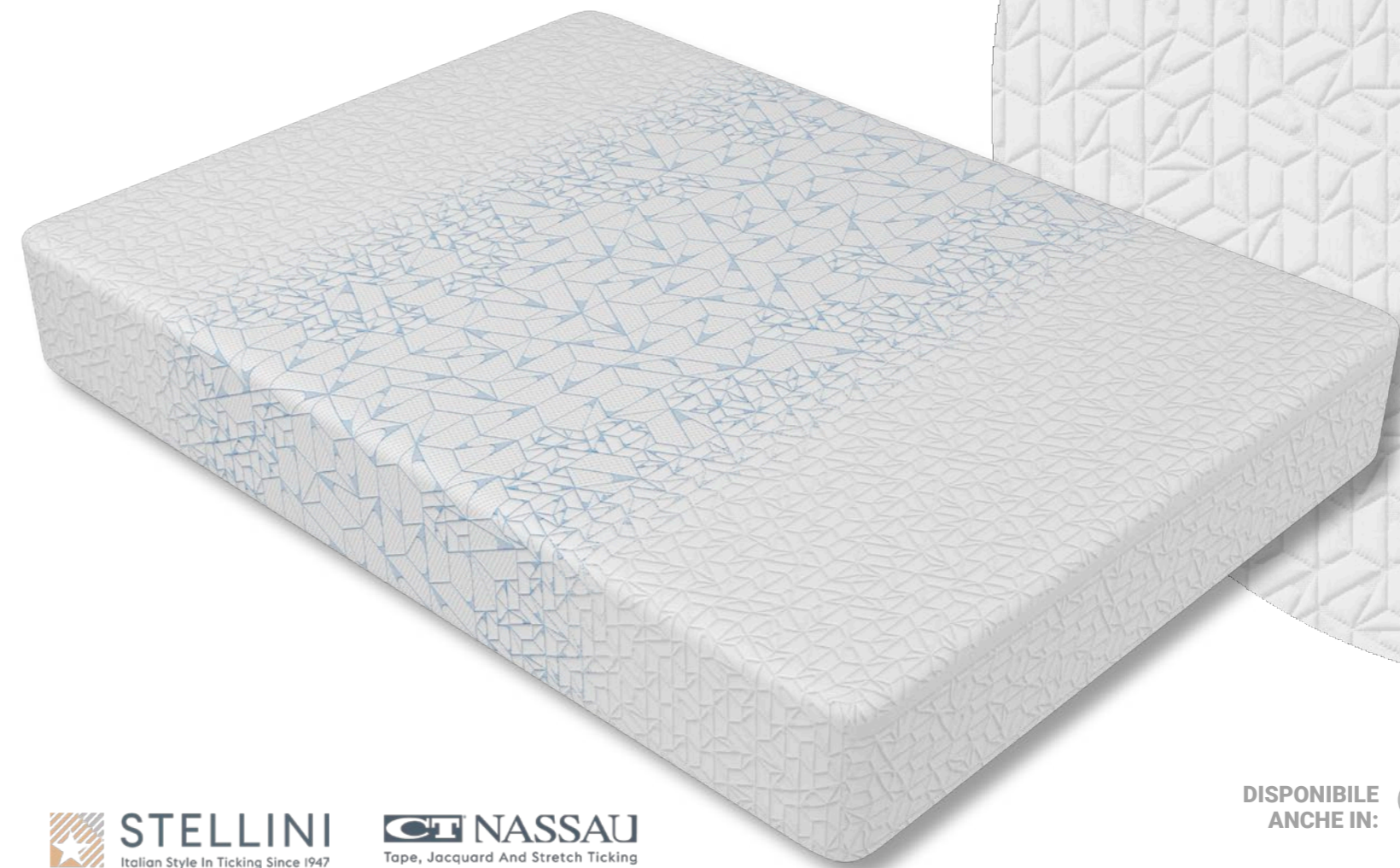
**FRECC! TOCCO RINFRESCANTE**

SCOPRI DI PIÙ QUI:



STELLINI  
**Frecc!**

MATRESS PANEL - Ma10579  
tempel350h230 - 2-1



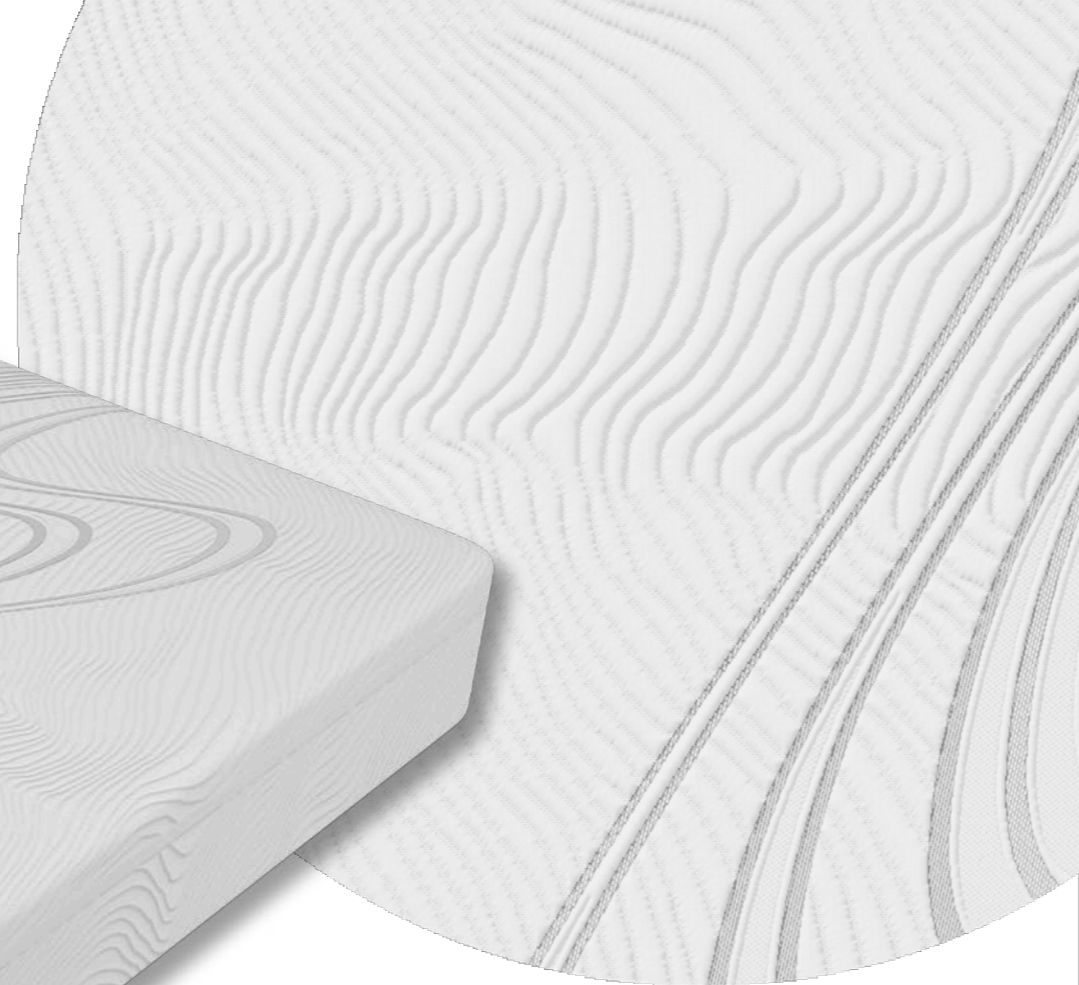
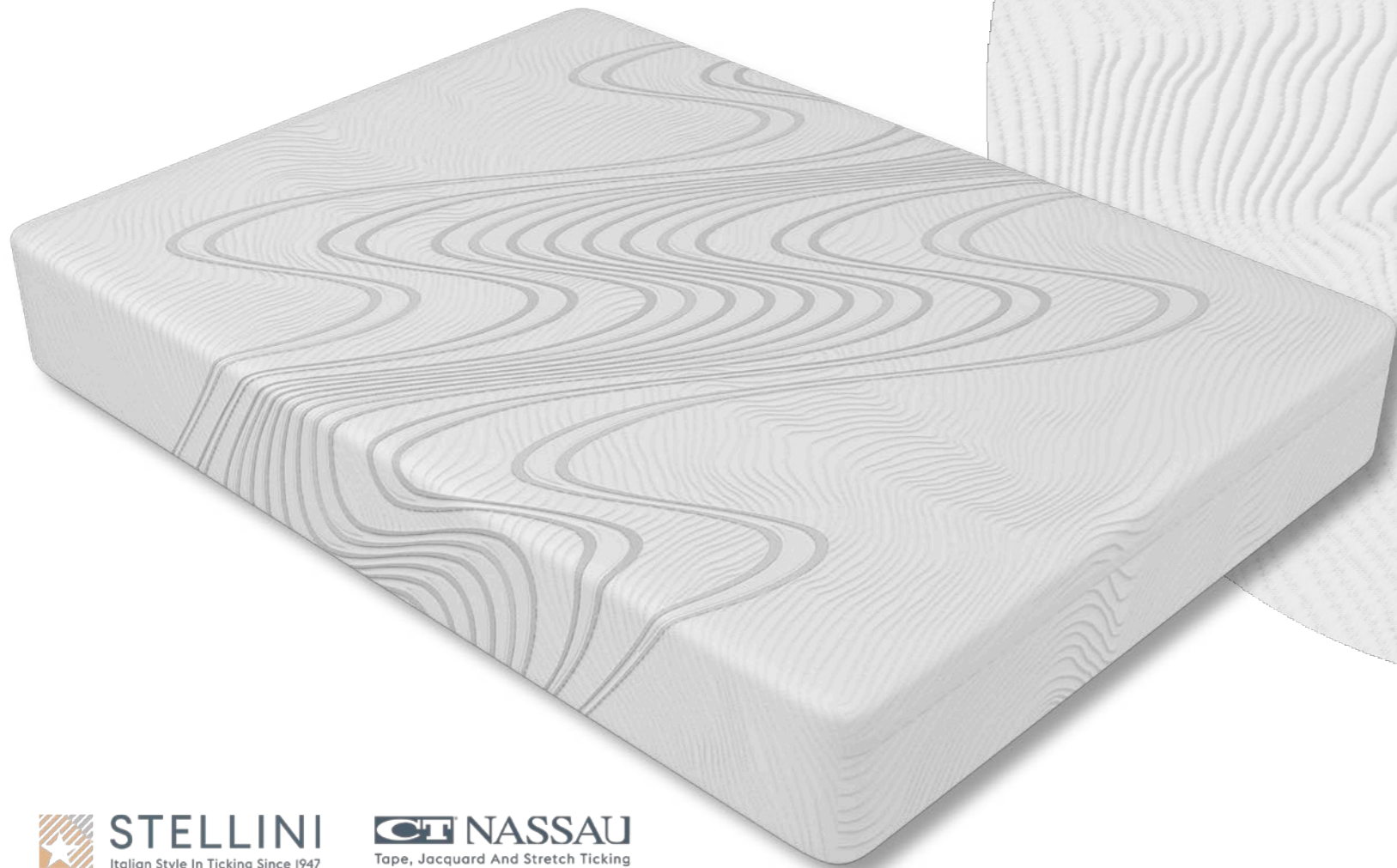
 **STELLINI**  
Italian Style In Ticking Since 1947

 **NASSAU**  
Tape, Jacquard And Stretch Ticking

DISPONIBILE ANCHE IN:  
● 2-6

STELLINI  
**Frecc!**

MATRESS PANEL - Ma10552  
tempel350h230 - 1-6

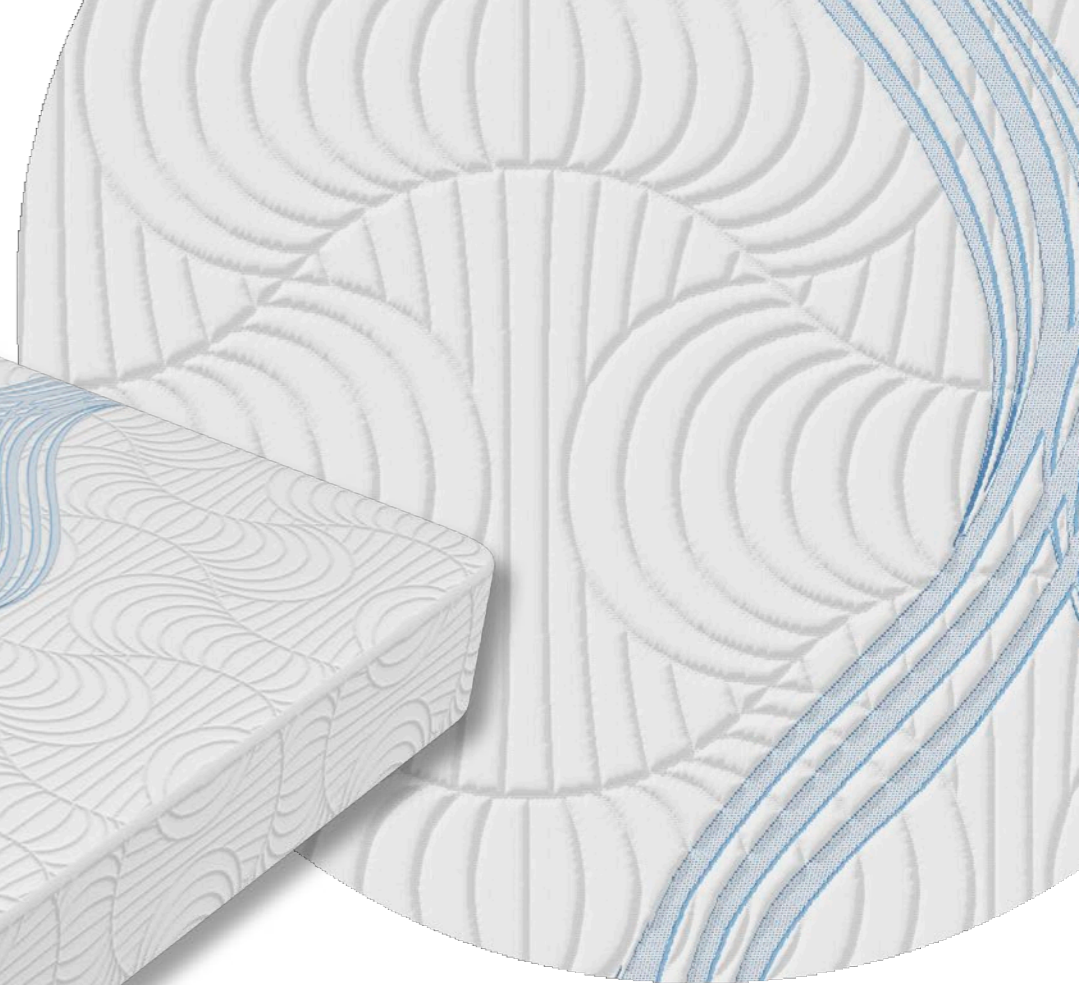
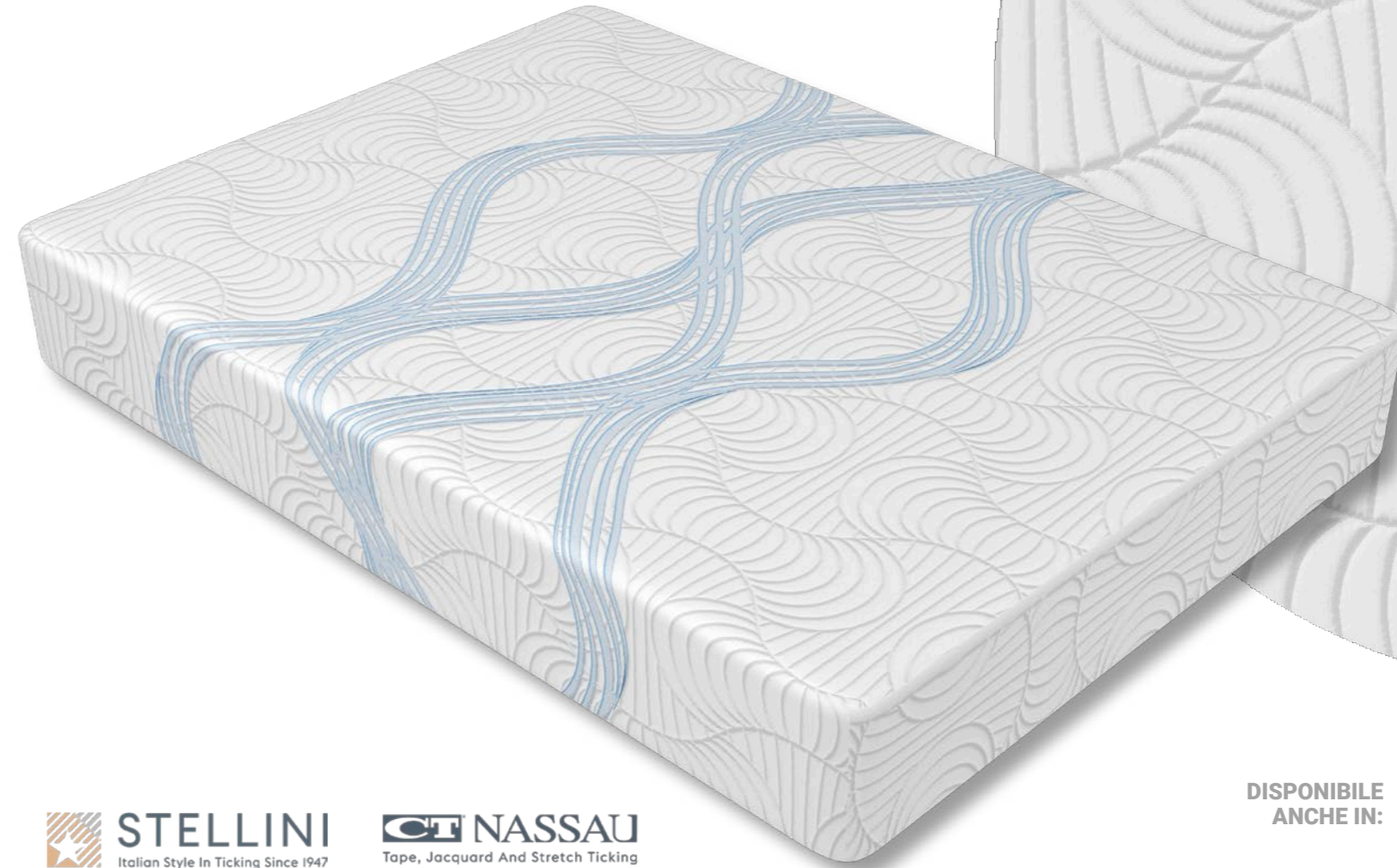


DISPONIBILE  
ANCHE IN:

 **STELLINI**  
Italian Style In Ticking Since 1947

 **CT NASSAU**  
Tape, Jacquard And Stretch Ticking

MATRESS PANEL - Ma10568  
tempel500h230 - 1-1



DISPONIBILE  
ANCHE IN:

 **STELLINI**  
Italian Style In Ticking Since 1947

 **CT NASSAU**  
Tape, Jacquard And Stretch Ticking



# Pillfresh

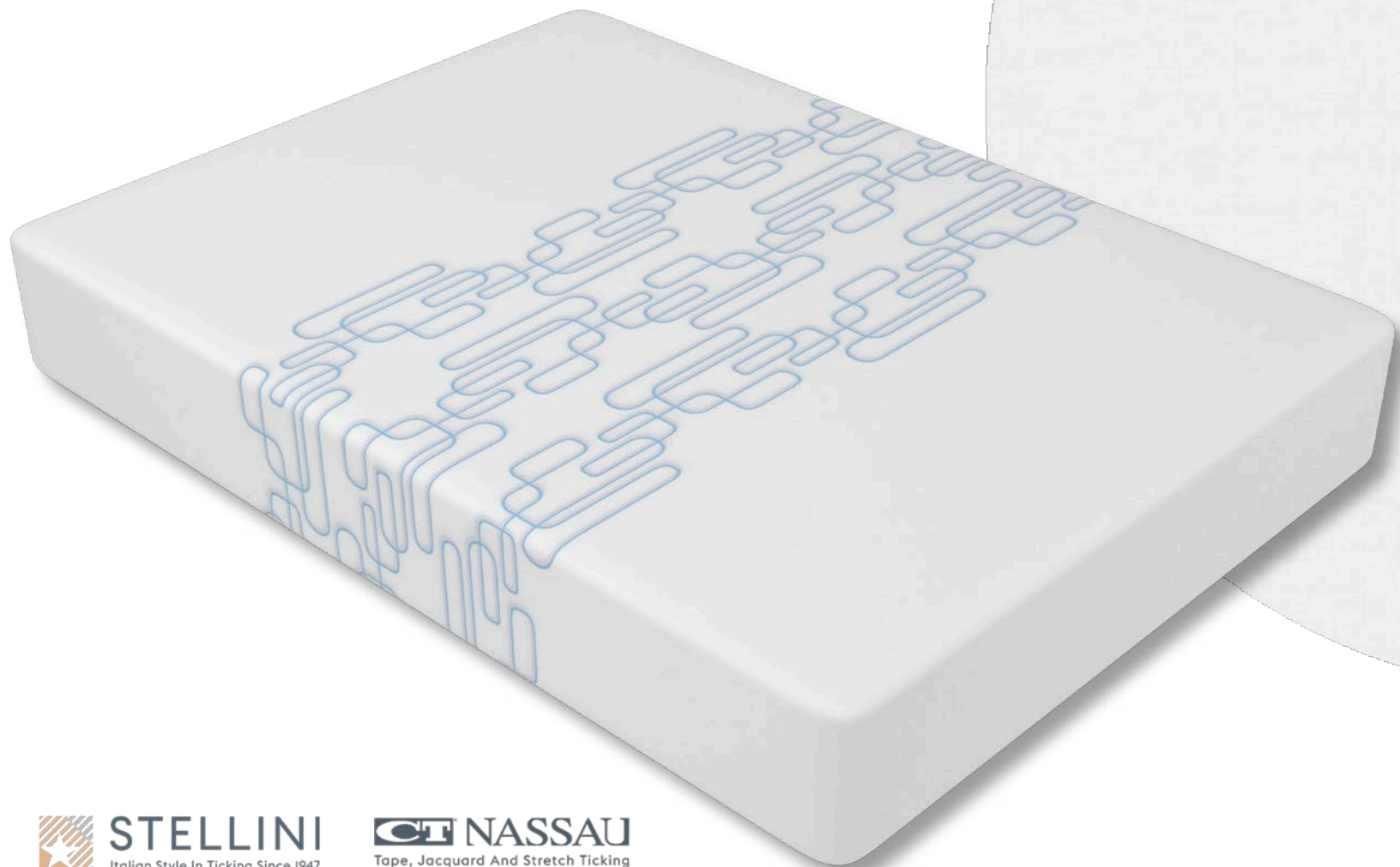
**PILLING BASSO, ALTA DEFINIZIONE +*TOCCO RINFRESCANTE***

- Alta resistenza al pilling
- "Risoluzione HD": migliore definizione del disegno
- Mano setosa
- Elastico, alta vestibilità

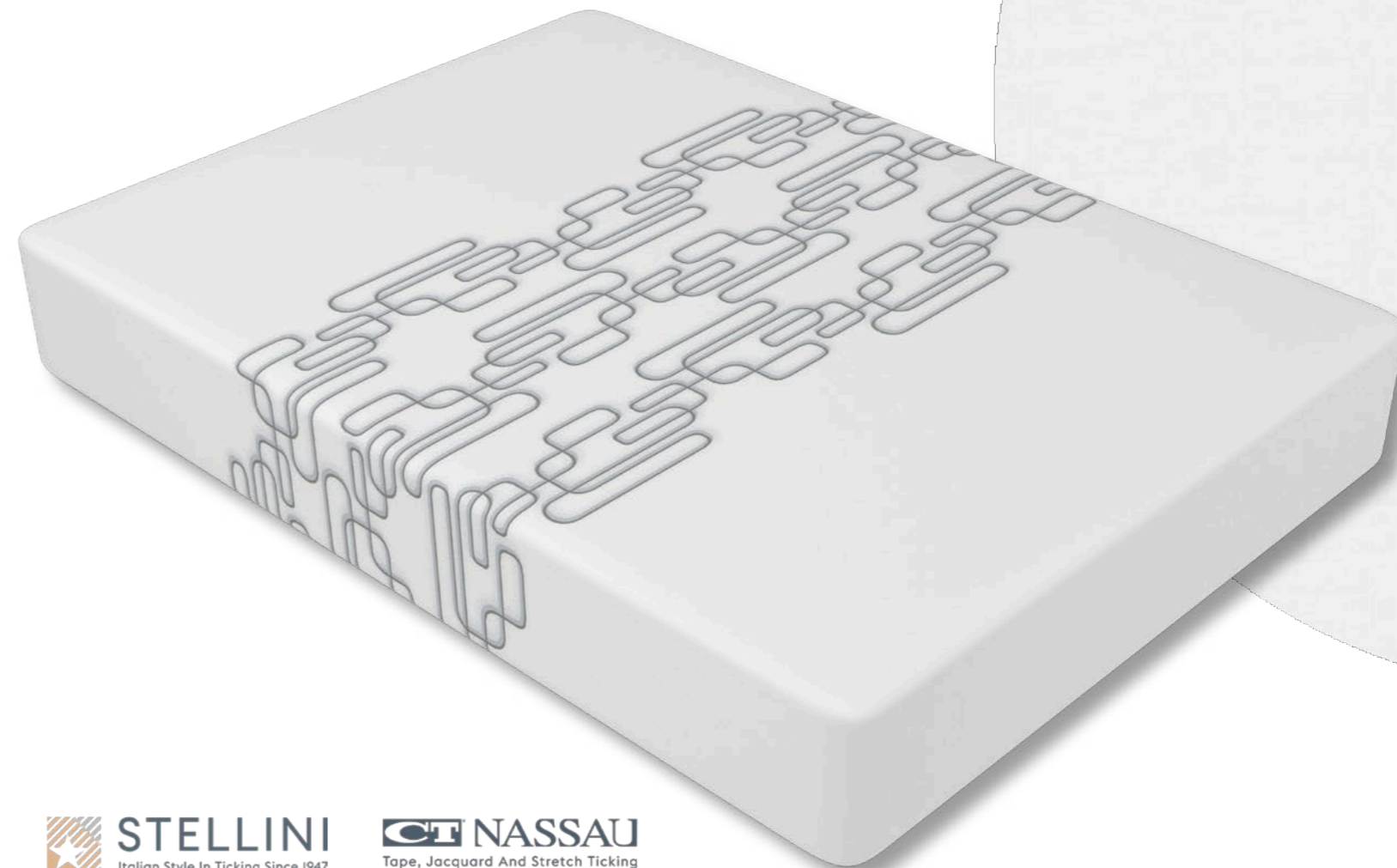
**SCOPRI DI  
PIÙ QUI:**



MATRESS PANEL - Ma10567  
pillfresh503 - 3-1



MATRESS PANEL - Ma10567  
pillfresh503 - 3-6





# Pillfree

## PILLING BASSO, ALTA DEFINIZIONE

- Alta resistenza al pilling
- "Risoluzione HD": migliore definizione del disegno
- Mano setosa
- Elastico, alta vestibilità

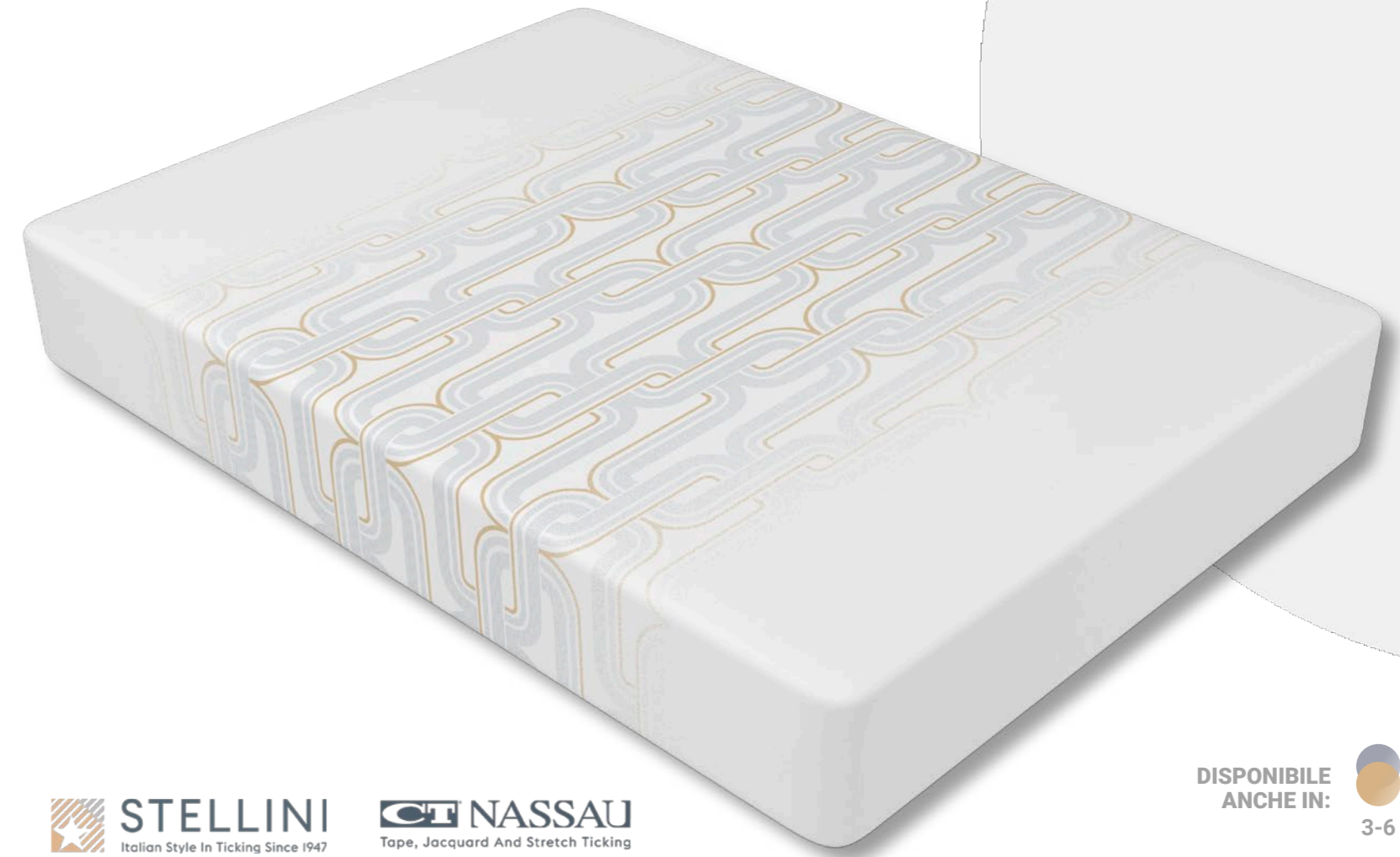
SCOPRI DI PIÙ QUI:



DISPONIBILE ANCHE COME:



MATRESS PANEL - Ma10581  
pillfree0304 - 3-7



DISPONIBILE ANCHE IN:



3-6 **Pillfree**

MATRESS PANEL - Ma10584  
pillfree0301 - 20-61



MATRESS PANEL - Ma10591  
pillfree0301 - 21-6



 **STELLINI**  
Italian Style In Ticking Since 1947

 **NASSAU**  
Tape, Jacquard And Stretch Ticking

DISPONIBILE  
ANCHE IN:  20-6

**Pillfree** 

 **STELLINI**  
Italian Style In Ticking Since 1947

 **NASSAU**  
Tape, Jacquard And Stretch Ticking

DISPONIBILE  
ANCHE IN:  21-5

**Pillfree** 



**CONTATTI**

**CONTATTI  
PER MAGGIORI  
INFORMAZIONI**

## **CONTATTI**

**Europa | Italia | Tessuto**  
Stellini Textile Srl  
T +39 0331 072501  
info@stellinigroup.com

**Europa | Italia | Filato**  
Stellini Tech Srl  
T +39 0331 072501  
info@stellinigroup.com

**USA**  
Continental Ticking  
Corporation of America  
T +1 336 570 0091  
salesmgt@ctnassau.com

**Russia**  
Stellini.RU  
Outside RU: T +7 4932 57 48 24  
Inside RU: T 8 800 550 19 47  
infoweb@stellinigroup.ru

[stellinigroup.com](http://stellinigroup.com)



[stellinigroup.com](http://stellinigroup.com)