

# Astra

COLLECTION



STELLINI

Italian Style In Ticking Since 1947



**STELLINI**

Italian Style In Ticking Since 1947



Copyright ©Stellinigroup 2024.  
All rights reserved. No part of this of this  
document without prior written authorization.

WELCOME TO

*Astra*

COLLECTION

[stellinigroup.com](http://stellinigroup.com)

# Facing the ordinary for the extraordinary

The term derives from the Latin expression, 'Per aspera sic itur ad astra' :often used as a motto or incentive, which literally means: "through hardships to the stars." This motto sums up the state of mind of our society today, between fast digital and technological development, plus the climate crisis we are facing.

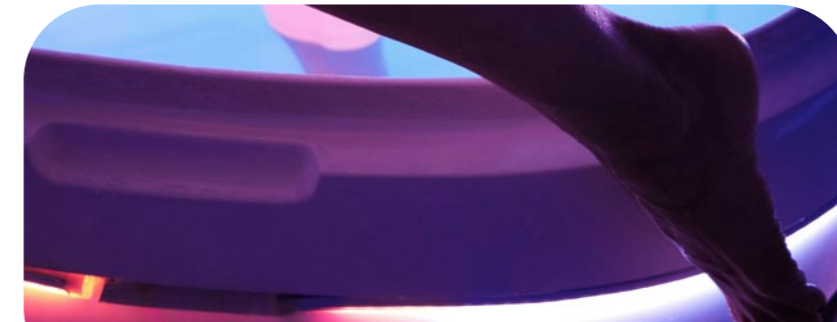
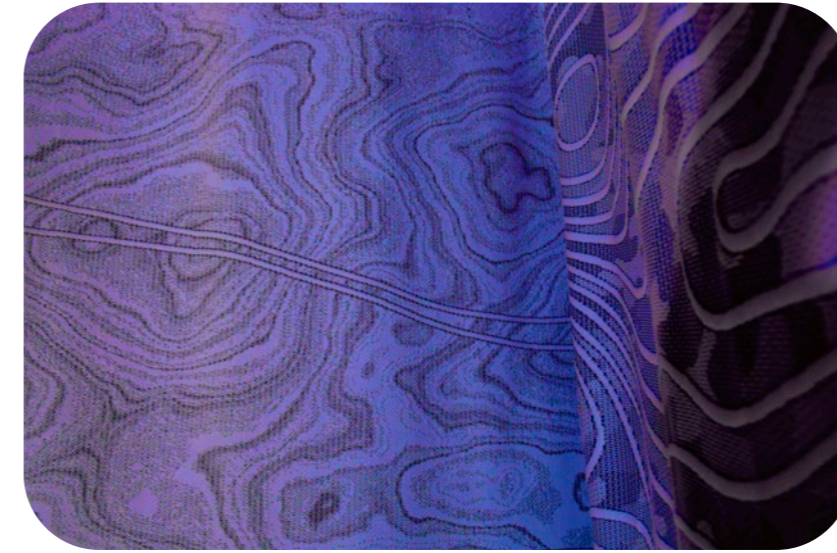


## ABOUT THE INFLUENCES

Astra recalls the major trends for 2025/2026 with a focus on a common theme: the search for the unknown through futuristic shapes, shaded colours, technology and innovation developments through new market trends: artificial intelligence, metaverse, 3D design, ethereal aesthetics, almost extraterrestrial.

At Astra, we look up to the vast night sky for inspiration: the fascination of the unknown in abstract and unpredictable shapes and depth interplay whets the consumer's appetite for wonder and exploration.

**Astra is a sub-collection of Stellini Group's Brera Collection. Discover our collection on [stellinigroup.com](https://stellinigroup.com)**



## TECHNO-IMPRINT

The Pixelated Style And Holographic Finishes Produce Fingerprint-like Patterns, Combining "digital" And "human"

Contact us for a complete project with coordinated fabrics for bedding and home accessories!

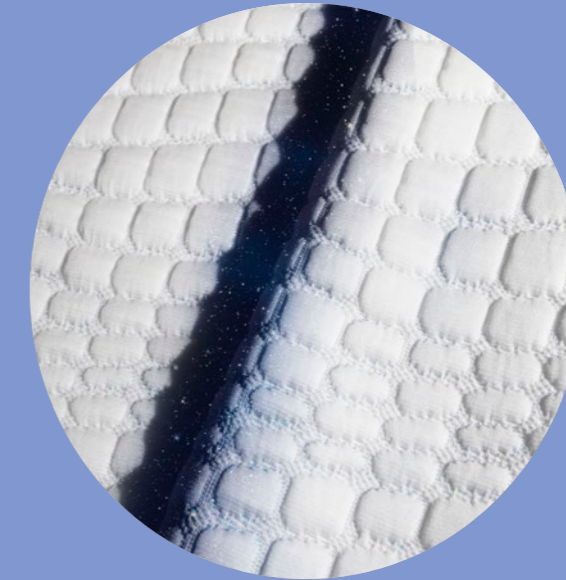
## COLOR SELECTION



### KEY FOCUSES OF ASTRA SUB-COLLECTION

- ALTERNATIVE  
"NEW GENERATION" STYLE
- SUSTAINABLE FOCUS
- EXPLORING ABSTRACT DESIGNS

## Design Previews

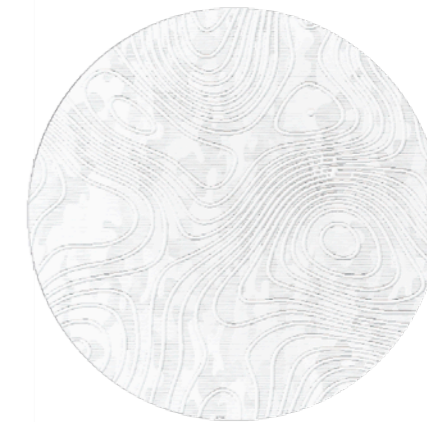


# Jacquard Borders

Jacquard Mattress Borders with geometrical combinations



MATRESS PANEL - Ma10391  
pl240b220 - 18-6

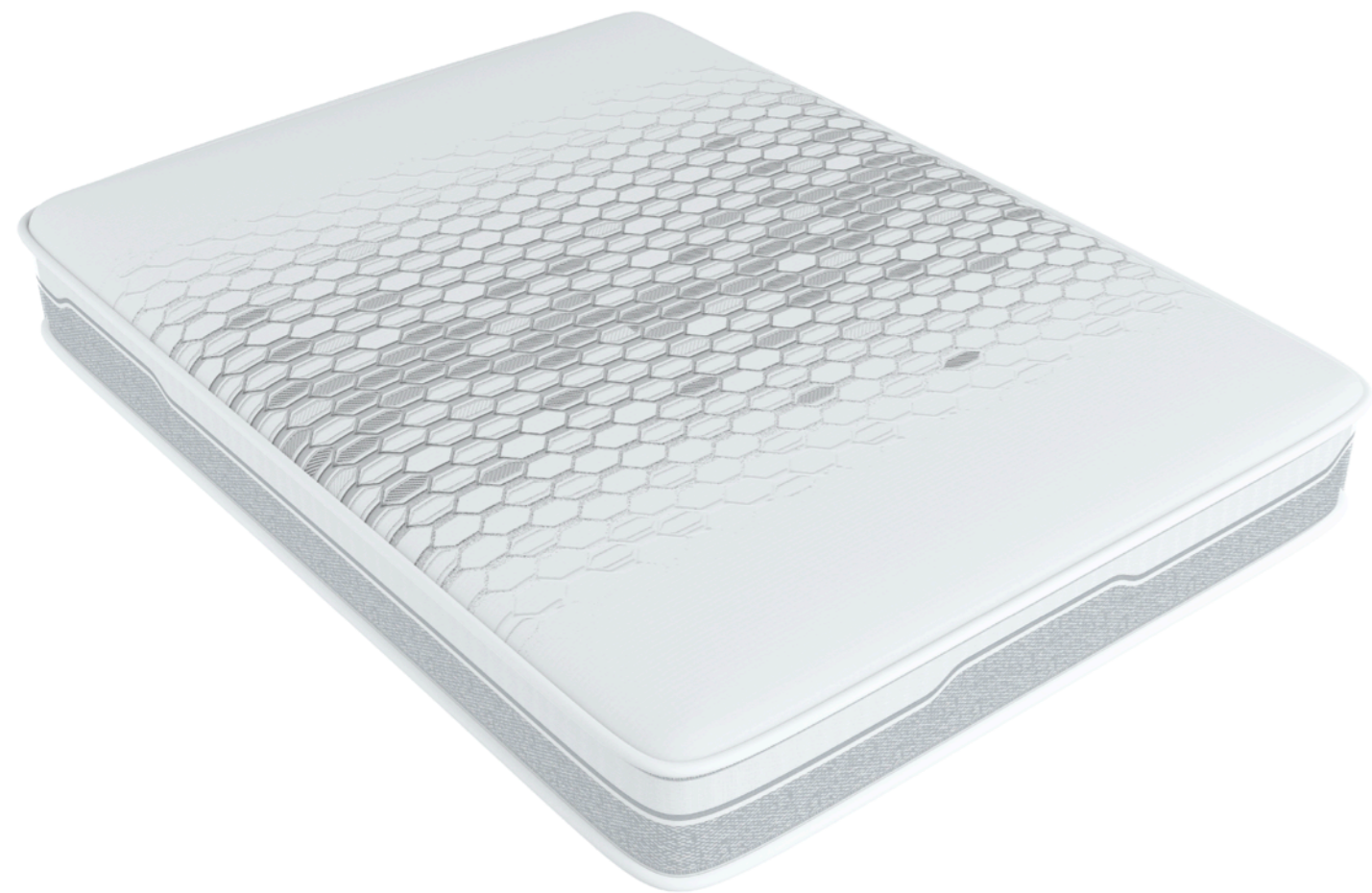


BORDER - Dj24492  
Fasciae1314h25 - 11-6

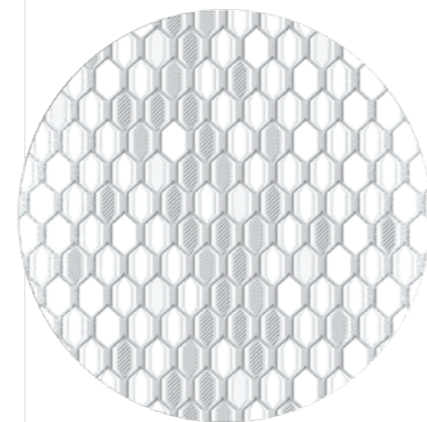


 **STELLINI**  
Italian Style In Ticking Since 1947

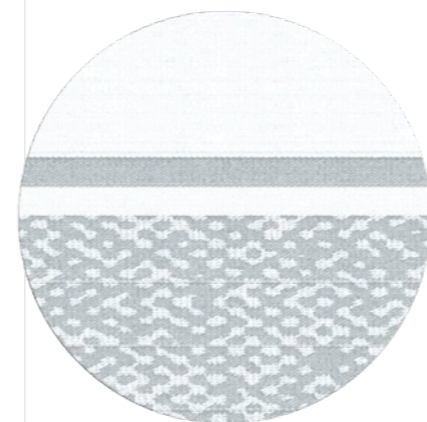
 **NASSAU**  
Tape, Jacquard And Stretch Ticking



MATRESS PANEL - Me10468  
ewkmpecv270h230 - 2-6



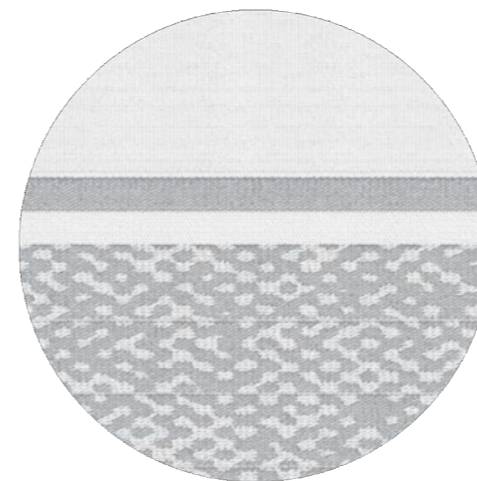
BORDER - Dj24489  
Fasciael130h25 - 31-61



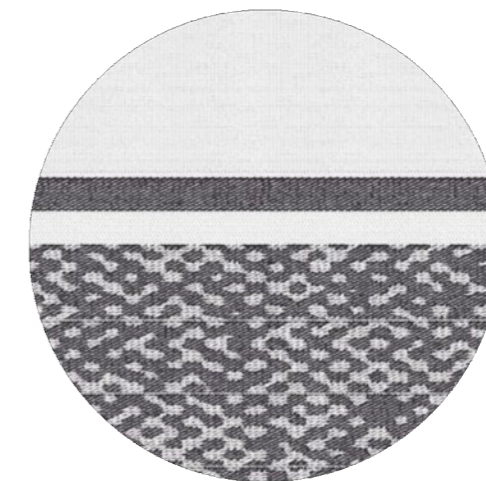
ctnassau.com

stellinigroup.com

BORDER - Dj24489  
Fasciael130h25 - 31-61

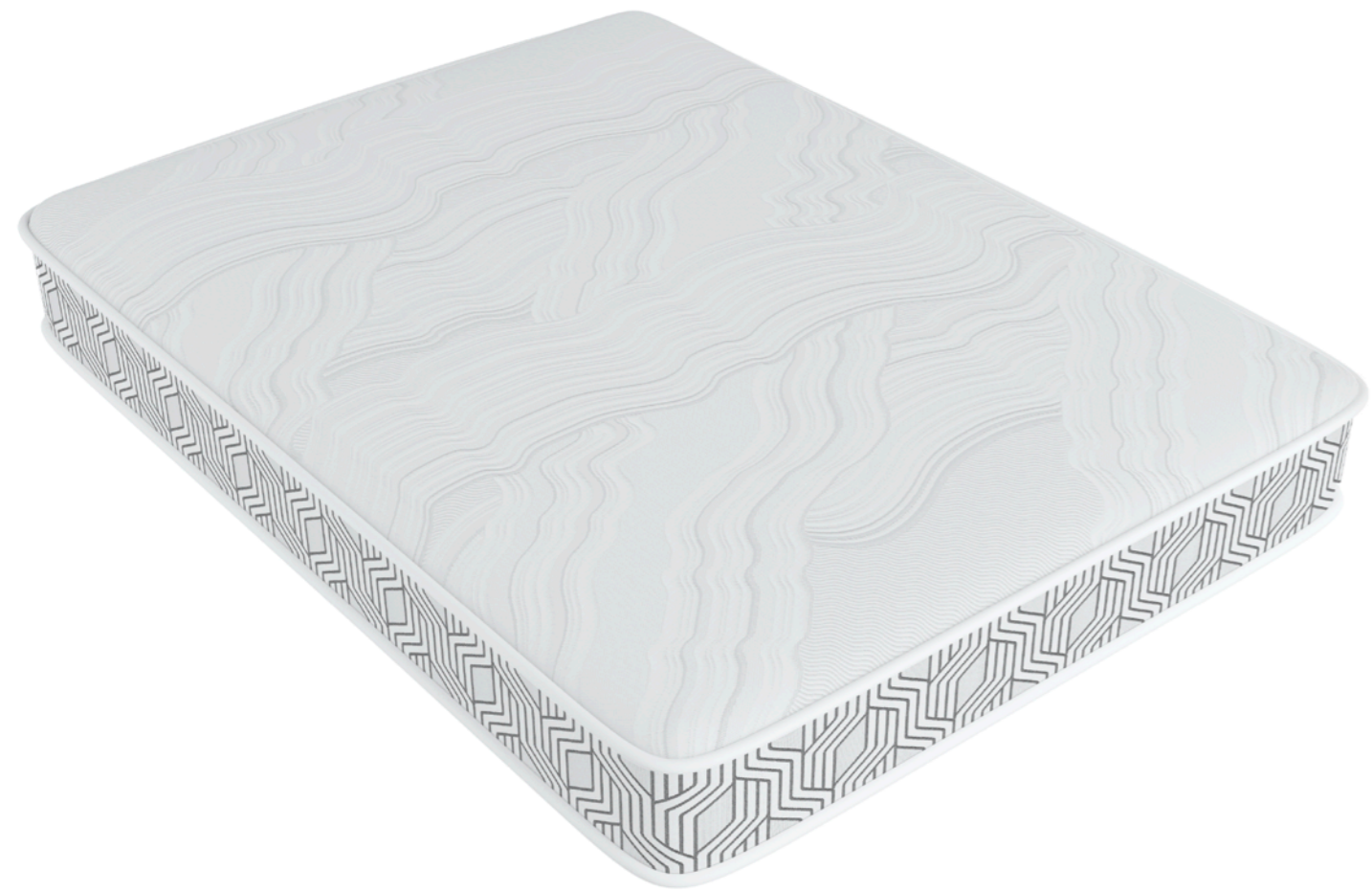


BORDER - Dj24489  
Fasciael130h25 - 31-6



BORDER - Dj24489  
Fasciael130h25 - 31-8





MATRESS PANEL - Ma10421  
pes180c220 - 291-0



BORDER - Dj24490  
FasciaeI314h25 - 10-61



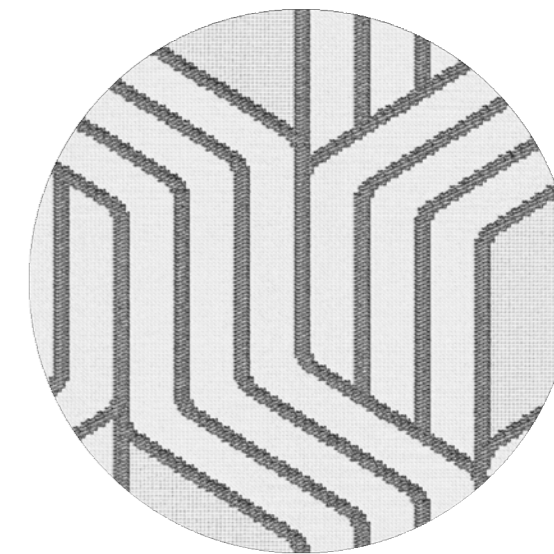
ctnassau.com

stellinigroup.com

BORDER - Dj24490  
FasciaeI314h25 - 10-6



BORDER - Dj24490  
FasciaeI314h25 - 10-61

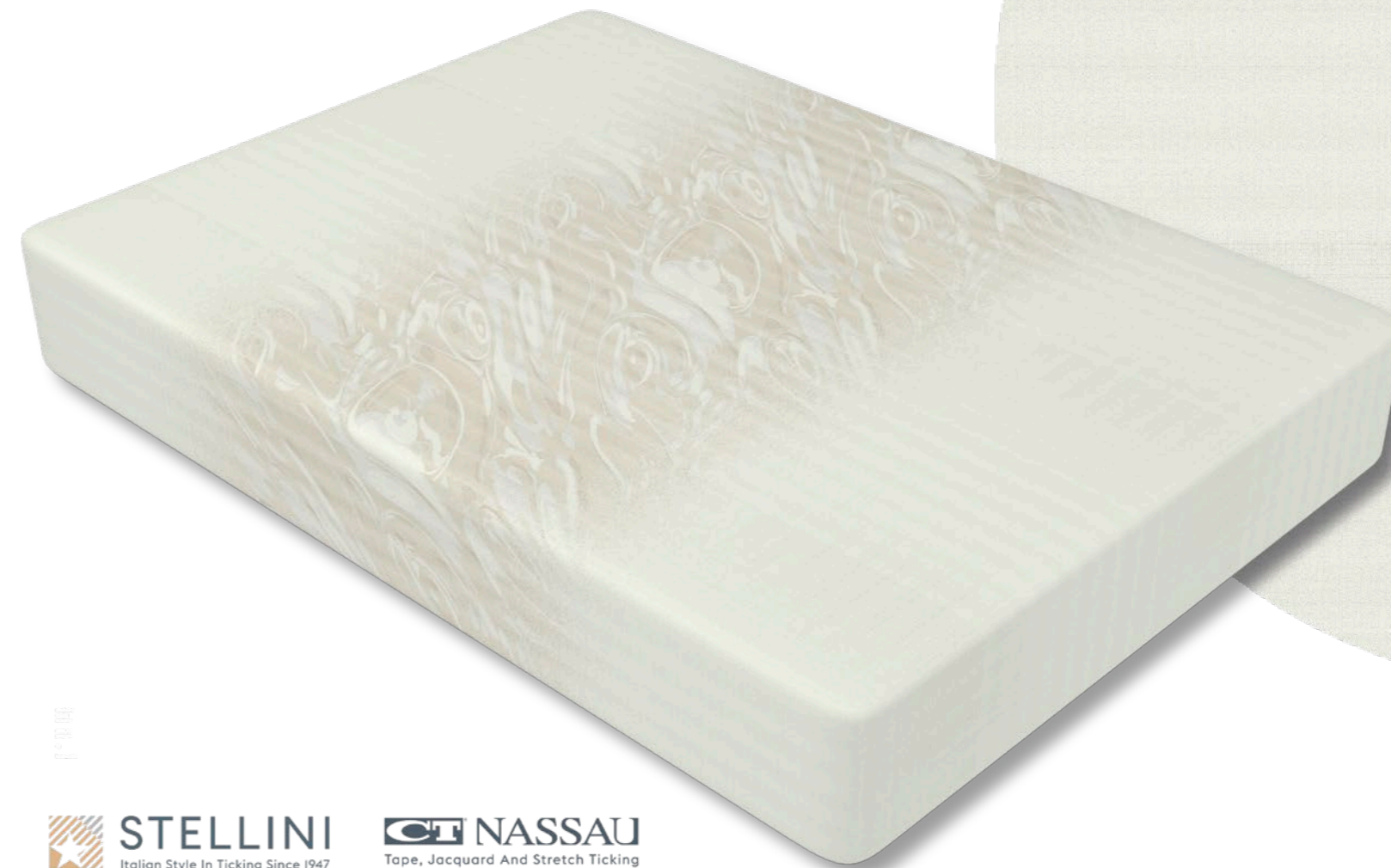




# Design District

**JACQUARD FABRICS**

MATRESS PANEL - Dg24477  
P5675dg-15-8



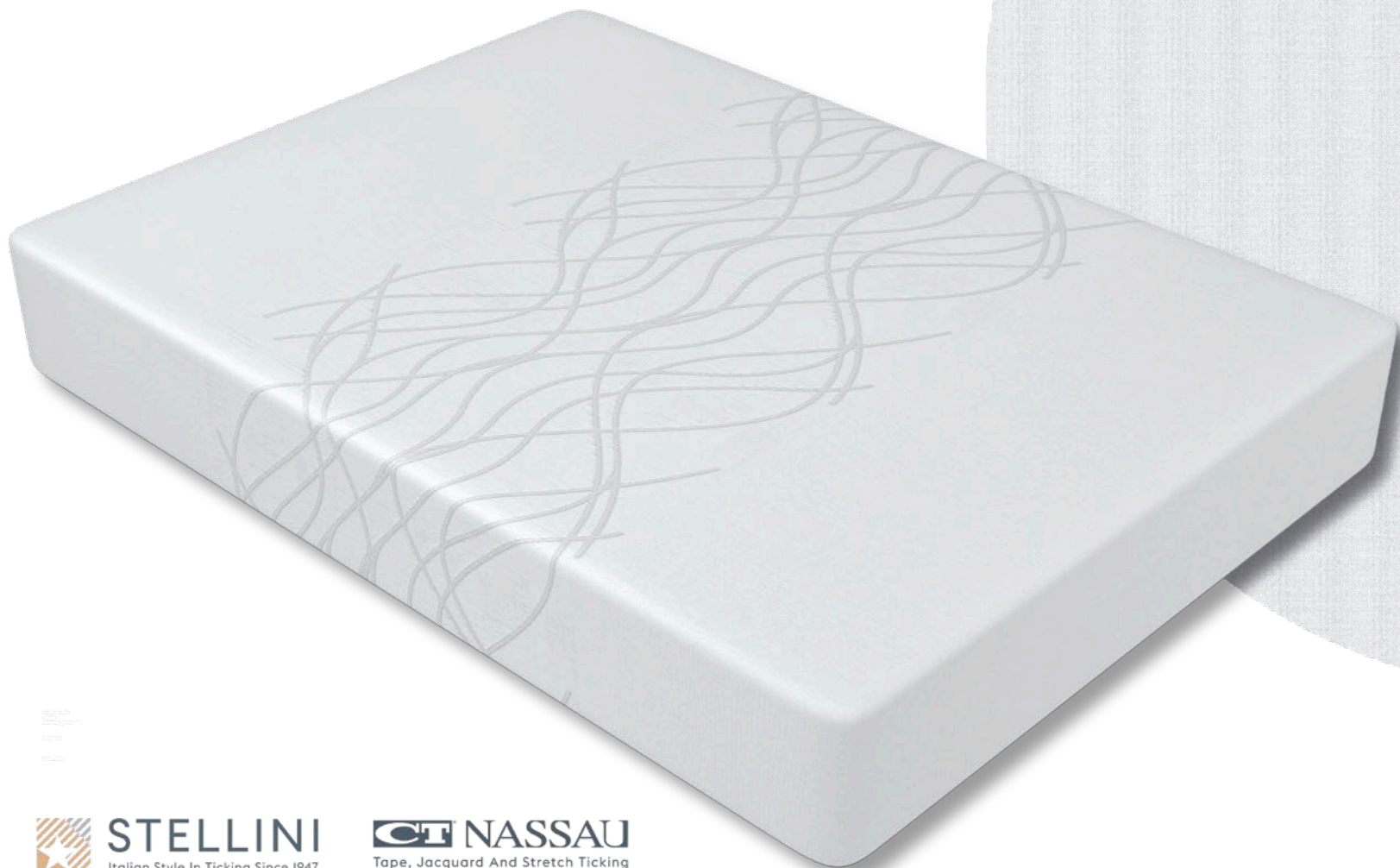
 **STELLINI**  
Italian Style In Ticking Since 1947

 **CT NASSAU**  
Tape, Jacquard And Stretch Ticking

[stellinigroup.com](http://stellinigroup.com)

[ctnassau.com](http://ctnassau.com)

MATRESS PANEL - Dj24499  
p5900-6-6



MATRESS PANEL - Dg24413  
p6066dg-13-6

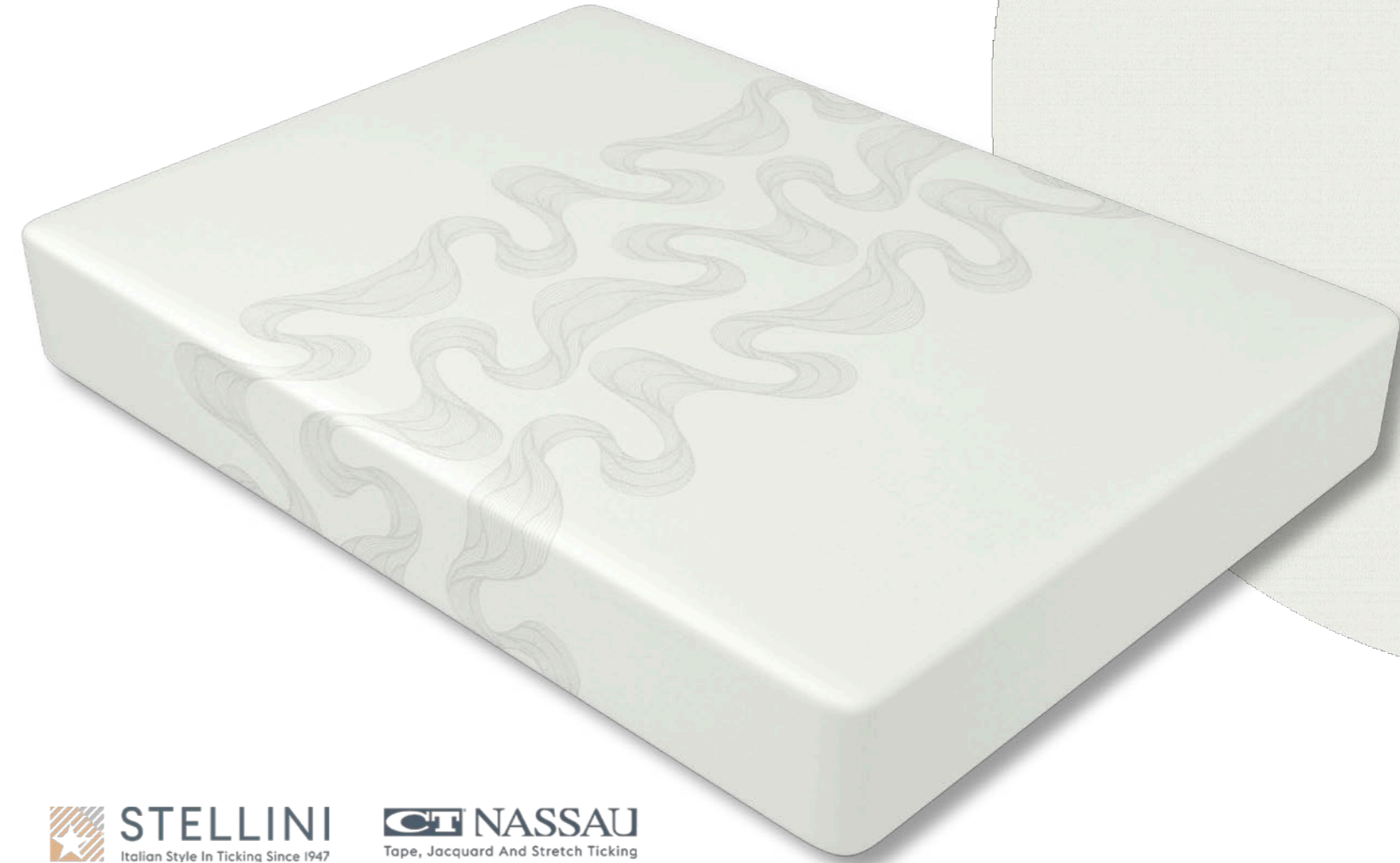


MATRESS PANEL - Dj24493

p6345 - 1-0

MATRESS PANEL - Dj24481

P6007 - 9-0



[stellinigroup.com](http://stellinigroup.com)

[ctnassau.com](http://ctnassau.com)



MATELASSÈ

[stellinigroup.com](http://stellinigroup.com)

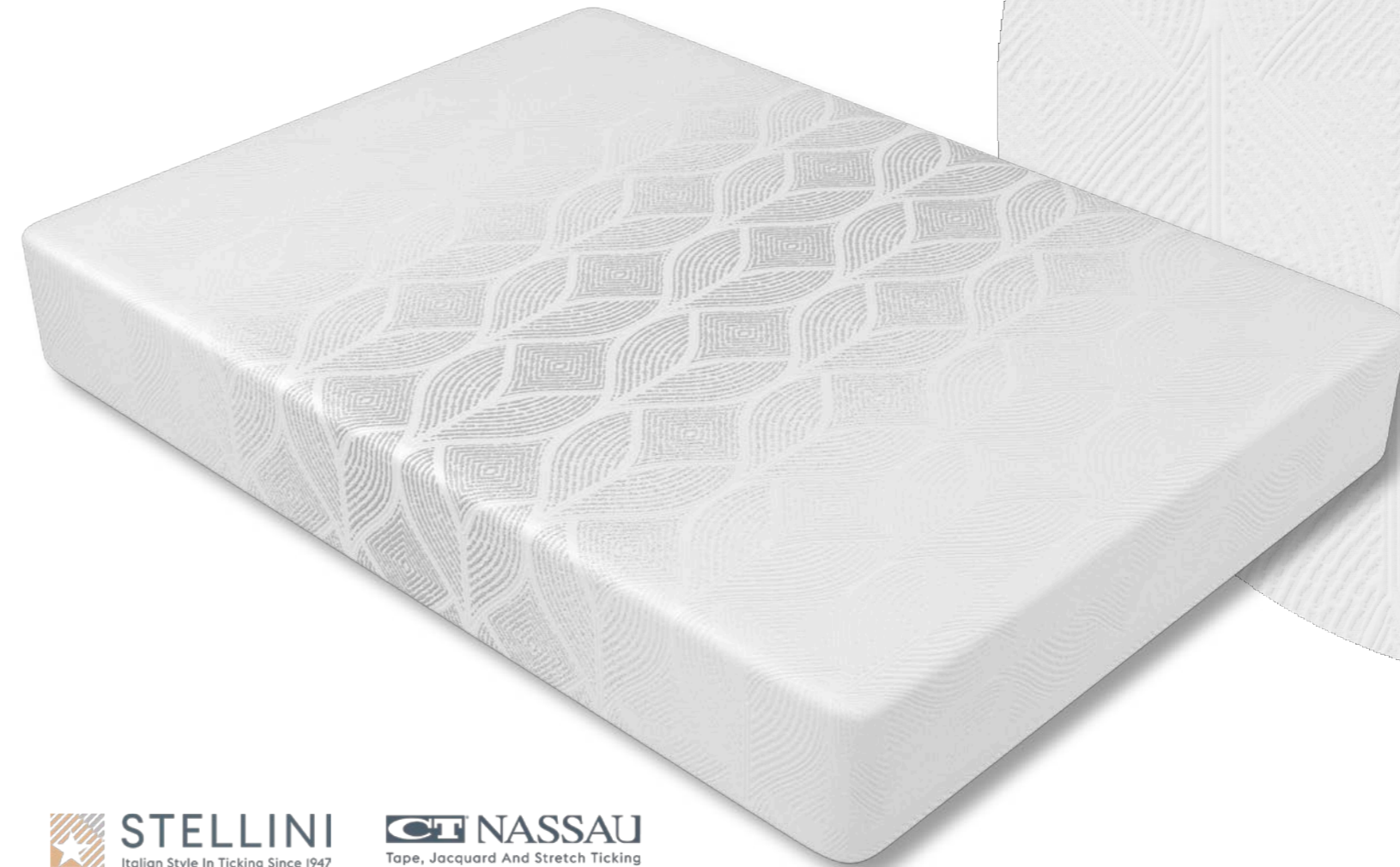
[ctnassau.com](http://ctnassau.com)



# Design District

KNITTED FABRICS

MATRESS PANEL - Ma10415  
pes180h220 - 99-6



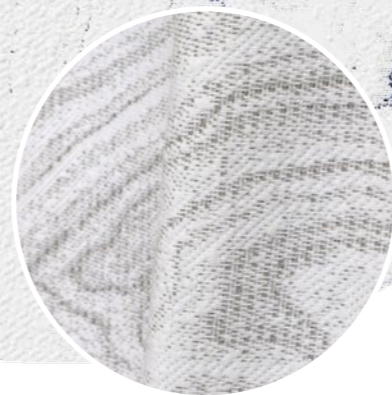
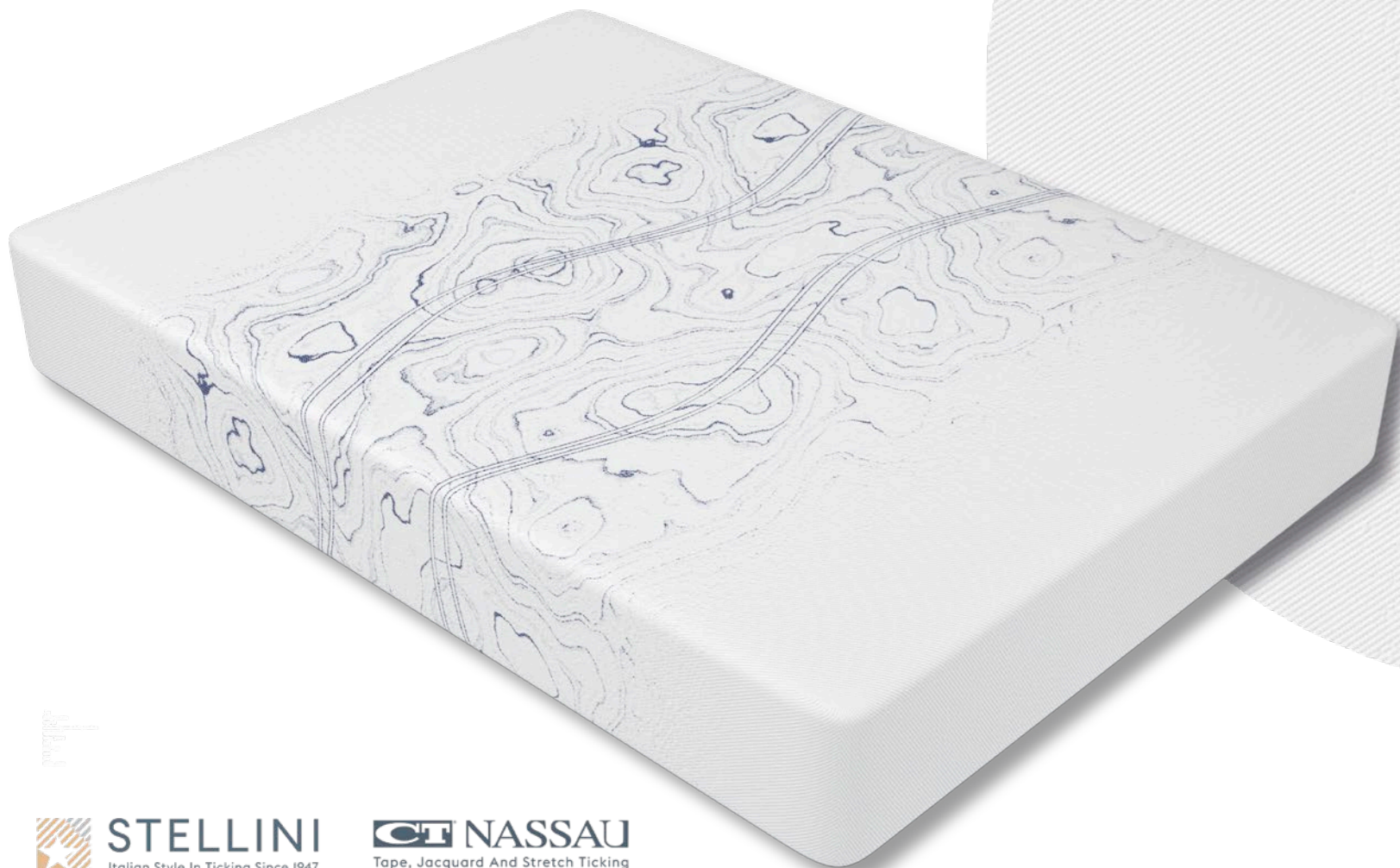
 **STELLINI**  
Italian Style In Ticking Since 1947

 **CT NASSAU**  
Tape, Jacquard And Stretch Ticking

[stellinigroup.com](http://stellinigroup.com)

[ctnassau.com](http://ctnassau.com)

MATRESS PANEL - Ma10393  
pl240b220 - 20-1



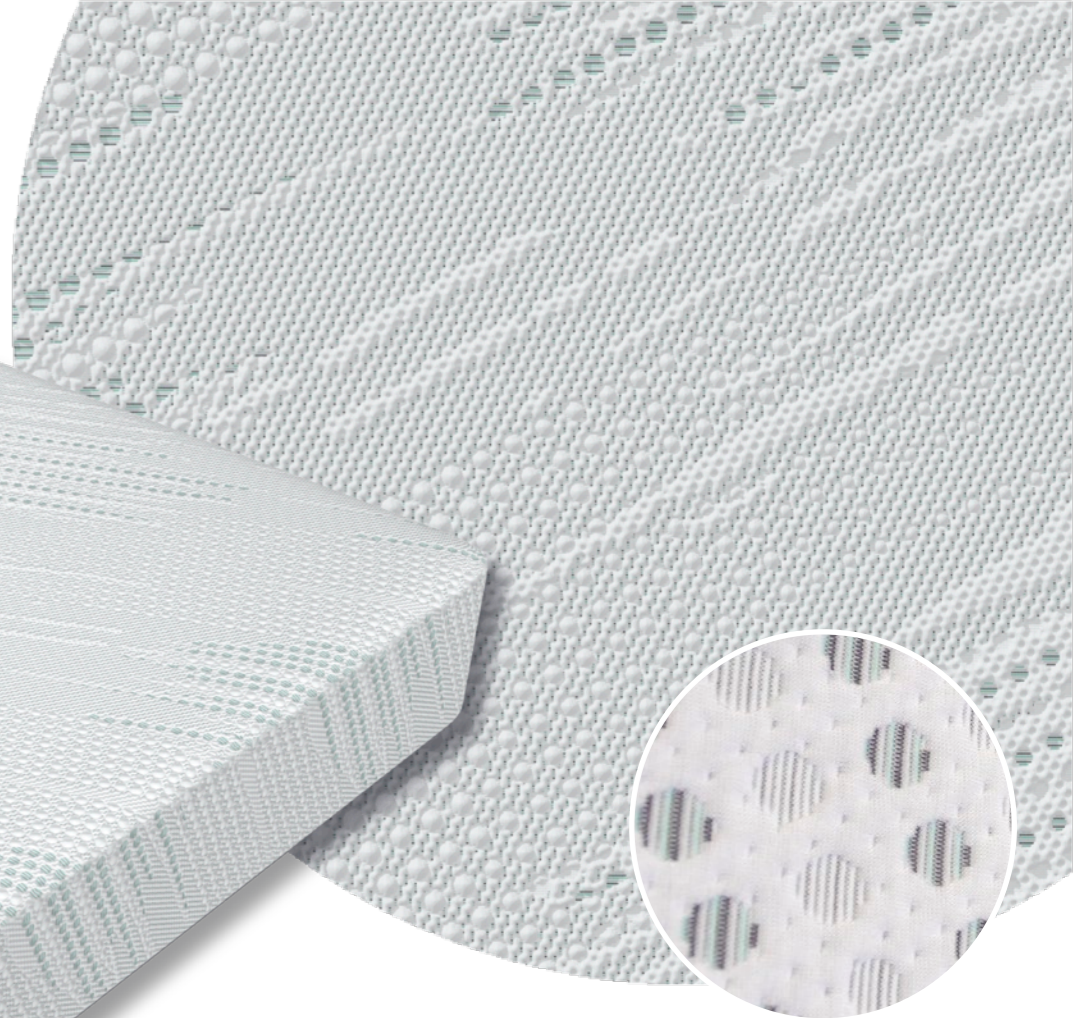
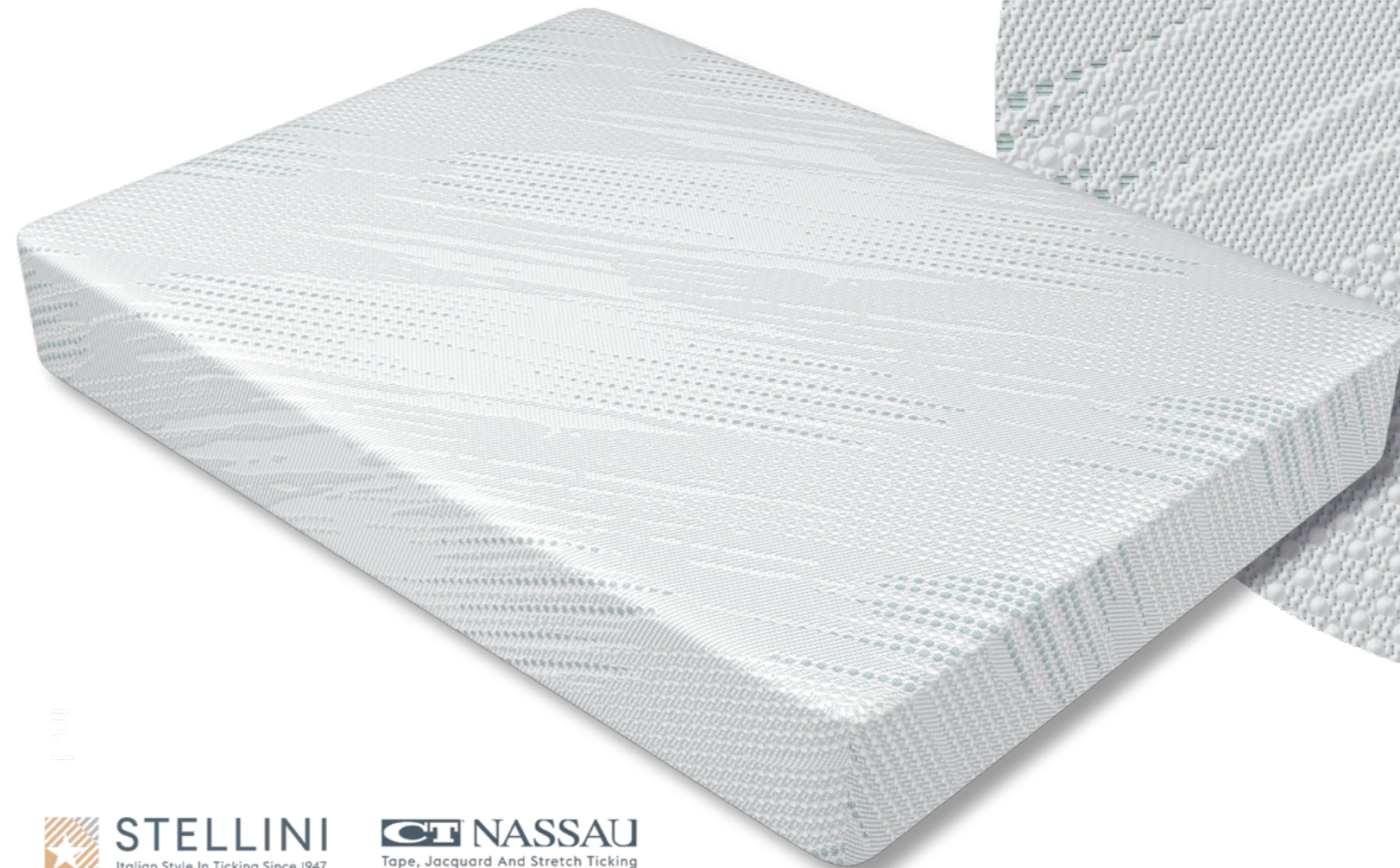
ALSO AVAILABLE IN:    
20-2 20-6



**STELLINI**  
Italian Style In Ticking Since 1947

**CT NASSAU**  
Tape, Jacquard And Stretch Ticking

MATRESS PANEL - Ma10394  
pl240b220-17-3



ALSO AVAILABLE IN:    
17-1 17-3



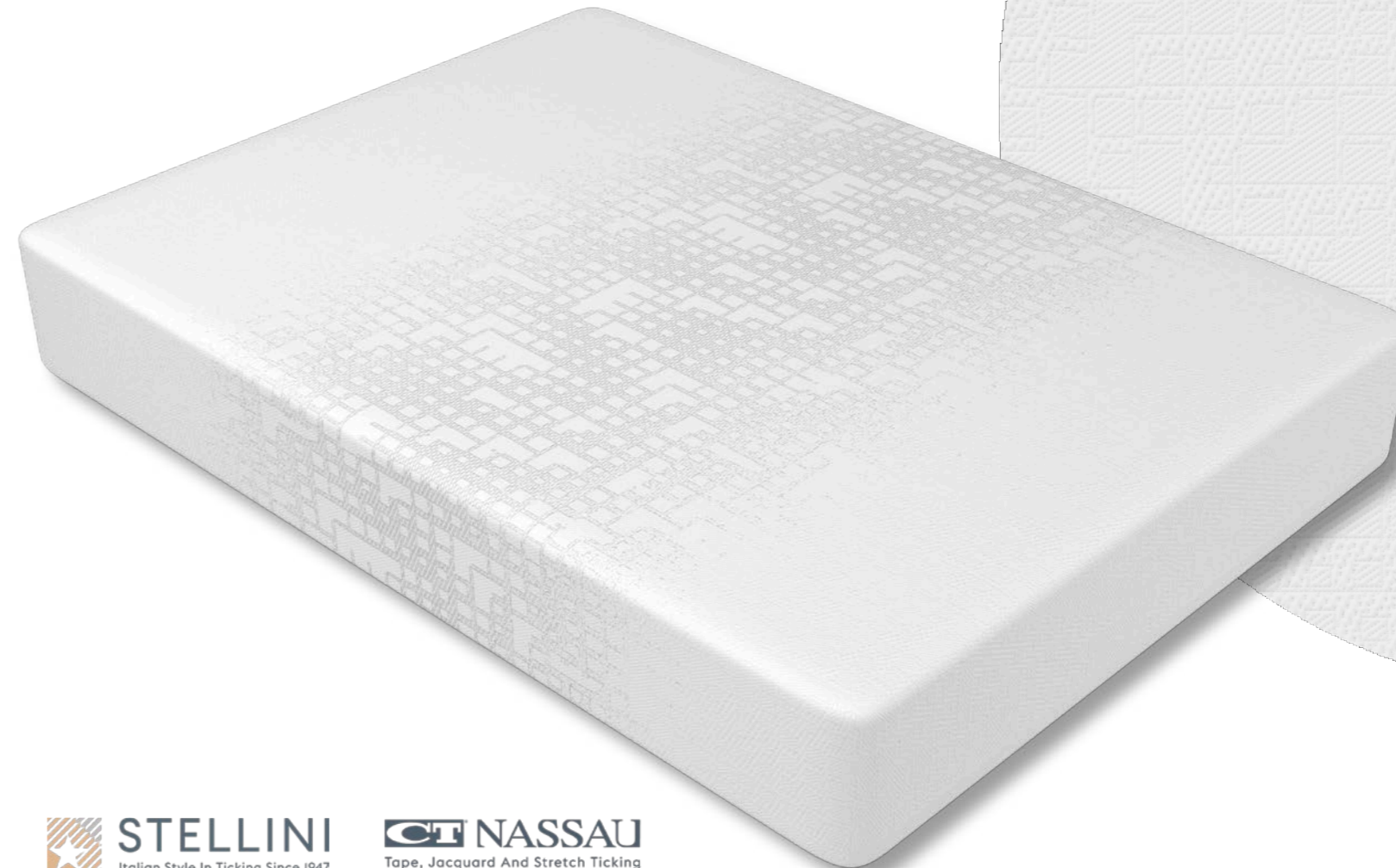
**STELLINI**  
Italian Style In Ticking Since 1947

**CT NASSAU**  
Tape, Jacquard And Stretch Ticking

MATRESS PANEL - Me10388  
e4pes350b220-24-6



MATRESS PANEL - Ma10446  
pes180h220 -101-6





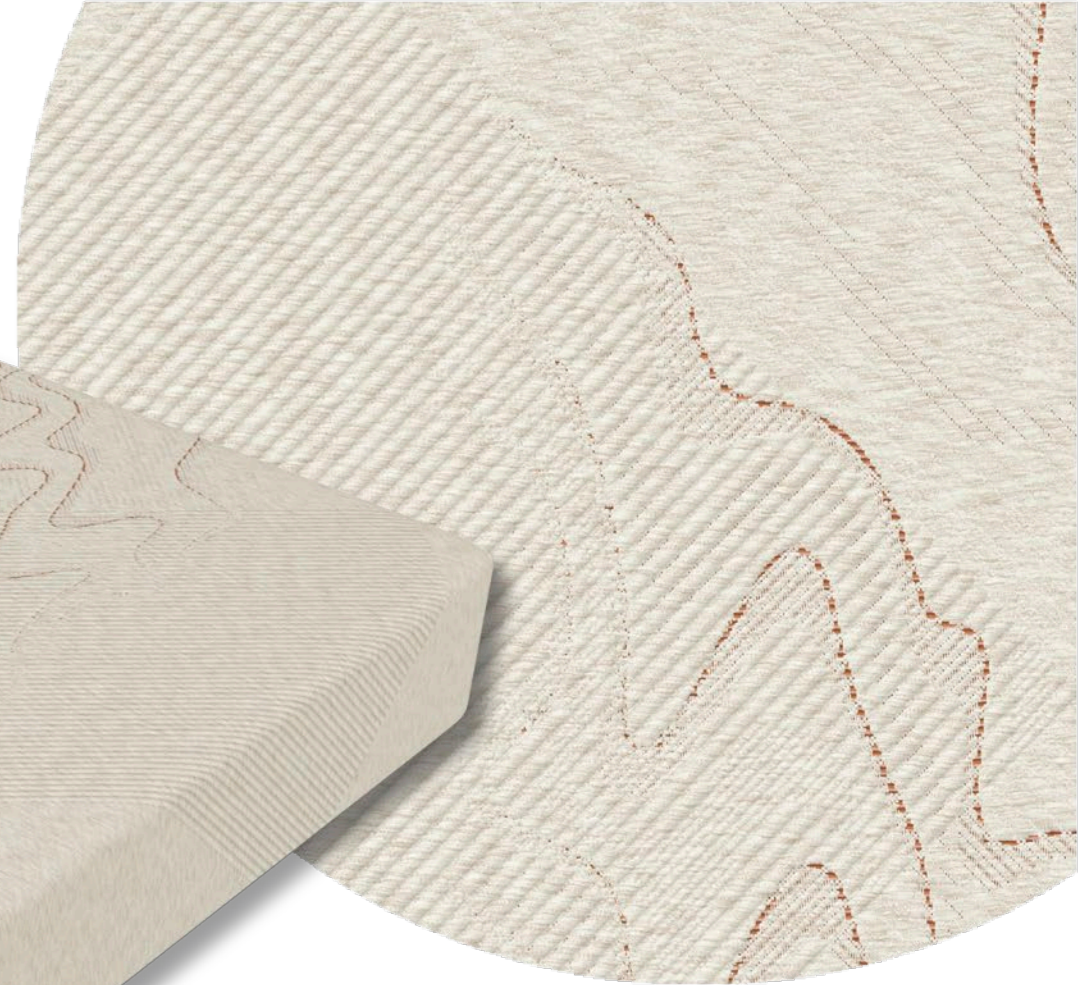
# The natural side

Qualities: Vyscose, Cotton, wool and Lyocell combined in soft fabrics for the perfect cozy home.

DISCOVER  
MORE HERE:



MATRESS PANEL - Ma10405  
pvl240b230 - 18-5



ALSO  
AVAILABLE IN:  42-6



# Cooling Fabrics

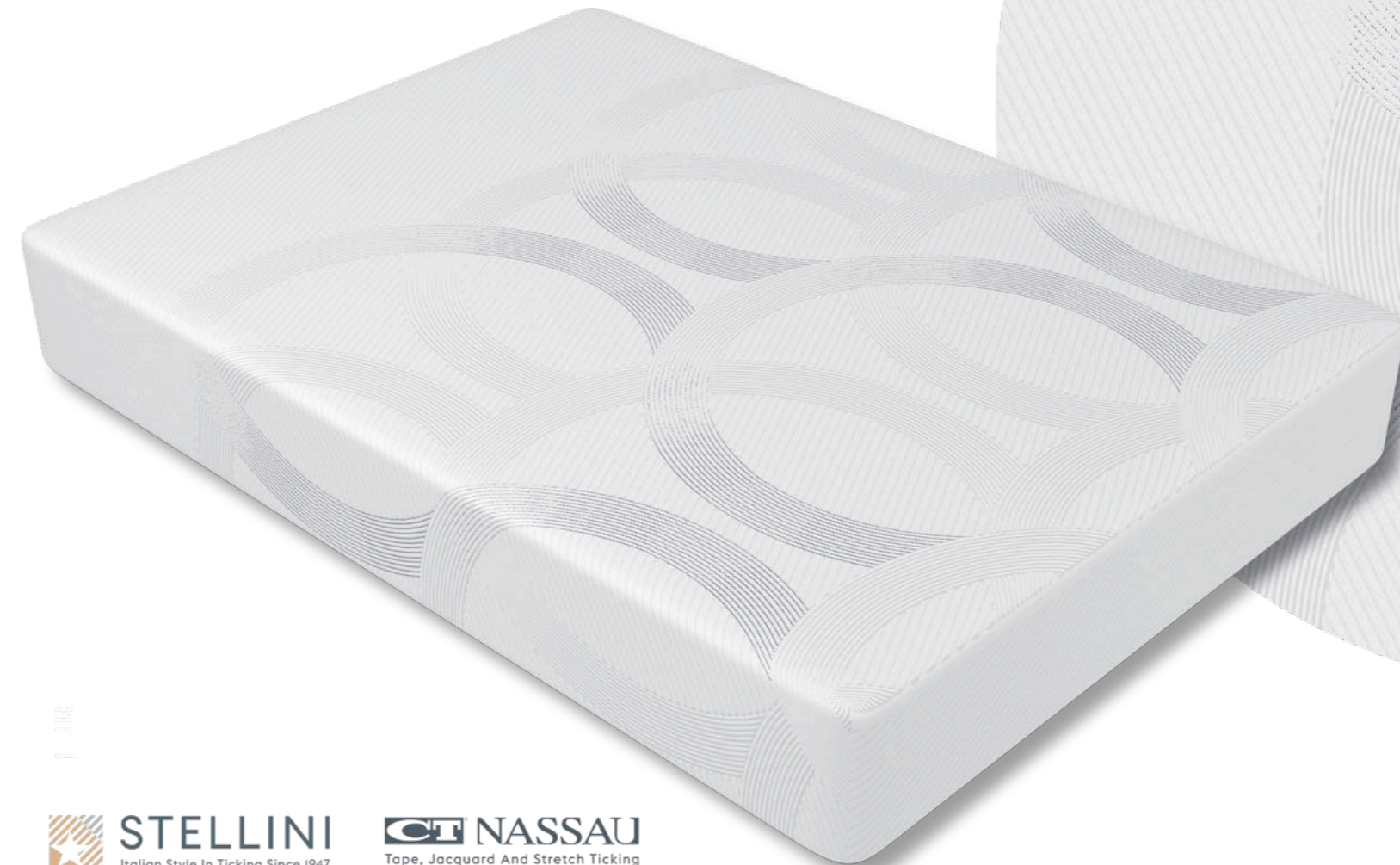
**FRECC! TOCCO RINFRESCANTE**

**DISCOVER  
MORE HERE:**



STELLINI  
**Frecc!**

MATRESS PANEL - Ma10390  
tempel350b230-9-1



 **STELLINI**  
Italian Style In Ticking Since 1947

 **NASSAU**  
Tape, Jacquard And Stretch Ticking

STELLINI  
**Frecc!**



X



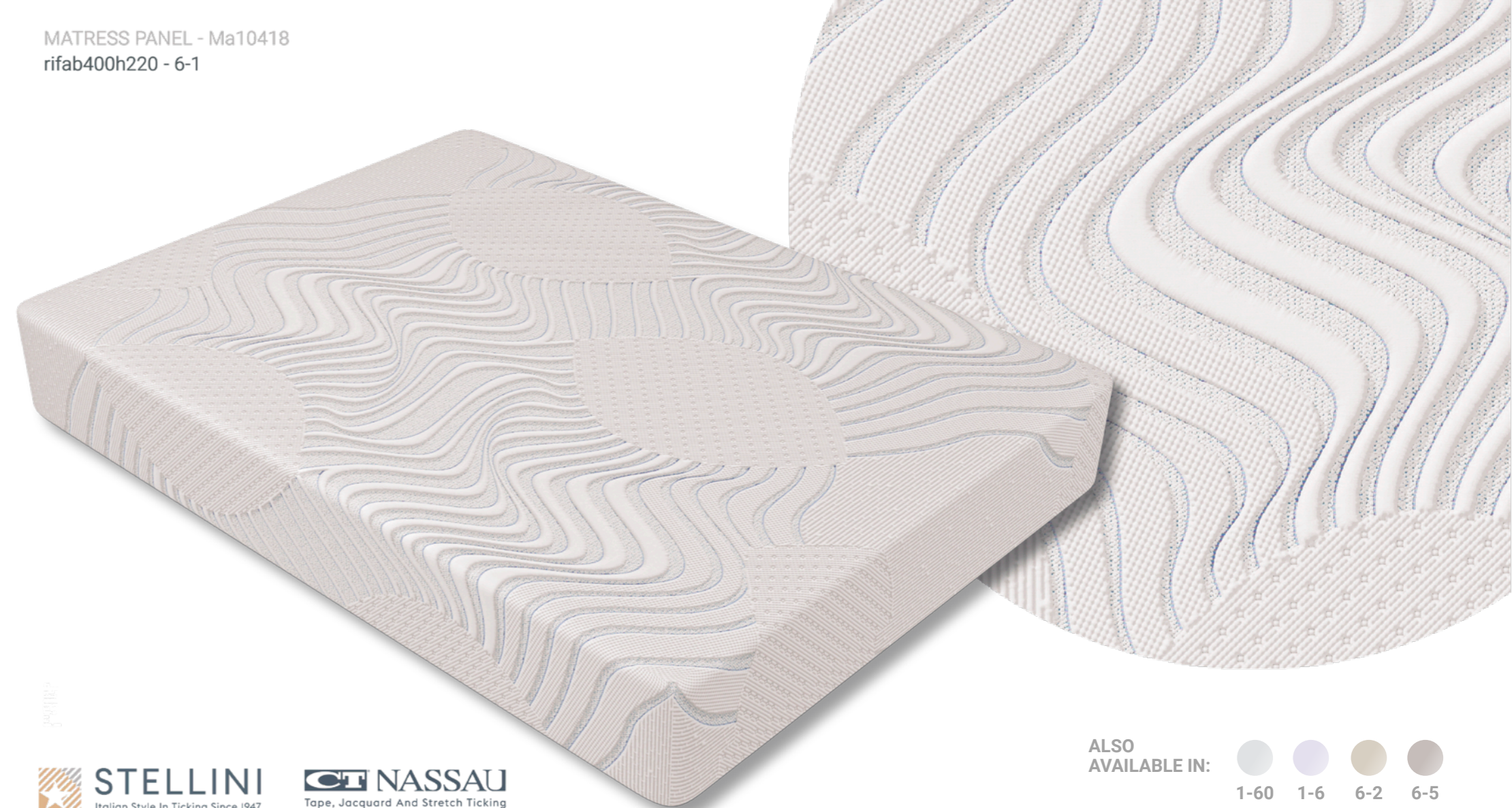
**REFIBRA™**  
technology

In the emerging circular economy of the future, nothing is treated as waste. What is left over from one process becomes input to another, so keeping it circulating. REFIBRA™ technology gives a second life to pre- and post-consumer sources - which would otherwise be sent to landfills or incinerated - by upcycling it into brand new cellulosic fiber materials for clothing and home products.

**DISCOVER  
MORE HERE:**



MATRESS PANEL - Ma10418  
rifab400h220 - 6-1



STELLINI

**STELLINI**  
Italian Style In Ticking Since 1947

**CT NASSAU**  
Tape, Jacquard And Stretch Ticking

ALSO  
AVAILABLE IN:



# DISCOVER THE REST OF THE CATALOGUE

CONTACT US FOR  
MORE INFORMATION

## CONTACTS

Europe | Italy | Fabric  
Stellini Textile Srl  
T +39 0331 072501  
info@stellinigroup.com

USA  
Continental Ticking  
Corporation of America  
T +1 336 570 0091  
salesmgt@ctnassau.com

Europe | Italy | Yarn  
Stellini Tech Srl  
T +39 0331 072501  
info@stellinigroup.com

Russia  
Stellini.RU  
Outside RU: T +7 4932 57 48 24  
Inside RU: T 8 800 550 19 47  
infoweb@stellinigroup.ru

[stellinigroup.com](http://stellinigroup.com)

